

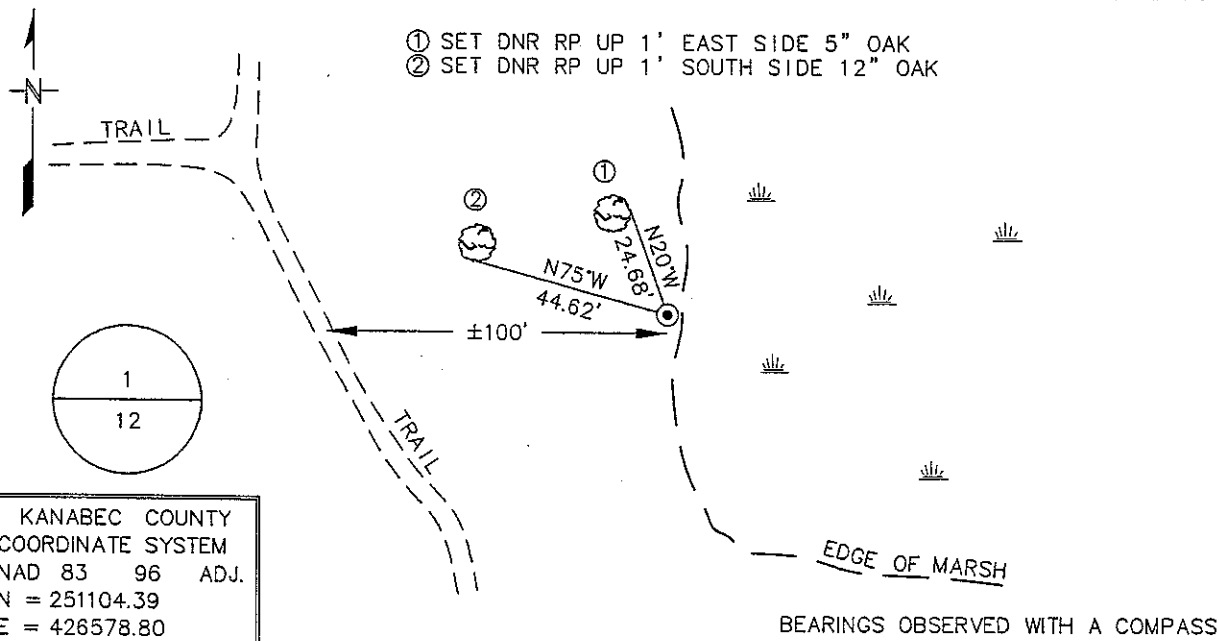
Index No. E-23

# CERTIFICATE OF LOCATION OF GOVERNMENT CORNER

NORTH QUARTER Corner of Section 12, Township 42 N, Range 23 W  
4TH Principal Meridian, State of Minnesota, County of KANABEC

At the corner location shown on the sketch:

- On \_\_\_\_\_ found a \_\_\_\_\_  
DATE \_\_\_\_\_
- left monument as found,  lowered monument,  removed monument (explain)
- On 8/5/04 Placed a 1" IRON PIPE UP 1' @ EDGE OF MARSH WITH SIGN POST  
DATE \_\_\_\_\_  
AS WITNESS, +/- 100' EAST OF CENTERLINE TRAIL



KANABEC COUNTY  
COORDINATE SYSTEM  
NAD 83 96 ADJ.  
N = 251104.39  
E = 426578.80

BEARINGS OBSERVED WITH A COMPASS

Statement of evidence for this corner location is on back of this page. NOVEMBER 2005 SFT00056

I certify that this document was researched and prepared by me or under my direct supervision.

SIGNATURE John D. Walker DATE 12/03/09 License Number 16098

Title:  Land Surveyor  Professional Engineer  County Surveyor  County Engineer

**North Quarter Corner Section 12, Township 42 North, Range 23 West**

The Department of Natural Resources, Division of Lands and Minerals, contacted the following offices for information regarding this corner:

MN Secretary of State  
Kanabec County Surveyor  
Kanabec County Recorder's Office  
Kanabec County Engineer's Office  
E.G. Rud & Sons, Inc.

1851 The US General Land Office field notes, on file in the Secretary of State's Office, show this corner to be marked with a post and the following bearing trees were marked:

Tamarack 6" N45°E 10 links (6.6')  
Tamarack 8" S50°W 11 links (7.26')

2003 LLS Ernie Rud subdivision of Section 12 set a spike for the northwest corner and established the northeast corner by bearing and distance from the spike. No mention of the north quarter corner.

2004 In August the DNR survey crew searched for evidence of the corner and found nothing. The survey crew found the spike set by Rud at the northwest corner of Section 12. Using the information from the Rud subdivision a 1" x 60" iron pipe was set at the lost position. The iron pipe fell at the west edge of a marsh and ties were taken.

Northeast Corner Section 12 bears S 88°03'34" E 2621.01'  
Northeast Corner Section 11 bears N 88°03'34" W 2621.01'

For more information on our survey in this area, please contact MN DNR, Division of Lands and Minerals, Survey Section, 1601 Minnesota Drive, Brainerd, MN 56401