

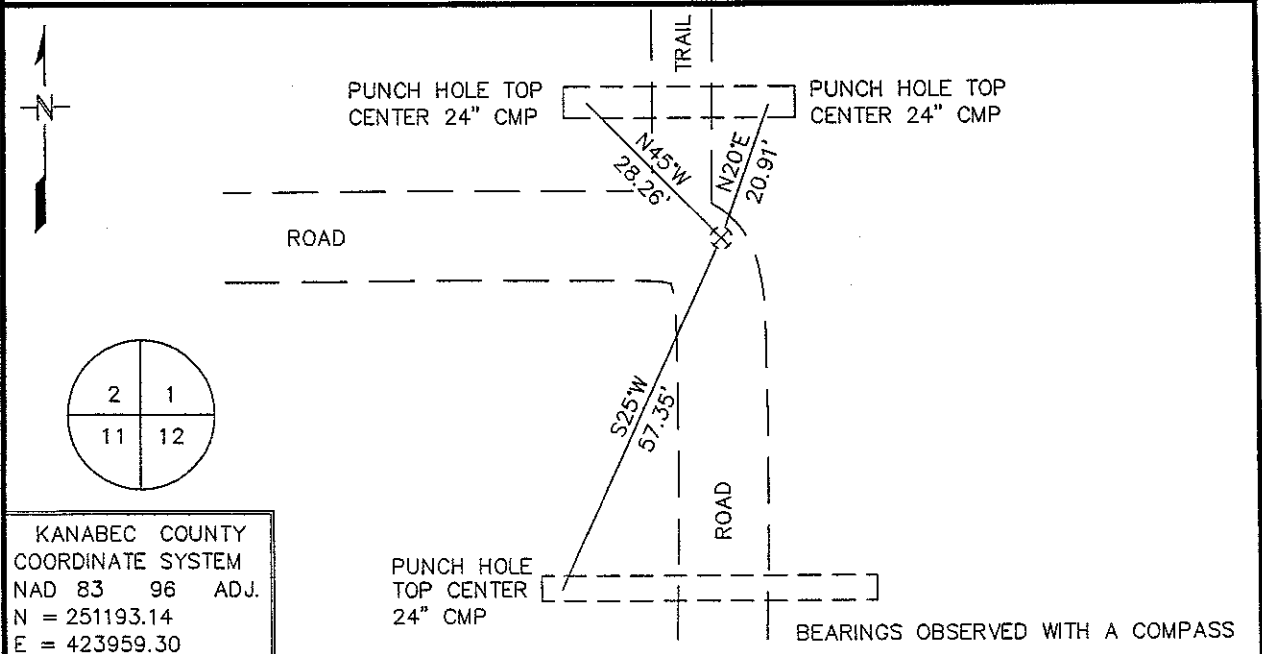
Index No. E-21

# CERTIFICATE OF LOCATION OF GOVERNMENT CORNER

NORTHEAST Corner of Section 11, Township 42 N, Range 23 W  
4TH Principal Meridian, State of Minnesota, County of KANABEC

At the corner location shown on the sketch:

- On 8/5/04 found a BRIDGE SPIKE AT THE INTERSECTION OF  
DATE  
ROADS WEST & SOUTH
- left monument as found,     lowered monument,     removed monument (explain)
- On \_\_\_\_\_ Placed a \_\_\_\_\_  
DATE



KANABEC COUNTY  
 COORDINATE SYSTEM  
 NAD 83 96 ADJ.  
 N = 251193.14  
 E = 423959.30

Statement of evidence for this corner location is on back of this page.

NOVEMBER 2005  
 SFT00056

I certify that this document was researched and prepared by me or under my direct supervision.

SIGNATURE John D. Walker    DATE 12/3/09    License Number 16098

Title:     Land Surveyor     Professional Engineer     County Surveyor     County Engineer

**Northeast Corner Section 11, Township 42 North, Range 23 West**

The Department of Natural Resources, Division of Lands and Minerals, contacted the following offices for information regarding this corner:

MN Secretary of State  
Kanabec County Surveyor  
Kanabec County Recorder's Office  
Kanabec County Engineer's Office  
E.G. Rud & Sons, Inc., Land Surveyors

1851 The US General Land Office field notes, on file in the Secretary of State's Office, show this corner to be marked with a post and the following bearing trees were marked:

Oak 12" N20°E 7 links (4.62')  
Sugar 8" S60W 12 links (7.92')

2003 LLS Ernie Rud subdivision of Section 12 set a spike for the corner at the intersection of centerline roads, west and south.

1908 For a road survey, Surveyor Vickory, measured 80 chains (5280') along the east line of the section. He found a US witness tree and set a stone monument.

2004 In August the DNR survey crew found a bridge spike at the intersection of roads set by Rud. The monument was left as found and accepted as marking the obliterated location for the corner and ties were taken.

North Quarter Corner Section 12 bears S 88°03'34" E 2621.01'  
East Quarter Corner Section 11 bears S 02°10'40" W 2634.59'

For more information on our survey in this area, please contact MN DNR, Division of Lands and Minerals, Survey Section, 1601 Minnesota Drive, Brainerd, MN 56401