

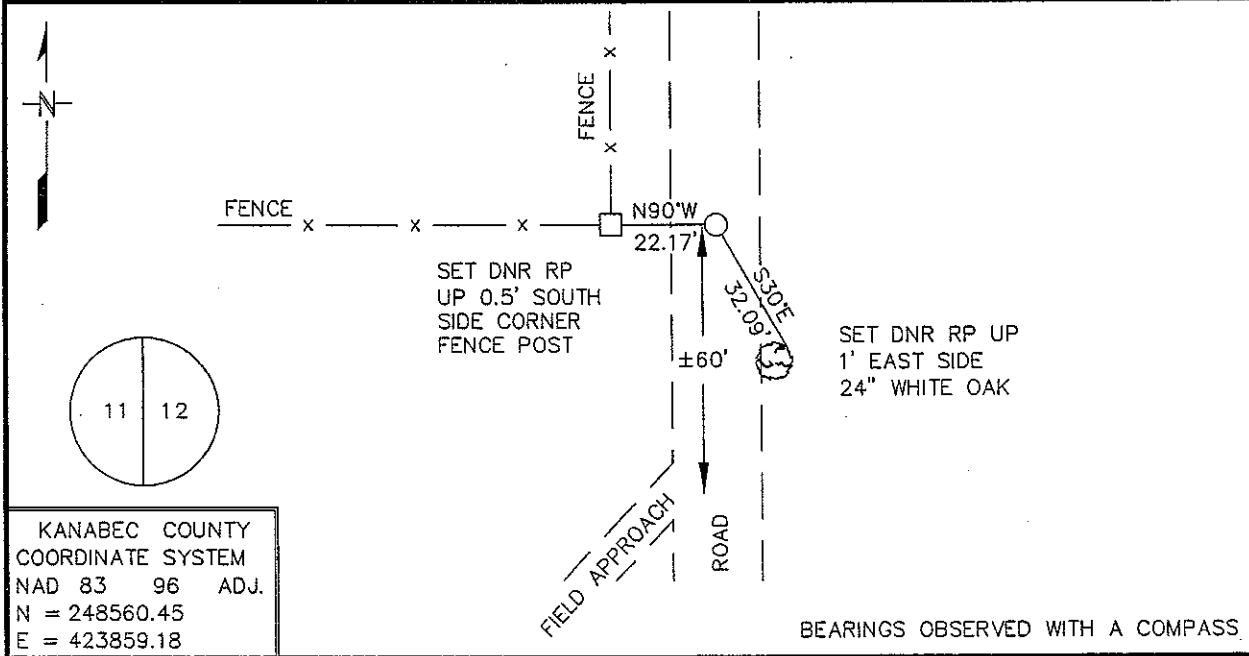
Index No. G-21

# CERTIFICATE OF LOCATION OF GOVERNMENT CORNER

EAST QUARTER Corner of Section 11, Township 42 N, Range 23 W  
4TH Principal Meridian, State of Minnesota, County of KANABEC

At the corner location shown on the sketch:

- On \_\_\_\_\_ found a \_\_\_\_\_  
DATE
- left monument as found,     lowered monument,     removed monument (explain)
- On 8/5/04 Placed a 3/4" IRON ROD WITH SURVEY CAP AT THE INTERSECTION  
DATE  
OF CENTERLINE ROAD AT FENCE WEST



KANABEC COUNTY  
COORDINATE SYSTEM  
NAD 83 96 ADJ.  
N = 248560.45  
E = 423859.18

BEARINGS OBSERVED WITH A COMPASS

Statement of evidence for this corner location is on back of this page.

NOVEMBER 2005  
SFT00056

I certify that this document was researched and prepared by me or under my direct supervision.

SIGNATURE Julia D. Walker DATE 12/03/09 License Number 16098

Title:  Land Surveyor     Professional Engineer     County Surveyor     County Engineer

**East Quarter Corner Section 11, Township 42 North, Range 23 West**

The Department of Natural Resources, Division of Lands and Minerals, contacted the following offices for information regarding this corner:

MN Secretary of State  
 Kanabec County Surveyor  
 Kanabec County Recorder's Office  
 Kanabec County Engineer's Office  
 E.G. Rud & Sons, Inc.

1851 The US General Land Office field notes, on file in the Secretary of State's Office, show this corner to be marked with a post and the following bearing trees were marked:

Balsam 8" N65°W 7 links (4.62')  
 Linden 6" N65°E 21 links (13.86')

1908 For a road survey, Surveyor Vickory, measured 80 chains (5280') along the east line of the section. There was no mention of anything found or set for the quarter corner.

19?? LLS Ernie Rud subdivision of Section 12 lists the southeast corner as an iron pipe at the intersection of centerline roads. The northeast corner is a spike set at the intersection of centerline roads. A position is computed for the location of the corner but no mention if anything is set or found. The position falls at the intersection of the centerline road and fence line.

2004 In August the DNR survey crew found the northeast and southeast corners of the section as listed per the Rud survey. They searched for a monument at the east quarter corner but could not find anything. The survey crew set a 3/4" iron rod at Rud's computed position. The iron rod fell in the centerline road at the intersection with a fence west. The iron rod was accepted as marking the obliterated location for the corner and ties were taken. This location is 13.42 feet west and 1.75 feet south of the lost location.

Northeast Corner Section 11 bears N 02°10'40" E 2634.59'  
 Northeast Corner Section 14 bears S 01°35'46" W 2631.07'

For more information on our survey in this area, please contact MN DNR, Division of Lands and Minerals, Survey Section, 1601 Minnesota Drive, Brainerd, MN 56401