

4223037
4223057

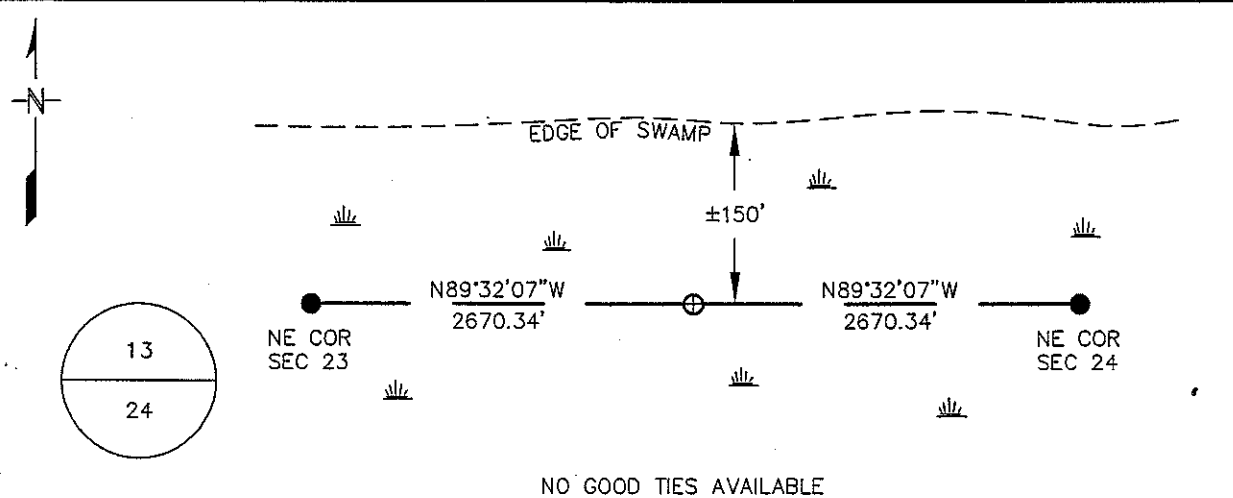
Index No. N-23

CERTIFICATE OF LOCATION OF GOVERNMENT CORNER

NORTH QUARTER Corner of Section 24, Township 42 N, Range 23 W
4TH Principal Meridian, State of Minnesota, County of KANABEC

At the corner location shown on the sketch:

- On _____ found a _____
DATE
- left monument as found, lowered monument, removed monument (explain)
- On 4/4/05 Placed a 1 1/4" X 5' IRON PIPE WITH SURVEY CAP IN SWAMP
DATE
+/- 150' SOUTH OF EDGE OF SWAMP



NO GOOD TIES AVAILABLE

KANABEC COUNTY
COORDINATE SYSTEM
NAD 83 96 ADJ.
N = 240479.90
E = 426430.87

BEARINGS ARE KANABEC COUNTY NAD 83, 96 ADJUSTMENT ORIENTATION

Statement of evidence for this corner location is on back of this page.

OCTOBER 2005
SFT00056

I certify that this document was researched and prepared by me or under my direct supervision.

SIGNATURE [Signature] DATE 12/4/09 License Number 16098

Title: Land Surveyor Professional Engineer County Surveyor County Engineer

North Quarter Corner Section 24, Township 42 North, Range 23 West

The Department of Natural Resources, Division of Lands and Minerals, contacted the following offices for information regarding this corner:

MN Secretary of State
Kanabec County Surveyor
Kanabec County Recorder's Office
Kanabec County Engineer's Office
E.G. Rud & Sons, Inc., Land Surveyors

- 1851 The US General Land Office field notes, on file in the Secretary of State's Office, show this corner to be marked with a post and the following bearing trees were marked:

Pine 24" N 41° E 22 links (14.52')

Pine 20" S 28° E 10 links (6.6')

GLO also had a 16" pine line tree 0.8 chains (52.8') west of the corner. GLO measured 80 chains (5280') across the north line of the section.

- 2004 LLS Ernie Rud certified the northwest and northeast corners of Section 24 and listed coordinates for the positions.

- 2005 In April the DNR survey crew searched for evidence of the corner and found nothing. A lost position for the corner was calculated using Rud's coordinates and a 1 1/4" iron pipe with survey cap was set in a swamp. No good ties were available. There is a large swamp about 1100' wide that wasn't located in the GLO survey. This line may not have been run.

Northeast Corner Section 23 bears N89°32'07"W 2670.34'

Northeast Corner Section 24 bears S89°32'07"E 2670.34'

For more information on our survey in this area, please contact MN DNR, Division of Lands and Minerals, Survey Section, 1601 Minnesota Drive, Brainerd, MN 56401