

# CERTIFICATE OF LOCATION OF GOVERNMENT CORNER

Northeast Corner of Section 35, Township 42, Range 23, 4th P.M.  
STATE OF MINNESOTA, County of KANABEC

At the corner location shown on the sketch:

*Set a # 7 rebar with aluminium cap 24" long on March 11, 2004.*

Kanabec County U.S. Survey Feet Coordinates  
NAD 1983, HARN 1996 Adjustment  
Obtained by RTK GPS Observation

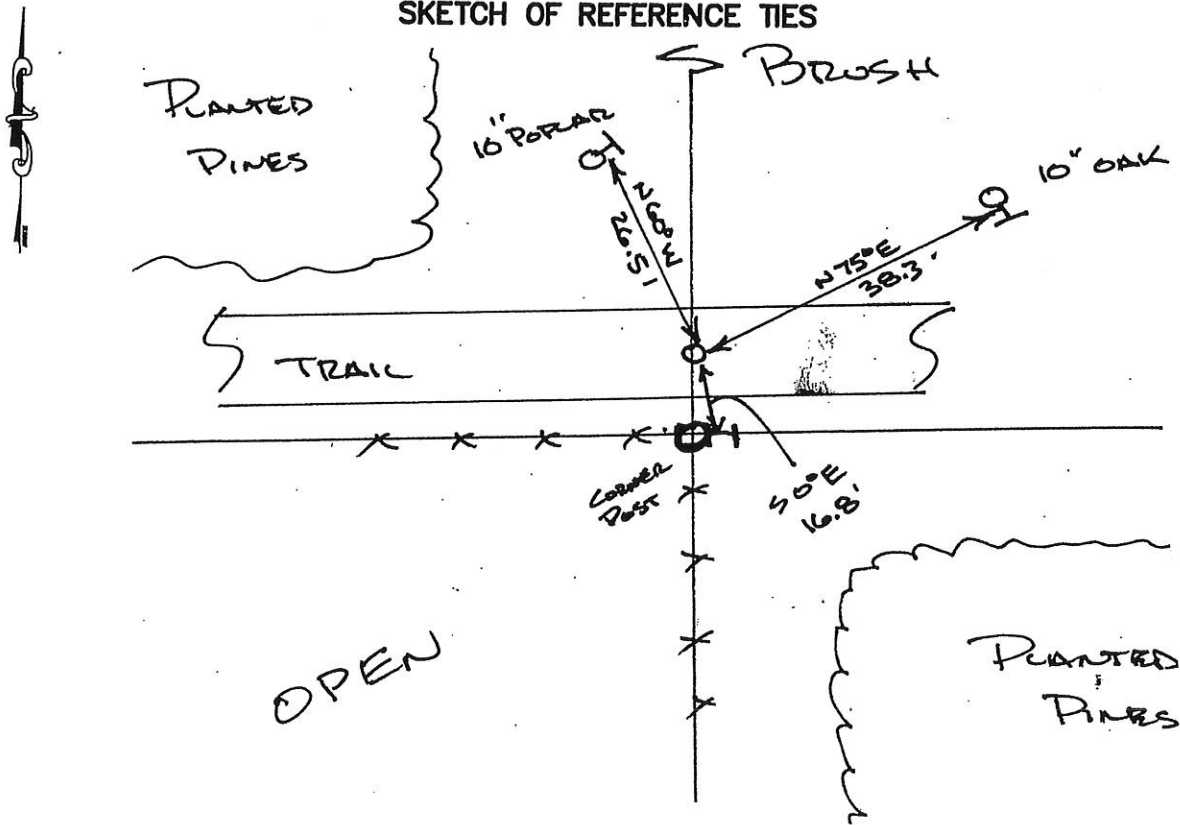
Northing= 230021.37

Easting= 423566.72

Note: NAD 1983, HARN 1996 Adjustment coordinates are NOT compatible with NAD 1983 coordinates

Note: 1 Meter=3937/1200 U.S. Survey Feet

### SKETCH OF REFERENCE TIES



Statement of evidence relative to this corner location is on back of page.

I hereby certify that this document and the data contained herein was prepared by me or under my direct supervision.

Ernest L. Rud  
Signature

May 1, 2014  
Date

### OFFICE OF THE COUNTY RECORDER

County of \_\_\_\_\_

I hereby certify that this document was filed in the County Recorder's office at \_\_\_\_\_ M. on the \_\_\_\_\_ day of \_\_\_\_\_ A.D., 20\_\_\_\_

County Recorder \_\_\_\_\_

BY \_\_\_\_\_ Deputy

DOCUMENT NO. \_\_\_\_\_

Registration No. 9808

Land Surveyor,       Professional Engineer

County Surveyor,       County Engineer

The original Government post was set by Deputy Surveyor John M. Gley on October 18, 1851 and 2 bearing trees noted as being;

10" Birch bearing North 33° East at 26Links

8" Birch bearing North 5° West at 7 Links

No evidence for the post or bearing trees could be found. There is a road opening on file at Kanabec County Auditor's Office showing a road opening along northwest quarter of Section 35 but not passing through the northeast quarter.

This falls on the centerline of an old road bed running east and west and a good fence running south.

On March 7, 1925 George Jenks filed a Certificate of Location on page 18 of the County ties book. He stated he set a stone with an X on it and noted 2blazing pine snags at northeast at 25 feet and southwest at 82 feet. Pine snags are gone now. A hand excavation was done at this location but no evidence was found. Water was too high to bring in backhoe. We considered the centerline of the old road bed and extension of the fence line south to be the best location of the perpetuation of the corner. On March 11, 2004 A #7 rebar 24" long with an aluminum cap was set, ties taken and Kanabec County Coordinates established on this position.