

CERTIFICATE OF LOCATION OF GOVERNMENT CORNER

E 1/4 Corner of Section 35, Township 42, Range 23, 4TH P.M.

STATE OF MINNESOTA, County of KANABEC

At the corner location shown on the sketch:

Set a #7 rebar with Kanabec County Aluminum Cap

Kanabec County U.S. Survey Feet Coordinates
NAD 1983, HARN 1996 Adjustment
Obtained by RTK GPS Observation

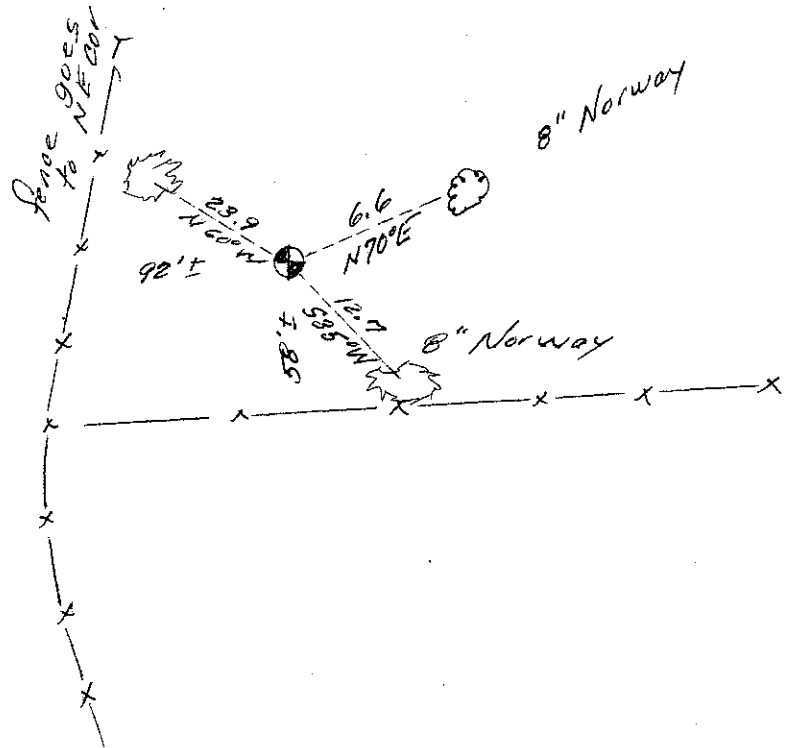
Northing= 227388.64

Easting= 423527.87

Note: NAD 1983, HARN 1996 Adjustment coordinates are NOT compatible with NAD 1983 coordinates

Note: 1 Meter=3937/1200 U.S. Survey Feet

SKETCH OF REFERENCE TIES



Statement of evidence relative to this corner location is on back of page.

I hereby certify that this document and the data contained herein was prepared by me or under my direct supervision.

Ernest J. Rud

Signature

Date

Registration No. Minn No. 9808

Land Surveyor, Professional Engineer

County Surveyor, County Engineer

OFFICE OF THE COUNTY RECORDER

County of _____

I hereby certify that this document was filed in the County Recorder's office at _____ M. on the

_____ day of _____ A.D., 20____

County Recorder _____

BY _____ Deputy

DOCUMENT NO. _____

STATEMENT OF EVIDENCE: EAST QUARTER 35-42-23 4223049

The original corner was set by Deputy Surveyor, John M. Gley on October 18, 1851 and 2 bearing trees noted as:

10 " Birch bearing North 33 degrees East 26 links
8" Birch bearing North 5 degrees West 7 links

No visible evidence was found for the corner or bearing trees.

No records of subsequent surveys could be found at Kanabec County Offices.

In February 2004, E.G. Rud & Sons ran a survey along this line and set a #7 rebar with an aluminum cap at a lost position. Helen Linder owns the East $\frac{1}{2}$ of Section 35 and East $\frac{1}{2}$ of the Southwest $\frac{1}{4}$ of Section 36. There is a fence 90 feet west and 60 feet south of this position. The westerly fence runs pretty straight to the Northeast corner of Section 35. However it takes a bend at the East $\frac{1}{4}$ corner and runs southerly and not in straight line to the Southeast corner. I talked to Helen but she couldn't remember the history of the fences. Therefore we treated this corner as lost and set according to B.L.M. practices. Kanabec County coordinates were assigned to this position.
