

CERTIFICATE OF LOCATION OF GOVERNMENT CORNER

NE
SE Corner of Section 2³⁵, Township 41⁴², Range 23, _____ P.M.

STATE OF MINNESOTA, County of KANABEC

At the corner location shown on the sketch:

*Actual corner falls in Snake River.
Set W.C. on East & South lines
of Sec 35*

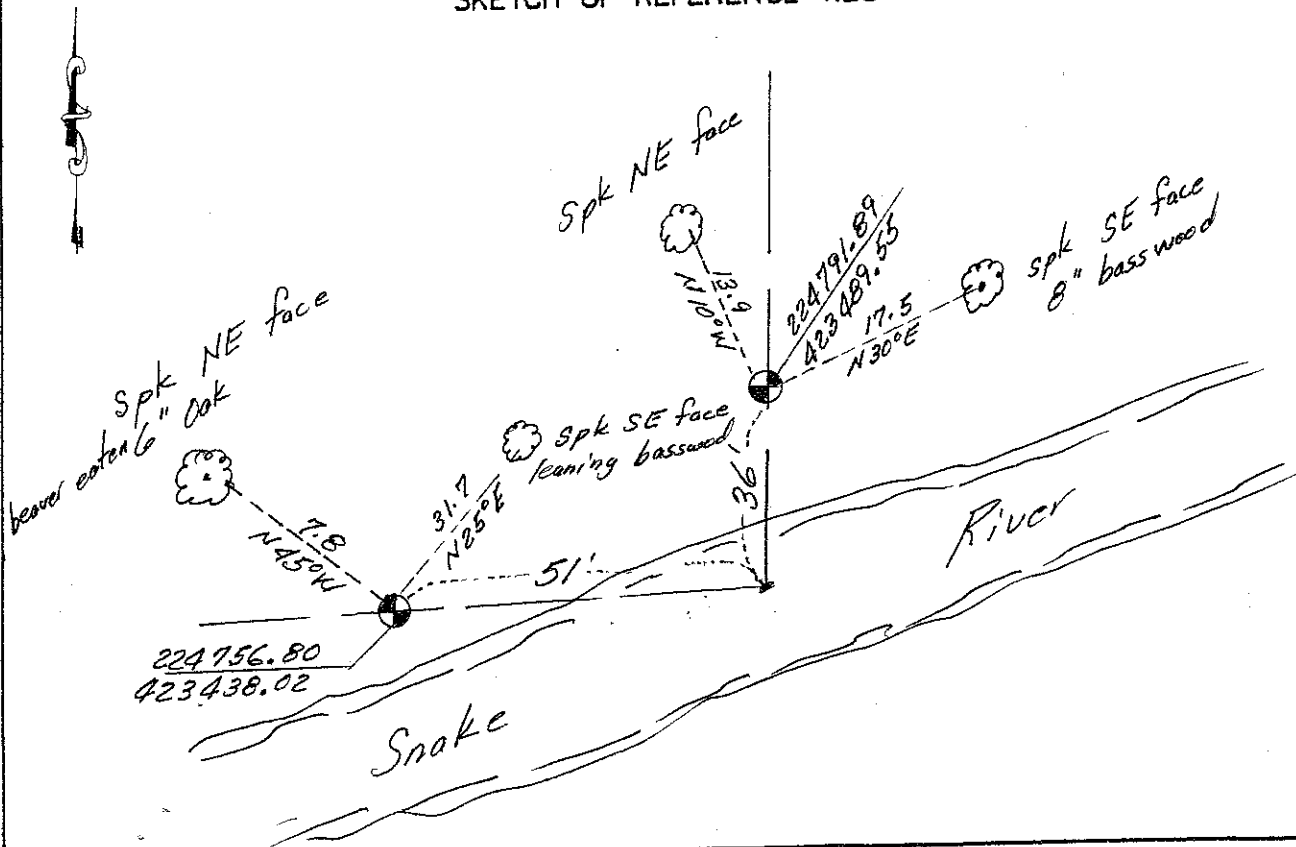
Kanabec County U.S. Survey Feet Coordinates
NAD 1983, HARN 1996 Adjustment
Obtained by RTK GPS Observation

Northing= 224755.90
Easting= 423489.01

Note: NAD 1983, HARN 1996 Adjustment
coordinates are NOT compatible with
NAD 1983 coordinates

Note: 1 Meter=3937/1200 U.S. Survey Feet

SKETCH OF REFERENCE TIES



Statement of evidence relative to this corner location is on back of page.

I hereby certify that this document and the data contained herein was prepared by me or under my direct supervision.

Ernest Lund
Signature

Date

Registration No. Minn No. 9808

- Land Surveyor, Professional Engineer
- County Surveyor, County Engineer

OFFICE OF THE COUNTY RECORDER

County of _____

I hereby certify that this document was filed in the County Recorder's office at _____ M. on the

_____ day of _____ A.D., 20____

County Recorder _____

BY _____ Deputy

DOCUMENT NO. _____

