

# CERTIFICATE OF LOCATION OF GOVERNMENT CORNER

N 1/4  
S 1/4 Corner of Section 2 35, Township 41 42, Range 23 23, 4 P.M.

STATE OF MINNESOTA, County of KANABEC

At the corner location shown on the sketch:

*Found Cast Iron Monument  
set by Norm Hoium in platting  
of Linders Addition*

Kanabec County U.S. Survey Feet Coordinates  
NAD 1983, HARN 1996 Adjustment  
Obtained by RTK GPS Observation

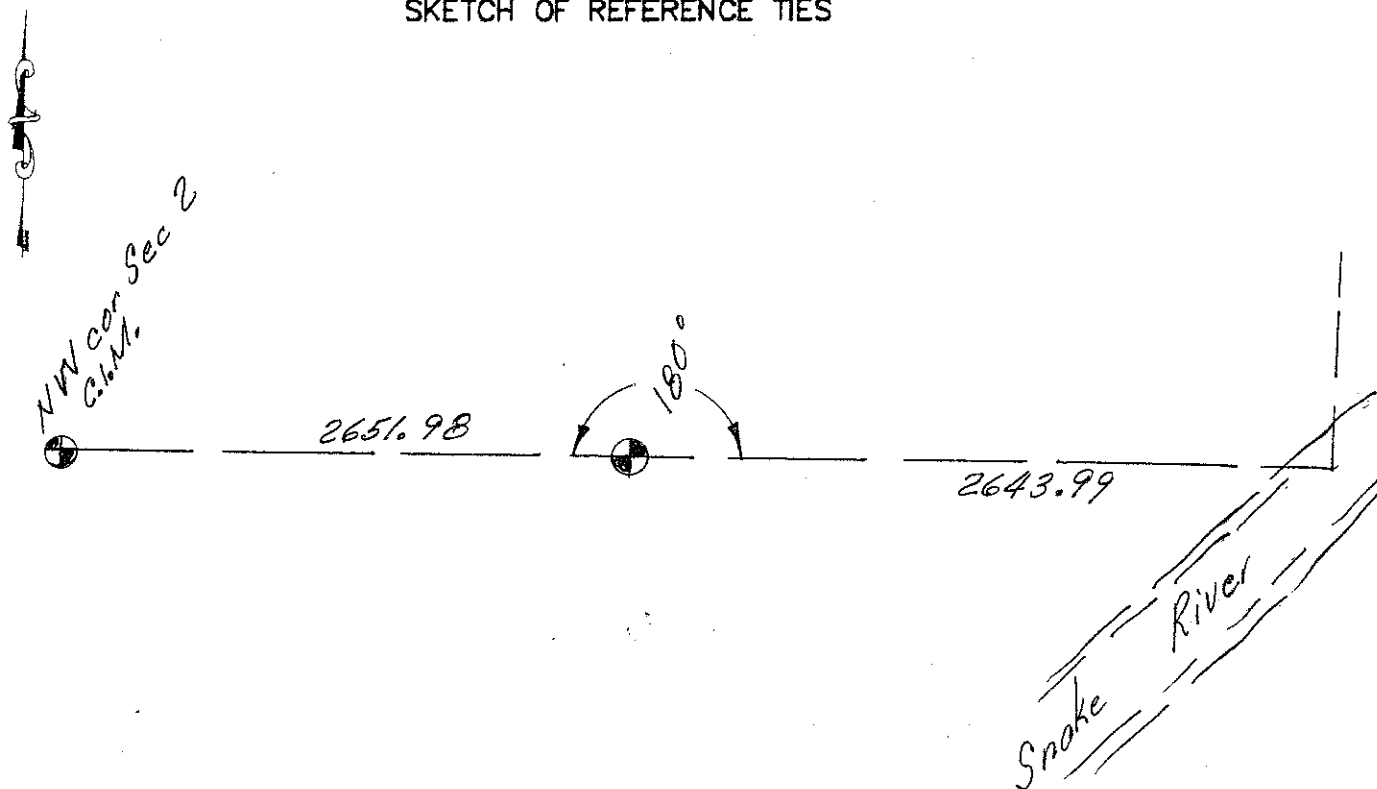
Northing= 224802.55

Easting= 420845.43

Note: NAD 1983, HARN 1996 Adjustment  
coordinates are NOT compatible with  
NAD 1983 coordinates

Note: 1 Meter=3937/1200 U.S. Survey Feet

## SKETCH OF REFERENCE TIES



Statement of evidence relative to this corner location is on back of page.

I hereby certify that this document and the data contained herein was prepared by me or under my direct supervision.

Ernest L. Rud  
Signature

11-19-12  
Date

Registration No. Minn No. 9808

Land Surveyor,  Professional Engineer

County Surveyor,  County Engineer

## OFFICE OF THE COUNTY RECORDER

County of \_\_\_\_\_

I hereby certify that this document was filed in the County Recorder's office at \_\_\_\_\_ M. on the

\_\_\_\_\_ day of \_\_\_\_\_ A.D., 20\_\_

County Recorder \_\_\_\_\_

BY \_\_\_\_\_ Deputy

DOCUMENT NO. \_\_\_\_\_

STATEMENT OF EVIDENCE: SOUTH QUARTER 35-42-23 4223046  
NORTH QUARTER 2-41-42 4123016

This corner was set by Deputy Surveyor, James Freeman, on October 9, 1851 and 2 bearing trees noted as:

9" Spruce bearing South 36 degrees West at 13 links  
12" Elm bearing North 29 degrees at 20 links

No visible evidence was found for corners or bearing trees.

In 1970 Norm Hoium set a C.I.M. at this corner in the plat of Linders Addition.

In 2002 E.G. Rud & Sons located this corner and established Kanabec County coordinates on this position.