

CERTIFICATE OF LOCATION OF GOVERNMENT CORNER

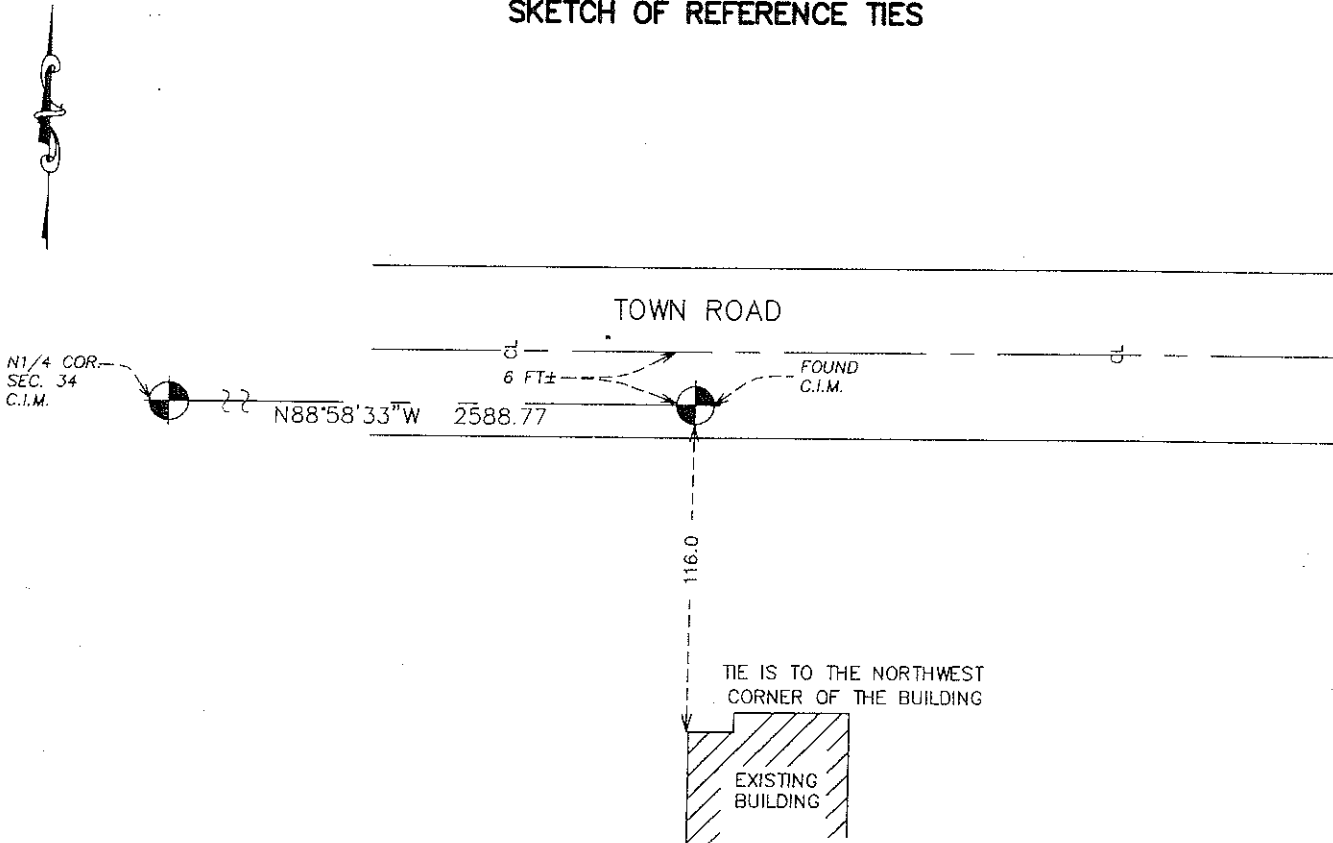
SOUTHEAST Corner of Section 34, Township 42, Range 23, 4TH P.M.

STATE OF MINNESOTA, County of KANABEC

At the corner location shown on the sketch:
FOUND A CAST IRON MONUMENT

Kanabec County U.S. Survey Feet Coordinates
 NAD 1983, HARN 1996 Adjustment
 Obtained by RTK GPS Observation
 Northing= 224849.35
 Easting= 418193.86
 Note: NAD 1983, HARN 1996 Adjustment
 coordinates are NOT compatible with
 NAD 1983 coordinates
 Note: 1 Meter=3937/1200 U.S. Survey Feet

SKETCH OF REFERENCE TIES



Statement of evidence relative to this corner location is on back of page.

I hereby certify that this document and the data contained herein was prepared by me or under my direct supervision.

Ernest J. Blud
 Signature

2-07-2008
 Date

Registration No. 9808

- Land Surveyor, Professional Engineer
 County Surveyor, County Engineer

OFFICE OF THE COUNTY RECORDER

County of _____

I hereby certify that this document was filed in the County Recorder's office at _____ M. on the _____ day of _____ A.D., 20____

County Recorder _____

BY _____ Deputy

DOCUMENT NO. _____

SOUTHEAST CORNER SECTION 34, TOWNSHIP 42, RANGE 23

STATEMENT OF EVIDENCE

THE ORIGINAL CORNER WAS SET BY DEPUTY SURVEYOR JOHN M. GIAY ON OCTOBER 7, 1851 AND 4 BEARING TREES WERE ESTABLISHED. NO RECORDS OF SUBSEQUENT SURVEYS COULD BE FOUND AT THE KANABEC COUNTY OFFICES.

(1967)

IN 1967 THE PLAT OF LINDERS ADDITION WAS PLATTED AND A 1/2 INCH IRON PIPE SET AT THIS CORNER.

(1970)

IN JUNE 1970 NORM HOIUM REPLACED THE 1/2 INCH IRON PIPE WITH A CAST IRON MONUMENT.

(2002)

IN 2002 E.G. RUD & SONS, INC. LOCATED THIS CAST IRON MONUMENT AND KANABEC COUNTY COORDINATES WERE ESTABLISHED ON THIS POSITION USING GLOBAL POSITIONING SYSTEM (G.P.S.) EQUIPMENT.