

4223044

Index No. ~~4123012~~

CERTIFICATE OF LOCATION OF GOVERNMENT CORNER

3/4

34

42

23

NORTH QUARTER Corner of Section 03, Township 41, Range 23, 4TH P.M.

STATE OF MINNESOTA, County of KANABEC

At the corner location shown on the sketch:

FOUND THIS MONUMENT
AND ESTABLISHED KANABEC COUNTY COORDINATES ON ITS LOCATION.

Kanabec County U.S. Survey Feet Coordinates
NAD 1983, HARN 1996 Adjustment
Obtained by RTK GPS Observation

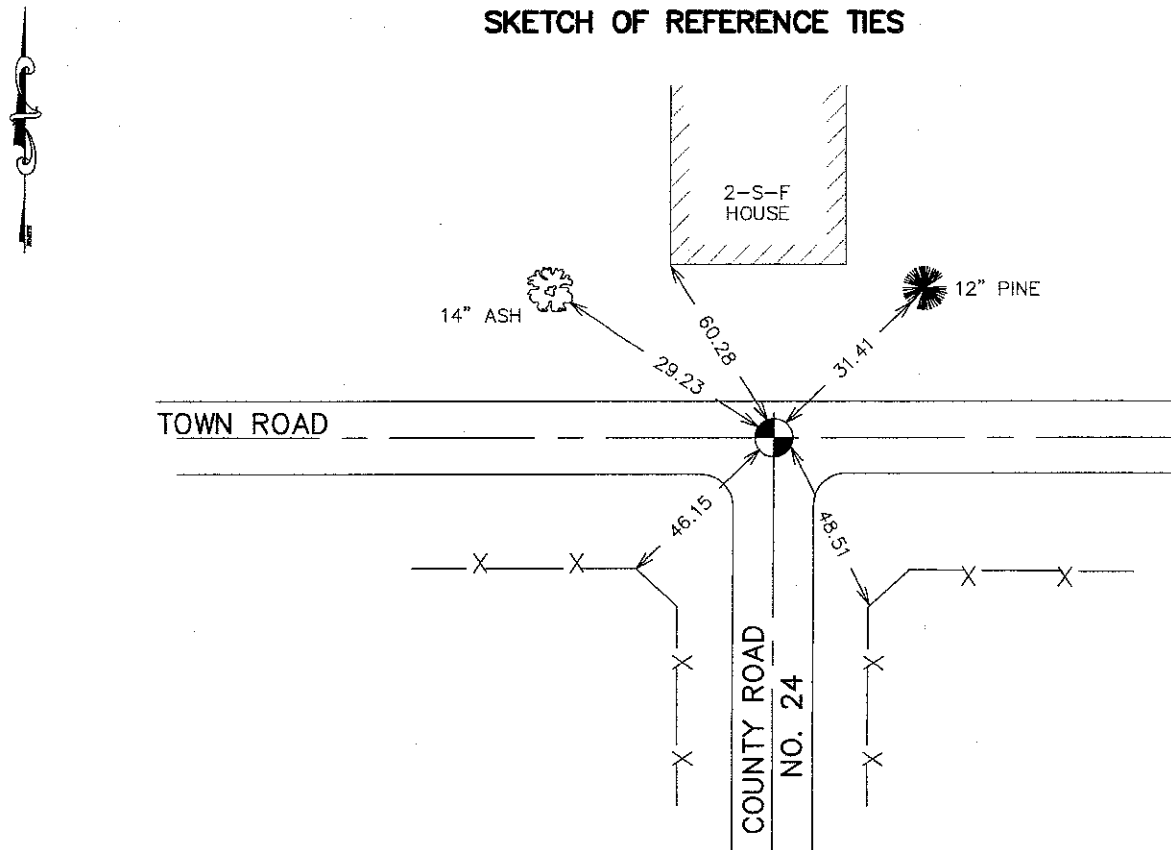
Northing= 224895.62

Easting= 415605.50

Note: NAD 1983, HARN 1996 Adjustment
coordinates are NOT compatible with
NAD 1983 coordinates

Note: 1 Meter=3937/1200 U.S. Survey Feet

SKETCH OF REFERENCE TIES



Statement of evidence relative to this corner location is on back of page.

I hereby certify that this document and the data contained herein was prepared by me or under my direct supervision.

Ernest J. [Signature]
Signature

11-25-2007
Date

Registration No. 9808

Land Surveyor, Professional Engineer

County Surveyor, County Engineer

OFFICE OF THE COUNTY RECORDER

County of _____

I hereby certify that this document was filed in the County Recorder's office at _____ M. on the

_____ day of _____ A.D., 20__

County Recorder _____

BY _____ Deputy

DOCUMENT NO. _____

NORTH QUARTER CORNER SECTION 3, T41, R23

STATEMENT OF EVIDENCE

THE ORIGINAL CORNER WAS SET ON OCTOBER 6, 1849, BY DEPUTY SURVEYOR JOHN M. GLEY AND 2 BEARING TREES WERE ESTABLISHED. NO VISIBLE EVIDENCE REMAINS FOR THE CORNER OR BEARING TREES.

THERE IS A ROAD OPENING ON FILE AT COUNTY AUDITORS OFFICE ALONG THE NORTH-SOUTH QUARTER LINE OF SECTION 3. THIS WAS SURVEYED BY VICKERY BUT HE DOES NOT STATE WHAT WAS SET.

IN 1970 NORM HOIUM FOUND A 1/2" IRON PIPE AT THE INTERSECTION OF AN EAST-WEST ROAD AN A ROAD RUNNING SOUTH. THIS HAD BEEN USED BY KANABEC COUNTY HIGHWAY DEPARTMENT AND HOIUM ALSO ACCEPTED THE LOCATION FOR PLATTING LINDERS ADDITION. NORM REPLACED THE 1/2" IRON PIPE WITH A CAST IRON MONUMENT.

IN 2002 E.G. RUD AND SONS FOUND THIS MONUMENT AND ESTABLISHED KANABEC COUNTY COORDINATES ON THIS POSITION.