

CERTIFICATE OF LOCATION OF GOVERNMENT CORNER

NORTHEAST Corner of Section 4, Township 41, Range 23, 4TH P.M.
 STATE OF MINNESOTA, County of KANABEC

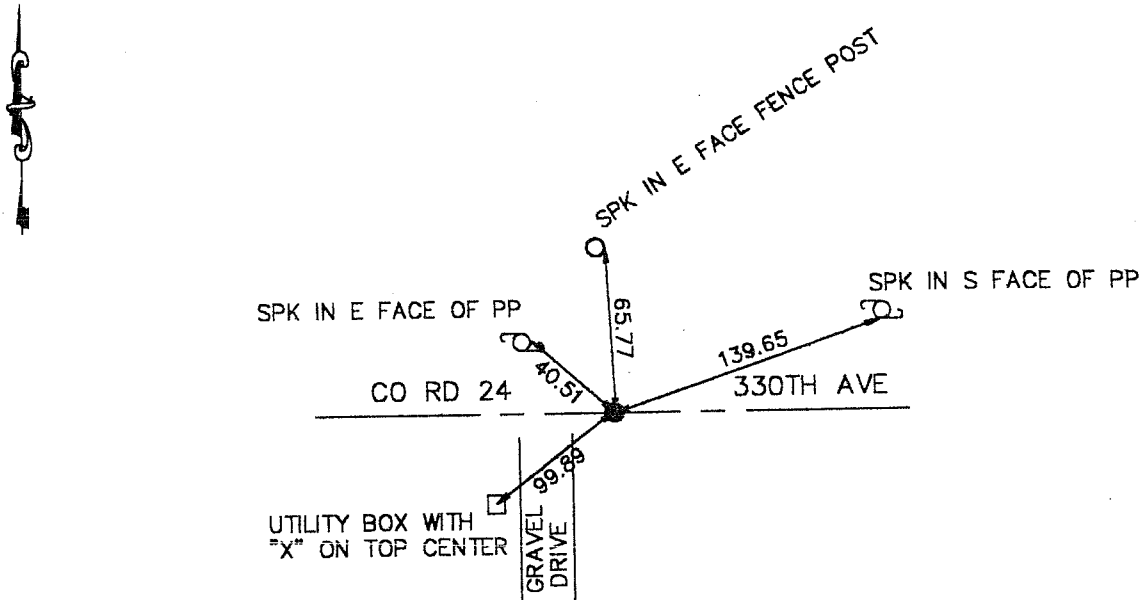
At the corner location shown on the sketch:
 On 6/20/2001 Found a 1"x14" SOLID ROD AND 2' DIAMETER ROCK.
 Set a KANABEC COUNTY MONUMENT

Kanabec County U.S. Survey Feet Coordinates
 NAD 1983, HARN 1996 Adjustment
 Obtained by RTK GPS Observation

Northing= 224927.038
 Easting= 412927.718

Note: NAD 1983, HARN 1996 Adjustment
 coordinates are NOT compatible with
 NAD 1983 coordinates
 Note: 1 Meter=3937/1200 U.S. Survey Feet

SKETCH OF REFERENCE TIES



Statement of evidence relative to this corner location is on back of page.

I hereby certify that this document and the data contained herein was prepared by me or under my direct supervision.

 Signature Date

Registration No. _____

Land Surveyor, Professional Engineer

County Surveyor, County Engineer

OFFICE OF THE COUNTY RECORDER

County of _____

I hereby certify that this document was filed in the County Recorder's office at _____ M. on the

_____ day of _____ A.D., 20__

County Recorder _____

BY _____ Deputy

DOCUMENT NO. _____

STATEMENT OF EVIDENCE

ORIGINAL CORNER WAS SET IN OCT. 1851. NO BEARING TREES REMAINING.

ON JUNE 20, 2001 WE EXCAVATED A HOLE 20' X 10' AND 4.5' DEEP. FOUND A 1"X14" SOLID ROD AT SURFACE. FOUND A 2' DIAMETER, 8"-12" THICK ROCK BELOW

MAX SHERMAN TESTIFIED CORNER WAS 9-10' EAST OF FENCE BECAUSE FENCE WAS PUT ON WEST SIDE OF DRIVEWAY GOING TO THE NORTH. MR SHERMAN HAS OWNED FARM SINCE 1950 AND HIS FATHER PREVIOUSLY OWNED SINCE 1905. THE SOLID ROD FIT THIS LOCATION.

ACCEPTED THE LOCATION OF THE SLOID ROD AND SET KANABEC COUNTY MONUMENT AND TOOK TIES.