

CERTIFICATE OF LOCATION OF GOVERNMENT CORNER

NORTH QUARTER Corner of Section 4, Township 41, Range 23, 4TH P.M.

STATE OF MINNESOTA, County of KANABEC

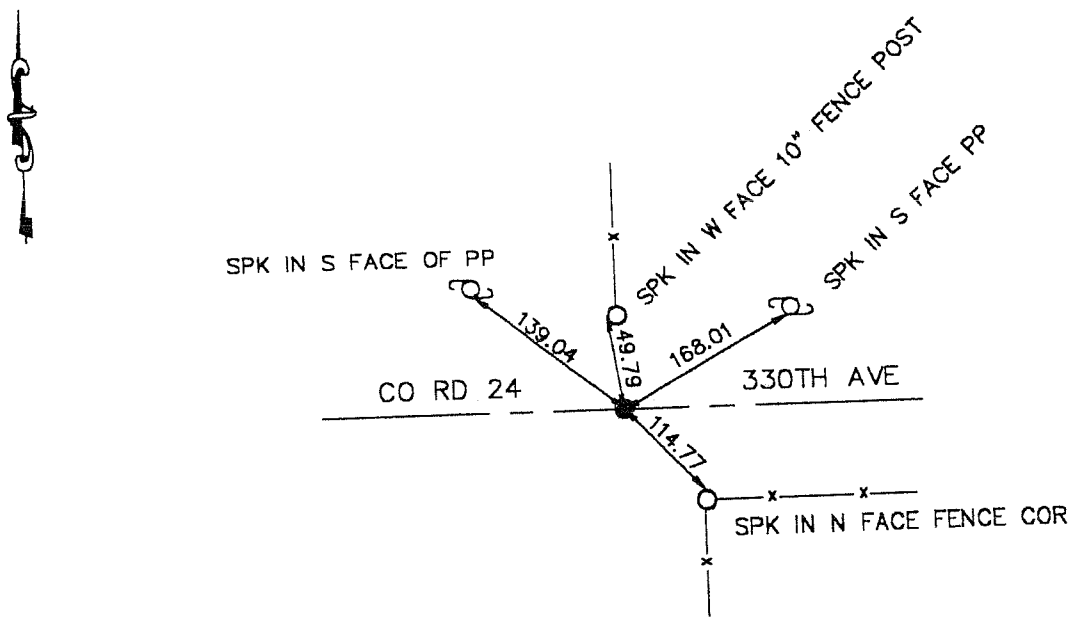
At the corner location shown on the sketch:
On 6/20/2001 Found a 1"x14" SOLID ROD.
Set a KANABEC COUNTY MONUMENT

Kanabec County U.S. Survey Feet Coordinates
NAD 1983, HARN 1996 Adjustment
Obtained by RTK GPS Observation

Northing= 224947.406
Easting= 410299.592

Note: NAD 1983, HARN 1996 Adjustment
coordinates are NOT compatible with
NAD 1983 coordinates
Note: 1 Meter=3937/1200 U.S. Survey Feet

SKETCH OF REFERENCE TIES



Statement of evidence relative to this corner location is on back of page.

I hereby certify that this document and the data contained herein was prepared by me or under my direct supervision.

Ernest J. Rud 10-03-2002
Signature Date

Registration No. 9808

- Land Surveyor, Professional Engineer
- County Surveyor, County Engineer

OFFICE OF THE COUNTY RECORDER

County of _____
I hereby certify that this document was filed in the County Recorder's office at _____ M. on the _____ day of _____ A.D., 20____

County Recorder _____
BY _____ Deputy

DOCUMENT NO. _____

STATEMENT OF EVIDENCE

ORIGINAL CORNER WAS SET ON OCT. 7, 1851. NO BEARING TREES REMAINING.

ON JUNE 20, 2001 WE EXCAVATED A HOLE 10' X 10' AND 4' DEEP. FOUND A 1"X14" SOLID ROD AT SURFACE. FOUND NO OTHER EVIDENCE BELOW SURFACE.

ACCEPTED SOLID ROD AS PERPETUATED CORNER. FITS FENCE LINE TO NORTH.

SET KANABEC COUNTY MONUMENT AND TOOK TIES.