

# CERTIFICATE OF LOCATION OF GOVERNMENT CORNER

NORTHEAST Corner of Section 5, Township 41, Range 23, 4TH P.M.  
 STATE OF MINNESOTA, County of KANABEC

At the corner location shown on the sketch:  
 On 6/20/2001 Found a 1'x16" SOLID ROD.  
 Set a KANABEC COUNTY MONUMENT

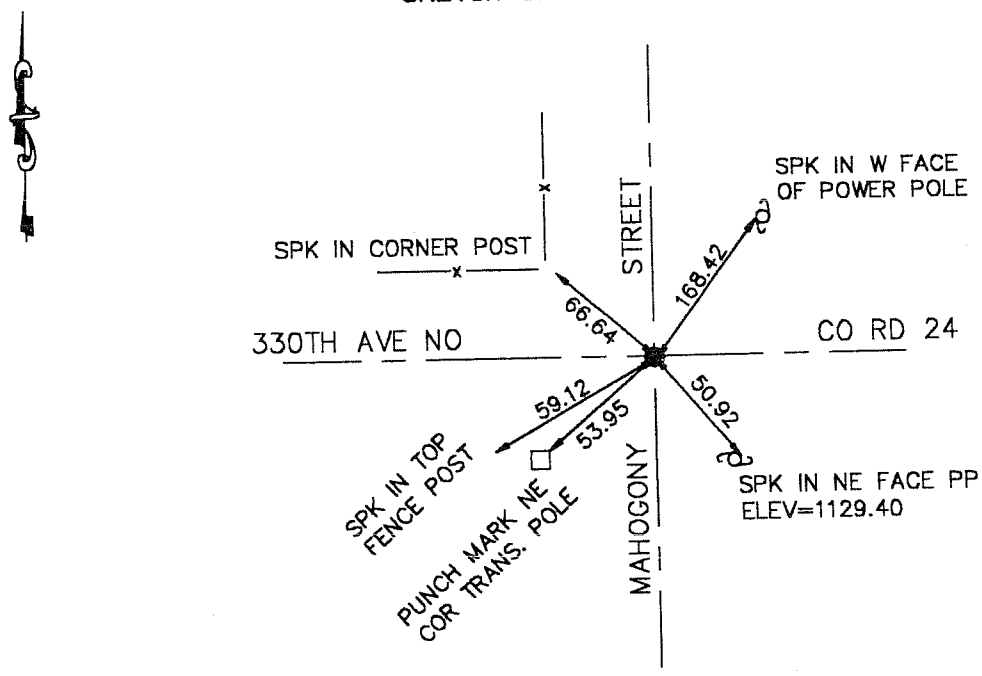
Kanabec County U.S. Survey Feet Coordinates  
 NAD 1983, HARN 1996 Adjustment  
 Obtained by RTK GPS Observation

Northing= 224972.540  
 Easting= 407663.133

Note: NAD 1983, HARN 1996 Adjustment coordinates are NOT compatible with NAD 1983 coordinates

Note: 1 Meter=3937/1200 U.S. Survey Feet

## SKETCH OF REFERENCE TIES



Statement of evidence relative to this corner location is on back of page.

I hereby certify that this document and the data contained herein was prepared by me or under my direct supervision.

Ernest L Rud                      10-03-2002  
Signature                                      Date

Registration No. 9808

Land Surveyor,                      [ ] Professional Engineer

[ ] County Surveyor,                      [ ] County Engineer

### OFFICE OF THE COUNTY RECORDER

County of \_\_\_\_\_

I hereby certify that this document was filed in the County Recorder's office at \_\_\_\_\_ M. on the \_\_\_\_\_ day of \_\_\_\_\_ A.D., 20\_\_\_\_

County Recorder \_\_\_\_\_

BY \_\_\_\_\_ Deputy

DOCUMENT NO. \_\_\_\_\_

## STATEMENT OF EVIDENCE

ORIGINAL CORNER WAS SET ON OCT. 7, 1851. NO BEARING TREES REMAINING.

RUDS LAND SURVEYORS DID A SURVEY IN JUNE 2001, ALONG NORTH LINE OF SECS 3, 4, & 5.

ON JUNE 20, 2001 WE EXCAVATED A HOLE 10' X 10' AND 6' DEEP. FOUND A 1" X 16" SOLID ROD ON SURFACE. FOUND A TRIANGULAR ROCK 1.8' NORTH OF SOLID ROD POSITION BELOW SURFACE. THERE WAS NO RECORD OF A ROCK BEING SET. FOUND ANOTHER 1" X 16" SOLID ROD BELOW FIRST ROD. ACCEPTED SOLID ROD POSITION FOR PERPETUATED CORNER.

SET KANABEC COUNTY MONUMENT AND TOOK TIES.