

# CERTIFICATE OF LOCATION OF GOVERNMENT CORNER

SOUTHEAST Corner of Section 31, Township 42, Range 23, 4TH P.M.

STATE OF MINNESOTA, County of KANABEC

At the corner location shown on the sketch:

FOUND THIS MONUMENT  
AND ESTABLISHED KANABEC COUNTY COORDINATES ON ITS LOCATION.

Kanabec County U.S. Survey Feet Coordinates  
NAD 1983, HARN 1996 Adjustment  
Obtained by RTK GPS Observation

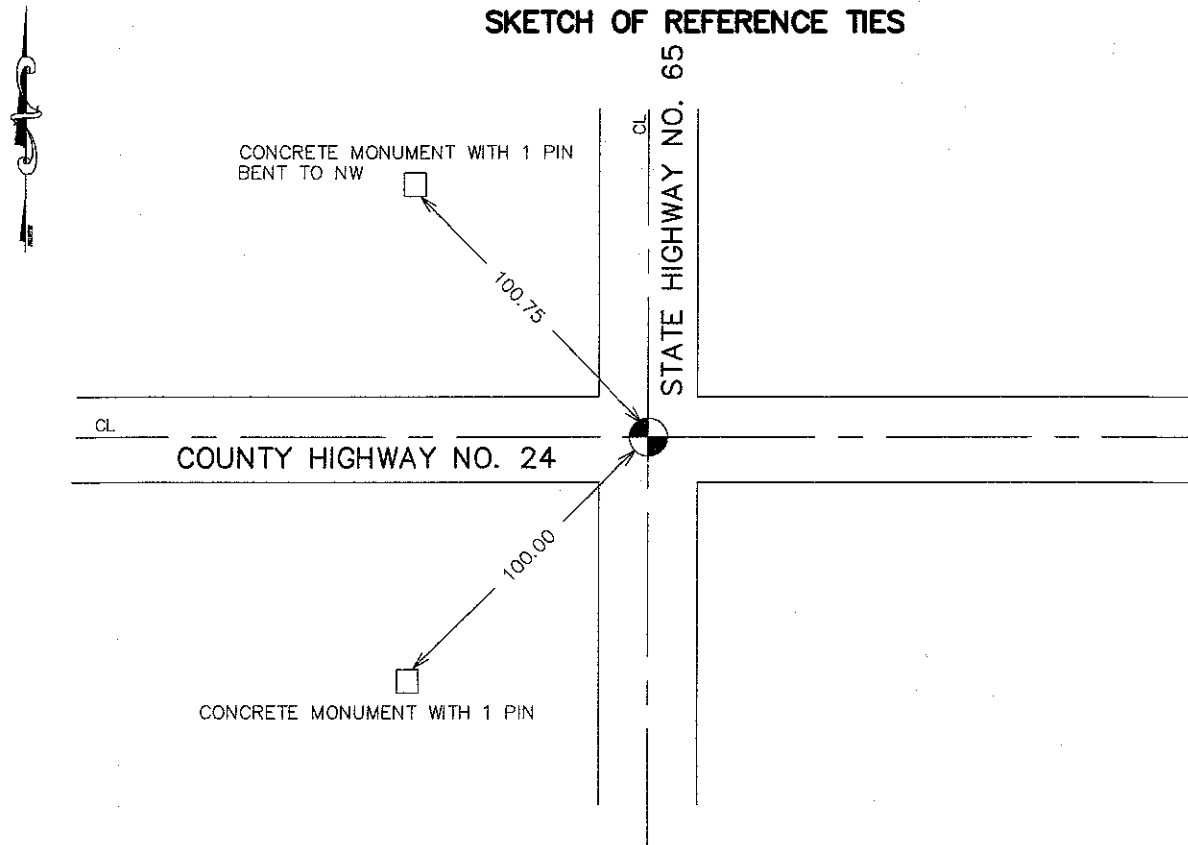
Northing= 225010.50

Easting= 402375.57

Note: NAD 1983, HARN 1996 Adjustment  
coordinates are NOT compatible with  
NAD 1983 coordinates

Note: 1 Meter=3937/1200 U.S. Survey Feet

### SKETCH OF REFERENCE TIES



Statement of evidence relative to this corner location is on back of page.

I hereby certify that this document and the data contained herein was prepared by me or under my direct supervision.

*Ernest J. Paul* 11-25-07  
Signature Date

Registration No. 9808

- Land Surveyor, [ ] Professional Engineer
- [ ] County Surveyor, [ ] County Engineer

### OFFICE OF THE COUNTY RECORDER

County of \_\_\_\_\_

I hereby certify that this document was filed in the County Recorder's office at \_\_\_\_\_ M. on the

\_\_\_\_\_ day of \_\_\_\_\_ A.D., 20\_\_

County Recorder \_\_\_\_\_

BY \_\_\_\_\_ Deputy

DOCUMENT NO. \_\_\_\_\_

SOUTHEAST CORNER SECTION 31, T42, R23

**STATEMENT OF EVIDENCE**

ALL OF THE ORIGINAL BEARING TREES ARE NOW GONE.

THERE IS A ROAD SURVEY BY JOHN NELSON, THE COUNTY SURVEYOR, DATED IN 1901, FOR A ROAD ALONG THE EAST LINE OF SECTION 6 AND THE NORTH LINE OF SECTION 5 ON FILE AT THE COUNTY RECORDER'S OFFICE.

THE STATE OF MINNESOTA DEPARTMENT OF TRANSPORTATION FOUND AN OLD STAKE AT THIS CORNER AND SET AN IRON PIN AT THIS CORNER WITH REFERENCE MONUMENT AFTER CONSTRUCTION.

ON JANUARY 10, 1983, M.B. RUDE FOUND THE DEPARTMENT OF TRANSPORTATION'S IRON PIN 1.5 FEET BELOW THE SURFACE OF THE HIGHWAY AND THE DEPARTMENT OF TRANSPORTATION'S REFERENCE MONUMENT.

HE ACCEPTED THE DEPARTMENT OF TRANSPORTATION'S PIN AS THE ORIGINAL CORNER LOCATION AND SET A 1/2" IRON PIPE ON TOP OF THE IRON PIN TO MARK THIS CORNER.

IN OCTOBER 2007 E.G. RUD AND SONS FOUND THIS 1/2" IRON PIPE AND ESTABLISHED KANABEC COUNTY COORDINATES ON THIS POSITION.