

CERTIFICATE OF LOCATION OF GOVERNMENT CORNER

WEST QUARTER Corner of Section 31, Township 42, Range 23, 4TH P.M.
~~EAST QUARTER~~ ~~Corner of Section 30~~ ~~Township 42~~ ~~Range 23~~ ~~4TH P.M.~~

STATE OF MINNESOTA, County of KANABEC

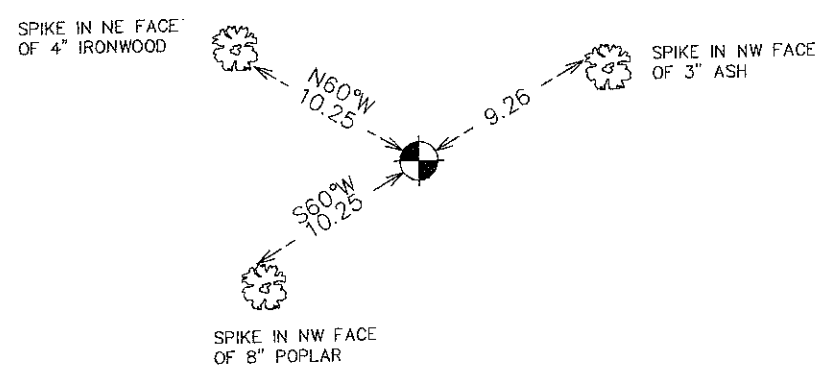
At the corner location shown on the sketch:
SET A #7 REBAR WITH AN ALUMINUM CAP

Kanabec County U.S. Survey Feet Coordinates
NAD 1983, HARN 1996 Adjustment
Obtained by RTK GPS Observation

Northing= 227652.08
Easting= 396929.63

Note: NAD 1983, HARN 1996 Adjustment
coordinates are NOT compatible with
NAD 1983 coordinates
Note: 1 Meter=3937/1200 U.S. Survey Feet

SKETCH OF REFERENCE TIES



Statement of evidence relative to this corner location is on back of page.

I hereby certify that this document and the data contained herein was prepared by me or under my direct supervision.

Ernest J. Paul 12-23-10
Signature Date

Registration No. 9808

- Land Surveyor, Professional Engineer
- County Surveyor, County Engineer

OFFICE OF THE COUNTY RECORDER

County of _____

I hereby certify that this document was filed in the County Recorder's office at _____ M. on the _____ day of _____ A.D., 20____

County Recorder _____
BY _____ Deputy

DOCUMENT NO. _____

E1/4 CORNER, SEC. 36, T42, R24
W1/4 CORNER, SEC. 31, T42, R23

STATEMENT OF EVIDENCE

THE ORIGINAL CORNER WAS SET ON DEC. 18, 1849 AND 2 BEARING TREES NOTED AS:

12" BIRCH @ 6 LINKS BEARING N48°E

12" BLACK OAK @ 39 LINKS BEARING S57°W

NO VISIBLE EVIDENCE REMAINS TODAY FOR THE CORNER OR THE BEARING TREES.

THIS CORNER FALLS 25 CHAINS NORTH OF TAMARAC SWAMP AS THE ORIGINAL NOTES ALSO STATED.

NO RECORDS OF ANY SUBSEQUENT SURVEYS COULD BE FOUND AT THE KANABEC COUNTY SURVEYOR'S OFFICE.

THERE ARE NO LINES OF OCCUPATION WITHIN HUNDREDS OF FEET.

THIS CORNER WAS TREATED AS LOST AND SET ON LINE AND AT A PROPORTIONATE DISTANCE BETWEEN THE W1/4 CORNER OF SEC 19 AND THE SW CORNER OF SEC. 31. A MONUMENT WAS SET AND KANABEC COUNTY COORDINATES WERE ESTABLISHED ON THIS POSITION.