

CERTIFICATE OF LOCATION OF GOVERNMENT CORNER

~~NORTHWEST~~
NORTHEAST

Corner of Section 30, Township 42, Range 23, 4TH P.M.
Corner of Section ~~28~~, Township ~~42~~, Range ~~24~~, 4TH P.M.

STATE OF MINNESOTA, County of KANABEC

At the corner location shown on the sketch:
ON DEC. 8, 2010 SET 1/2" IRON PIPE WITH ALUMINUM CAP

Kanabec County U.S. Survey Feet Coordinates
NAD 1983, HARN 1996 Adjustment
Obtained by RTK GPS Observation

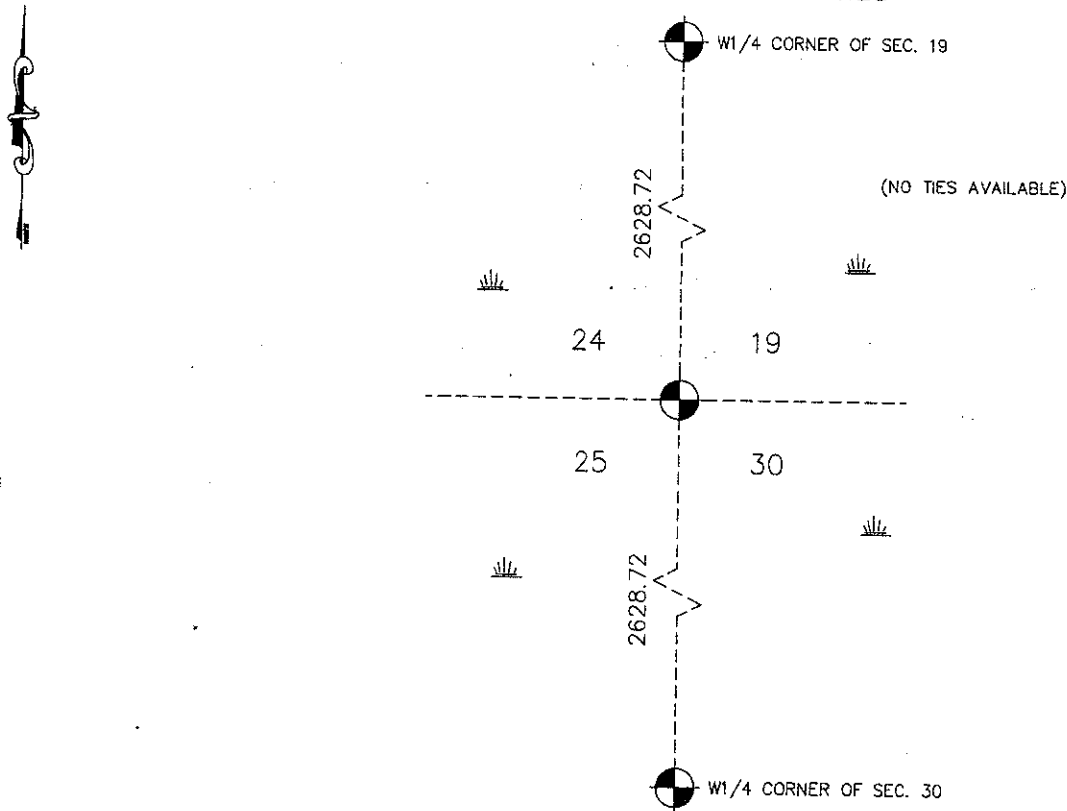
Northing= 235536.06

Easting= 397115.08

Note: NAD 1983, HARN 1996 Adjustment
coordinates are NOT compatible with
NAD 1983 coordinates

Note: 1 Meter=3937/1200 U.S. Survey Feet

SKETCH OF REFERENCE TIES



Statement of evidence relative to this corner location is on back of page.

I hereby certify that this document and the data contained herein was prepared by me or under my direct supervision.

Ernst J. Reed
Signature

12-21-2010
Date

Registration No. 9808

Land Surveyor, Professional Engineer

County Surveyor, County Engineer

OFFICE OF THE COUNTY RECORDER

County of _____

I hereby certify that this document was filed in the County Recorder's office at _____ M. on the

_____ day of _____ A.D., 20____

County Recorder _____

BY _____ Deputy

DOCUMENT NO. _____

NE CORNER, SEC. 25, T42, R24
NW CORNER, SEC. 30, T42, R23

STATEMENT OF EVIDENCE

THE ORIGINAL CORNER WAS SET ON DEC. 19, 1849 AND 4 BEARING TREES NOTED AS:

10" TAMARACK @ 11 LINKS BEARING S61°W

9" TAMARACK @ 13 LINKS BEARING N82°W

12" TAMARACK @ 15 LINKS BEARING N5°E

9" TAMARACK @ 14 LINKS BEARING S70°E

NO VISIBLE EVIDENCE REMAINS TODAY FOR THE CORNER OR THE BEARING TREES.

THIS CORNER FALLS IN A TAMARAC SWAMP AS THE ORIGINAL NOTES ALSO STATED.

NO RECORDS OF ANY SUBSEQUENT SURVEYS COULD BE FOUND AT THE KANABEC COUNTY SURVEYOR'S OFFICE.

THERE ARE NO LINES OF OCCUPATION WITHIN HUNDREDS OF FEET.

THIS CORNER WAS TREATED AS LOST AND SET ON LINE AND AT A PROPORTIONATE DISTANCE BETWEEN THE W1/4 CORNER OF SEC 19 AND THE SW CORNER OF SEC. 31. A MONUMENT WAS SET AND KANABEC COUNTY COORDINATES WERE ESTABLISHED ON THIS POSITION.