

CERTIFICATE OF LOCATION OF GOVERNMENT CORNER

WEST QUARTER Corner of Section 7, Township 42, Range 23, 4TH P.M.
STATE OF MINNESOTA, County of KANABEC

At the corner location shown on the sketch:
SET A #7 REBAR AND ALUMINUM CAP ON TOP.

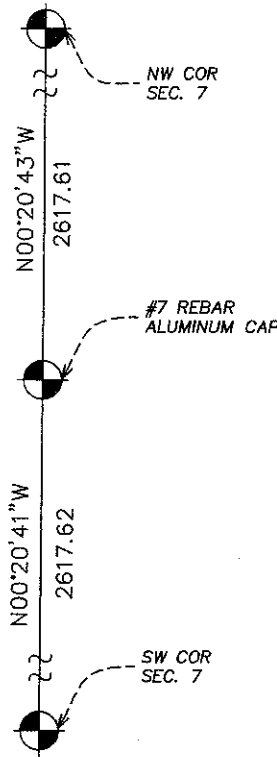
Kanabec County U.S. Survey Feet Coordinates
NAD 1983, HARN 1996 Adjustment
Obtained by RTK GPS Observation

Northing= 248681.46
Easting= 397463.95

Note: NAD 1983, HARN 1996 Adjustment
coordinates are NOT compatible with
NAD 1983 coordinates
Note: 1 Meter=3937/1200 U.S. Survey Feet

SKETCH OF REFERENCE TIES

NO TIES AVAILABLE IN SWAMP



Statement of evidence relative to this corner location is on back of page.

I hereby certify that this document and the data contained herein was prepared by me or under my direct supervision.

Ernest J. Rud
Signature

2-04-2008
Date

Registration No. 9808

- Land Surveyor, Professional Engineer
 County Surveyor, County Engineer

OFFICE OF THE COUNTY RECORDER

County of _____

I hereby certify that this document was filed in the County Recorder's office at _____ M. on the

_____ day of _____ A.D., 20__

County Recorder _____

BY _____ Deputy

DOCUMENT NO. _____

WEST QUARTER CORNER SECTION 72, TOWNSHIP 42, RANGE 234

STATEMENT OF EVIDENCE

THE ORIGINAL CORNER POST WAS SET BY DEPUTY SURVEYOR ISAAC A. BANKER ON DECEMBER 19, 1849 AND 2 BEARING TREES ESTABLISHED. NO EVIDENCE FOR THE CORNER OR BEARING TREES REMAIN. NO RECORDS OF ANY SUBSEQUENT SURVEYS COULD BE FOUND AT KANABEC COUNTY OFFICES.

(2008)
IN JANUARY 2008 E.G. RUD & SONS, INC. SET A 4 FOOT PIPE WITH AN ALUMINUM CAP ON TOP ON A LINE AND SPLIT BETWEEN THE NORTHEAST AND SOUTHEAST CORNERS OF SECTION 72.