

CERTIFICATE OF LOCATION OF GOVERNMENT CORNER

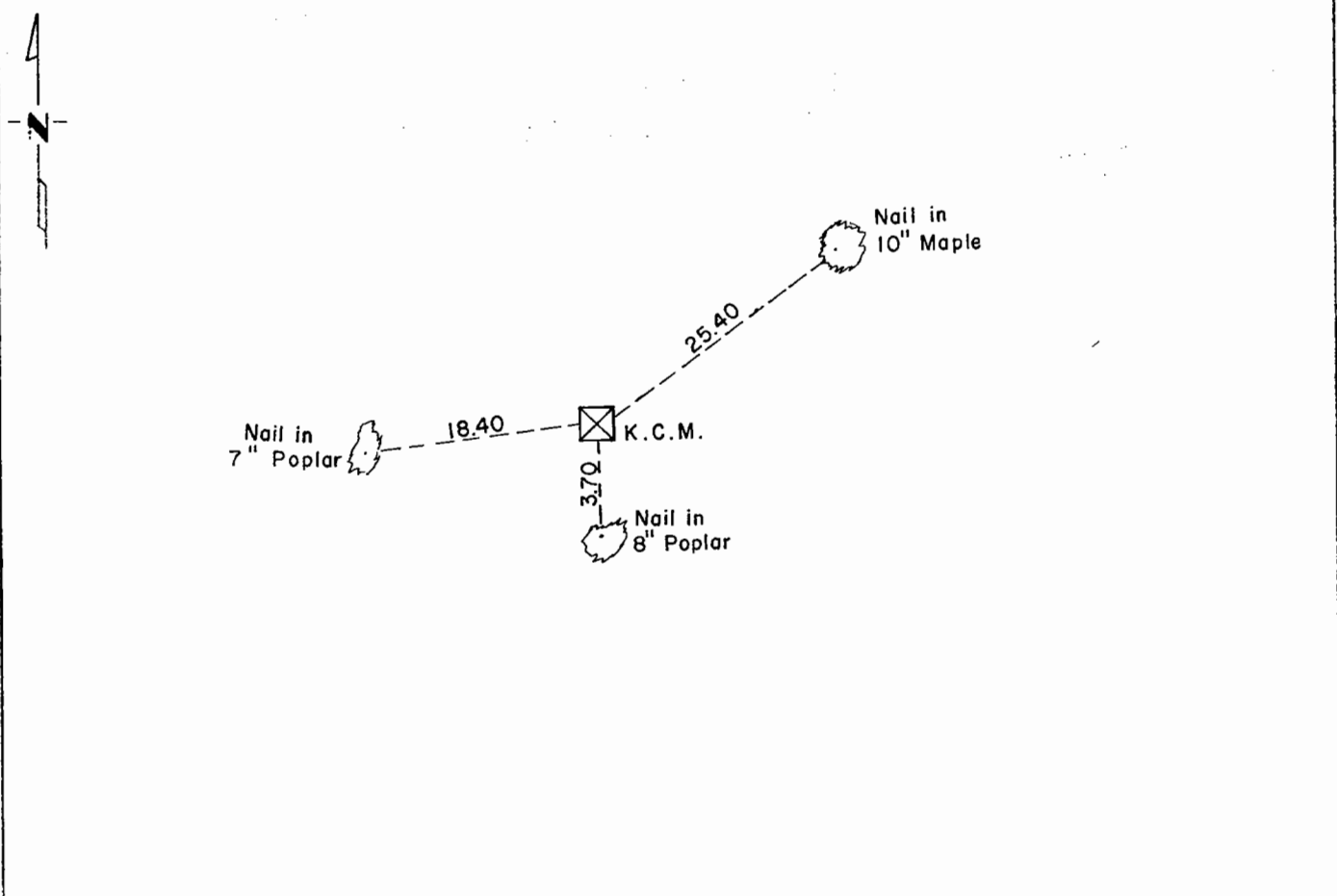
NORTHWEST Corner of Section 6, Township 42, Range 23, 5th P.M.

STATE OF MINNESOTA, County of KANABEC

At the corner location shown on the sketch:

- On _____ found a _____
DATE
- left monument as found, lowered monument, removed monument (explain)
- On 3-19-73 placed a Kanabec County Monument
DATE

SKETCH OF REFERENCE TIES



Statement of evidence relative to this corner location is on back of page.

I hereby certify that this document and the data contained herein was prepared by me or under my direct supervision.

Morrell B. Pude 3-20-74
SIGNATURE DATE

Registration No. 8195

- Land Surveyor, Professional Engineer
- County Surveyor, County Engineer

OFFICE OF THE REGISTER OF DEEDS
County of Kanabec

I hereby certify that this document was filed in the Reg. of Deeds office at 3:45 P.M. on the 22 day of April, A.D., 1974

Register of Deeds Morrell B. Pude

By _____, Deputy

DOCUMENT NO. _____

Statement of Evidence:

Set by proportional measurement between the Southwest corner of Section 7, Township 42, Range 23, and the Northwest corner of Section 31, Township 43, Range 23. This location fits well with topographic ties from original Government Survey and U.S.G.S. Quadrangle sheet.

There is no corner available for 4 to 5 miles to West to proportion to.

No evidence of original corner was found.