

CERTIFICATE OF LOCATION OF GOVERNMENT CORNER

Northeast Corner of Section 6, Township 42, Range 23, 4th P.M.
STATE OF MINNESOTA, County of KANABEC

At the corner location shown on the sketch:

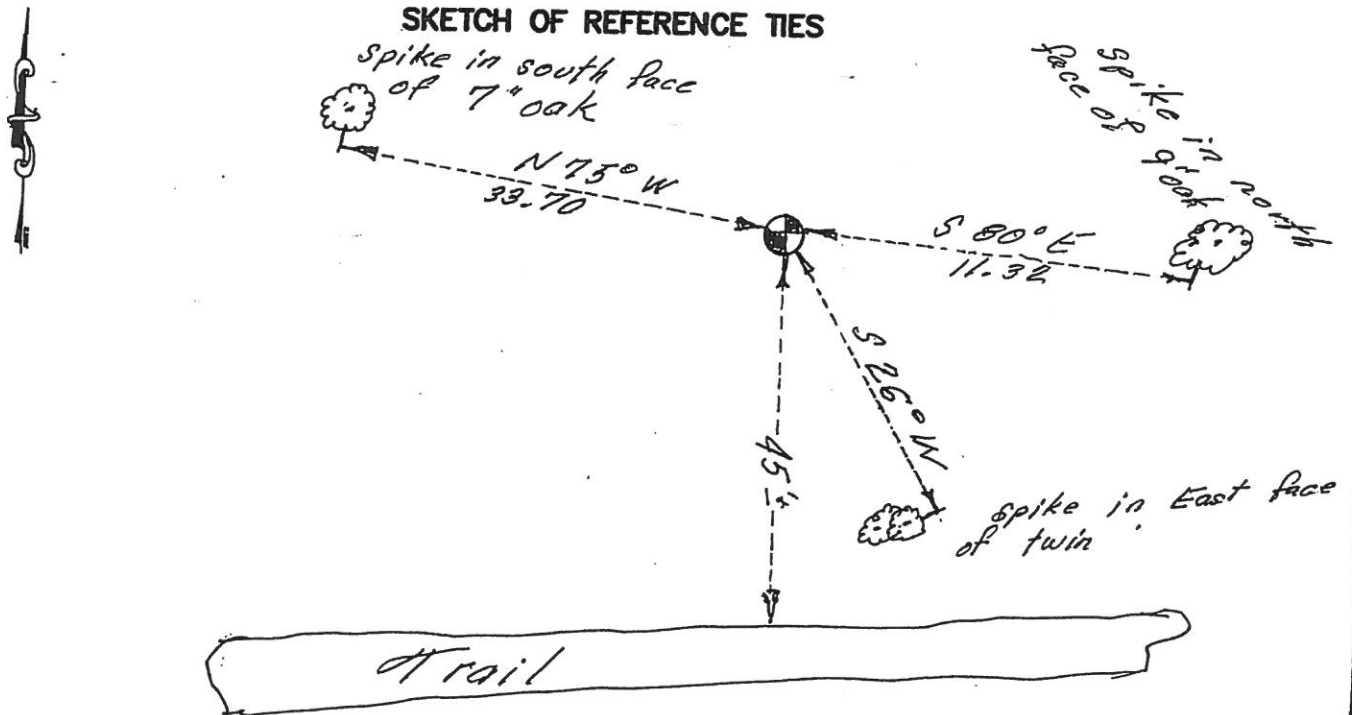
*Found Kanabec County Monument
leaning Northwesterly*

Kanabec County U.S. Survey Feet Coordinates
NAD 1983, HARN 1996 Adjustment
Obtained by RTK GPS Observation

Northing= 256835.46'
Easting= 402967.06'

Note: NAD 1983, HARN 1996 Adjustment
coordinates are NOT compatible with
NAD 1983 coordinates
Note: 1 Meter=3937/1200 U.S. Survey Feet

SKETCH OF REFERENCE TIES



Statement of evidence relative to this corner location is on back of page.

I hereby certify that this document and the data contained herein was prepared by me or under my direct supervision.

[Signature] 1-04-2018
Signature Date

Registration No. 41578

- Land Surveyor, Professional Engineer
- County Surveyor, County Engineer

OFFICE OF THE COUNTY RECORDER

County of _____

I hereby certify that this document was filed in the County Recorder's office at _____ M. on the _____ day of _____ A.D., 20____

County Recorder _____

BY _____ Deputy

DOCUMENT NO. _____

Northeast corner Section 6, Township 42, Range 23

4223023

In January 2018, while doing a survey in the Northeast Quarter and Northwest Quarter of Section 5, E.G. Rud & Sons, Inc. found a Kanabec County monument at this location. It fit the mathematical information M.B. Rude furnished in March 1974 when he set this corner. We accepted this monument as the Northeast corner of Section 6, took new ties and established Kanabec County Coordinates on this position.