

# CERTIFICATE OF LOCATION OF GOVERNMENT CORNER

NORTHEAST CORNER, Section 3, Township 42 North, Range 23 West.  
4th Principal Meridian, Kanabec County, Minnesota

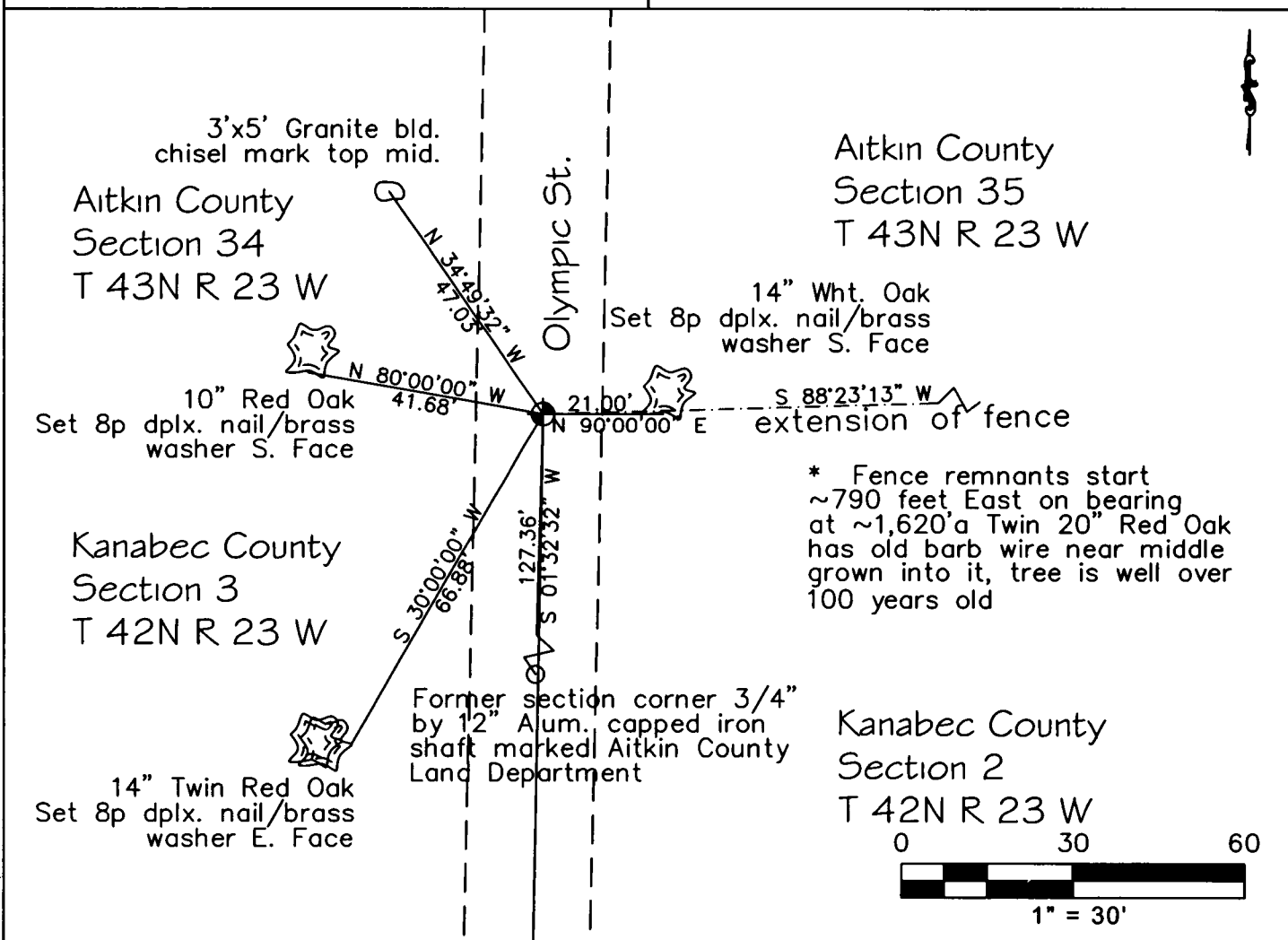
4/18/2023 Set a 5/8" by 36" rebar with Aluminum cap "Alan Hancock L.S. #57887 Section Corner" Made 4 durable ties and provided Kanabec County Coordinates

Kanabec County U.S. Survey Feet Coordinates  
NAD 1983, HARN 1996 Adjustment Obtained by Trimble R6 RTK GPS with VRS 3 minute static observation.

Northing: **256579.69**

Easting: **418752.33**

Reference previous Aitkin County Certificate of Location of Government Corner # 274746 on file in the Aitkin County Recorders office relative to this corner.



I hereby certify that this survey, plan or report was prepared by me or under my direct supervision, that the United States public land survey monument record is correct and complete to the best of my knowledge and belief and that I am a duly Licensed Land Surveyor under the laws of the state of Minnesota

*[Signature]*  
Date: 7/15/2023

Alan Hancock  
Minnesota License No. 57887

### OFFICE OF THE COUNTY RECORDER

County of Kanabec I hereby certify that this document was filed in the County Recorder's office at 2:00 P.m on the 25 day of August A.D. 2023  
County Recorder  
By Lisa Holcomb  
Document NO. \_\_\_\_\_

**Northwest Corner Section 2, T42N, R23W, 4<sup>th</sup> P.M.**4<sup>th</sup> Principal Meridian, Kanabec County, Minnesota.

The Original Public Land Survey was run by James E. Freeman, and a wood post was set Jul 9<sup>th</sup> 1849 to mark the corner. Bearing tree ties were made 7" Sugar (Maple) N 43°W 10 links, 12" White Pine N 31°E 10 links, 12" White Pine S 73°E 25 links, 14" W. Pine S 72°W 19 links. All Bearing trees are now gone.

**H. D. Keath 1913** County Surveyor H. D. Keath. On April 20, 1913 Keath Surveyed the West line of Section 26 and 35 of T 43, R 23 Aitkin County. At the NW corner of Section 26 he calls out "Established Cor". Working South, he calls out a "4" post", at the West Quarter Corner of Sec 26, a "4" Popple Pst." at the SW Corner. His measured distance is 80 chains, between the NW corner and the SW corner of Section 26. Continuing South he calls out a "Govt. B.T." (Government Bearing Tree) at the West Quarter Corner of the Section 35. At the SW Corner of Section 35, he calls out a "4" Oak. Post". That distance is 80 chains as well for the West line of Section 35.

**Geo H. Jenks Surveyor May 16, 1922** Performed a survey for a road order for Ford Township in Section 10, T42, R 23. He notes a "pump head" for the NE Corner of said Section. He did not tie in to Section 2 or 3 of said Section.

**Glen C Bickley 1924** Aitkin County Surveyor Glen C Bickley in book HDK 8 Land Surveys book on March 21-22, 1924, he measured "From the C.M. at the S.E. cor Sec 22 (T43N R 23W) chained South on the State Road 5....and at 10,554 (feet) the S.W. cor of Sec. 35 indicated by a fence going E (East). Said C.M. (concrete monument) at the S.E. cor Sec 22 was set apparently set by Glen C Bickley in the same year, 1924. No records were found of Bickley setting the concrete monument, nor any records of survey(s) between Keath's and Bickley's surveys.

**M.B Rude # 8195 Feb 25 1974** Set a spike (But did not file a Certificate of Location of Government Corner) for said corner and used centerline of road and fence line East. Rude further states in same survey (fence) Line was run by compass around Section 3 and E Half of SE Qtr by Mel Hanson of Sandstone (MN.) Further Hanson is not a Registered Surveyor and when talking to him he did not use the original survey, plat or notes in running his lines. Further Rude states " I have not used the new fence line in Section 3, but have used Govt. proportional measurements to set corners". Rude contradicts himself as one part he states he did use the Fence line East (into Section 2) and later states he used govt proportional measurement to set the Northeast Corner of Section 3 T42 R 23W. No notes show he went into Section 2 T42 R23W. He measured 2,765.54 feet South on the East line of said Section 3 to the East Quarter Corner and 2,638.08 feet to the Southeast Corner of said Section 3. GLO notes state 41.74 Chains and 40 Chains respectfully for the distances given. The combined distance is 5,403.59 feet. 5,403.59/81.74 chains is 66.1070 feet per prorated chain.

**Dec 5, 1990** Aitkin County Survey Technician Tracy Fairchild conducted a survey on the South line of Williams Township. A monument was set in place of Rude's spike and ties taken. On Aug 24 1992 Terry Betley #15811 filed a Certificate of Location of Government Corner.

**July 2021** Aitkin County Land was going to do a timber harvest on County land North of this corner. Leo Rehmann, a Landowner whose land would be affected by this corner, doubted Rude's and thus Betley's Section Corner placement. Leo met with the County Surveyors of Aitkin and Kanabec to hold off the timber cut, and they agreed if he would retain a private surveyor. He contacted Alan Hancock.

**Alan Hancock L.S. #57887** I reviewed some of the material Leo had and told him it is doubtful to find enough evidence to overturn the Certificate filed. Stare Decisis. I agreed, understanding the contract was for preliminary research to find evidence. No guarantee of moving the location unless I was 100% convinced. He agreed and hired me. December 2021 to February 2022 I did some field work, researched, talked to M. B Rude. I found the "older fence" approximately 127 feet, north of the "newer fence" installed by Mel Hanson in the early 1970's. The older fence was there as long as Leo Rehmann could remember. I received parole evidence from Leo Rehmann. Leo also remembered a large boulder near the property line fence. I located the granite boulder, and it is indeed near where the extension of the "older fence" would be. It is out of place, as it is very large, and the only one around, and too large to move with any tractor or other homeowner equipment. Near Olympic Street there is a large wetland, where the "older fence" would have been placed. Fences disappear fairly quickly in wetlands if not maintained. I saw no remnants of the "older fence" until I was East about 790 feet, and into upland ground. Since Rude never went into Section 2, he would not have seen it, only the recently constructed "newer fence". Tracy Fairchild ran the South Line of Williams Township, and would likely would have been approximately 127 feet south, so likely he did not see it either. I traced the "older fence" East and took measurements on that and the "newer" fence as well. I found no trees growing through the "newer" fence.

**Northwest Corner Section 2, T42N, R23W, 4<sup>th</sup> P.M.**4<sup>th</sup> Principal Meridian, Kanabec County, Minnesota.**Alan Hancock L.S. #57887 (cont.)**

On the "older" fence, about 1,620 feet east of Olympic Street, I found a twin 20" red oak tree growing through the fence, that I estimate to be at least 100 years of growth, or more. It was on the line of the "older" fence I surveyed. I drew a line from 2 miles East and 2 miles West to known, certified Section Corners. Drawing a line between them the Northing would land about 150 feet North of Betley's Aluminum cap, and about 25 feet North of the extension of the "older" fence and centerline of Olympic Street. Rude's proportional measurement distances according to his 1974 survey fit aliquot distances to the South, to the North I measured 10,527.90 feet N 0° 25' 19" E to the Northwest Corner Section 26 T 43 R 23 from the extension of the "older fence" and centerline of Olympic Street. Using Rude's/Betleys it would measure 10,654.25 feet. The extension of the fence would fit closer to aliquot distances in Aitkin County, than Rude's/Betleys. Since both cannot be right, one must be off. I feel it would be better to follow GLO instructions and place the excess in the North end of T 42 R 23, so that T 43 R 23 would be closer to aliquot distances to stay correct.

**Mar 16, 2022.** I set a 5/8" by 18" rebar with Aluminum cap marked "Section Corner Hancock 57887" and made ties. I submitted the draft cert to Tyler Kroschel L.S. # 44490 and Randy Quale L.S. # 42630 Kanabec and Aitkin County Surveyors, respectfully. It was decided to dig at the locations.

**Oct 28, 2022** 3 holes were dug on Olympic Street by Kanabec County Highway Department with their backhoe. The holes were approximately 10 feet wide by 16' N/S and 24" deep. Centered on the Betley corner, and the Hancock proposed new corner and a PI in the road between the two corners. No evidence was found except the 2 monuments which both were removed. Mr. Quale, Cary Wimmer of Kroschel Land Surveyors, and myself were present. More evidence was researched at both Kanabec County and Aitkin County.

**Mar 10, 2023** A previously unknown survey from Aitkin County Surveyor Glen C Bickley was found in some old road orders. On March 21-22, 1924, he measured "From the C.M. at the S.E. cor Sec 22 (T43N R 23W) chained South on the State Road 5....and at 10,554 (feet) the S.W. cor of Sec. 35 indicated by a fence going E (East). Said C.M. (concrete monument) at the S.E. cor Sec 22 was set by Glen C Bickley in the same year, 1924, after finding the stake at that location, that County Surveyor H. D. Keath stated was "an established corner" in 1913, presumably the original GLO stake. On 4/7/2021 Randy Quale L.S. replaced the C.M. with a 1/2" by 18" capped rebar over the monument. My measurement from that corner to this corner (NW cor Sec 2, T 42N, R 23W measures 10,528.13 well within the margin of error for chaining. Since there is direct evidence the corner was at the fence and centerline of the road, and I could re establish the fence from direct evidence, I will re submit the certificate of location of government corner.

**Kanabec County**

On the same day of the dig at this corner, Kroschel Land Surveyors and the county backhoe dug a mile south and discovered a found pump head noted in Jenks Survey in 1922. That measures 5,532.68 feet south of my position. My position does not fit anything well going South for a few miles into Kanabec County. It fits very well going North into Aitkin County. There are no found original corners in this vicinity in Kanabec, but there are in Aitkin County. I believe some of the nearby Kanabec positions are suspect, and further research is needed. The first true original perpetuated corner south on that line is the NE corner of Sec 34, T 42, R 23, 5 miles South. GLO has it at 401.75 chains.  $401.75 \times 66 = 26,515.50'$ . My actual position is 26,483.33 feet, -32.17 feet or .012%. In my opinion, there is no question my position is the correct one, by direct evidence, from past surveyors, I will disregard the fit with the close Kanabec County Corners, and hold Aitkin County's, and the NE corner of Sec 34, T 42, R 23 as they are original perpetuated GLO corners, and fit very well.

**Apr 18, 2023.** I re-set a 5/8" by 36" rebar with Aluminum cap marked "Section Corner Hancock 57887" and checked the previous ties and filed the cert at the Kanabec County Records Office.

**It is my conclusion that the set 5/8" plastic capped rebar set by myself, off the older fence and centerline of Olympic Street and fitting the Northing of nearby Section Corners and fitting the distance of normal aliquot parts to the Northwest Corner Sec 26 T 43 R 23 is the best available evidence of the original PLSS corner monument location.**