

395821 FILED AUG 21 '09 AT 9:11 AM

Diane M. Lafferty, County Recorder

Index No. 7-25

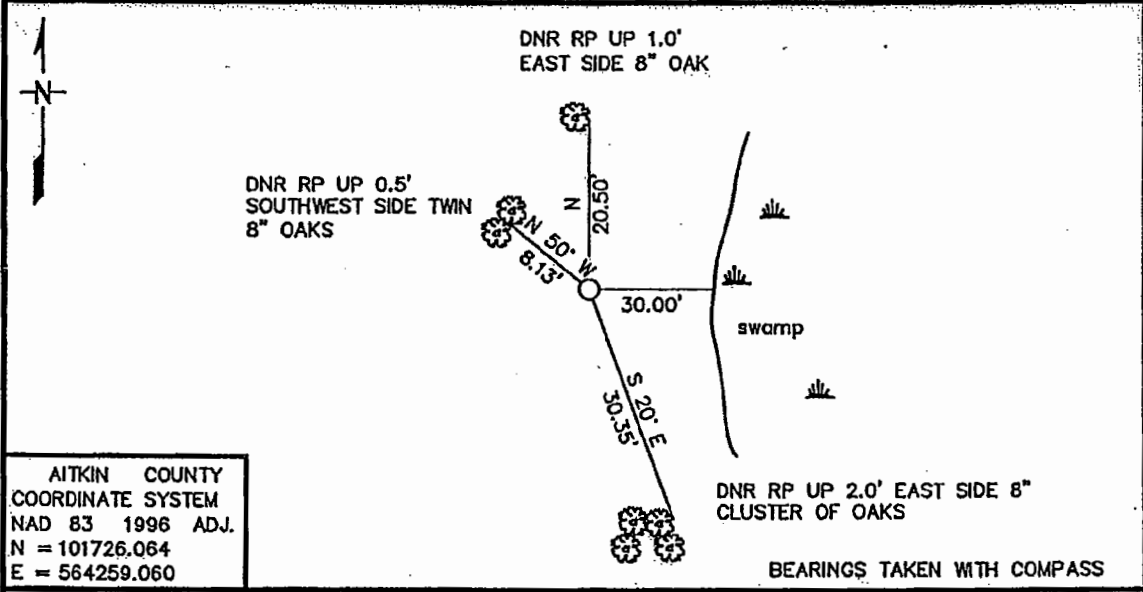
CERTIFICATE OF LOCATION OF GOVERNMENT CORNER

SOUTHEAST Corner of Section 36, Township 43, Range 23
4TH Principal Meridian, State of Minnesota, County of AITKIN

At the corner location shown on the sketch:

- On _____ found a _____
- left monument as found, lowered monument, removed monument (explain)
- On 5/06/08 Placed a 3/4" IRON ROD W/CAP STAMPED "MN DNR LS 16098"
DATE ON EAST EDGE OF ATV TRAIL

SE-SE. 36-43-23
SW-SW, 31-43-22



AITKIN COUNTY
COORDINATE SYSTEM
NAD 83 1996 ADJ.
N = 101726.064
E = 564259.060

Statement of evidence for this corner location is on back of this page. 6/2008 FOM01897.00.00.00

I certify that this document was researched and prepared by me or under my direct supervision.

SIGNATURE [Signature] DATE 5/3/09 License Number 16098

Title: Land Surveyor Professional Engineer County Surveyor County Engineer

Southeast Corner Section 36, Township 43 North, Range 23 West

The Department of Natural Resources, Division of Lands and Minerals, contacted the following for survey information:

Minnesota Secretary of State's Office
 Kanabec County Recordors' Office
 Kanabec County Highway Engineer
 Kanabec County Surveyor
 Aitkin County Recorder's Office
 Aitkin County Land Department
 Bill Hayden, Land Surveyor
 Terrence Johnson, Land Surveyor

1849 U.S. General Land Office notes obtained from the Secretary of State's Office states that a post was set to mark the corner with the following bearing trees marked:

W. Pine 30" S 60° W 30 links (19.80 feet)
 Sugar 14" N 55° W 31 links (20.46 feet)
 Maple 14" N 69° E 23 links (15.18 feet)
 Balsam 7" S 15° E 11 links (7.26 feet)

1998 MN DNR Bureau of Engineering found the Northeast Corner Section 5 of Township 42, Range 22, the Northeast Corner of Sections 3 and 13 of Township 42, Range 23 and the Northeast Corner Section 24 of Township 43, Range 23. This corner was double proportioned from these corners. We tried to get in to the corner from the southwest, but couldn't get GPS reception. The corner was not searched for at this time. The distances to the corners are as follows:

Northeast Section 5 - S89°22'48"E 10700.58 feet
 Northeast Section 3 - N89°52'00"W 10529.47 feet
 Northeast Section 13 - S00°50'43"W 10677.73 feet
 Northeast Section 24 - N00°29'24"E 15794.48 feet

2007 In March, April and June, the DNR survey crew searched for evidence of this corner, the East Quarter Corner Section 36, NE Corner Section 36, NE Corner 25, South Quarter Section 31 and the SW Corner Section 36. Some pine remains were found in the area of this corner and the East Quarter Corner Section 36, but nothing decisive was found. No other evidence of any of these corners was found. The double proportion position from 1998 was accepted as being the best location for the corner.

2008 In May the DNR survey crew set a ¾" iron rod with survey cap at the above double proportion distances.

For more information on our survey in this area please contact MN DNR, Division of Lands and Minerals, Survey Section, 1601 Minnesota Drive, Brainerd, MN 56425