

CERTIFICATE OF LOCATION OF GOVERNMENT CORNER

~~quarter~~
East quarter Corner of Section 24, Township 42, Range 23, 4th P.M.

STATE OF MINNESOTA, County of KANABEC

At the corner location shown on the sketch:

On March 16, 2004 we set a # 7 x 24" rebar with an aluminium cap at intersection of old fences.

Kanabec County U.S. Survey Feet Coordinates
 NAD 1983, HARN 1996 Adjustment
 Obtained by RTK GPS Observation

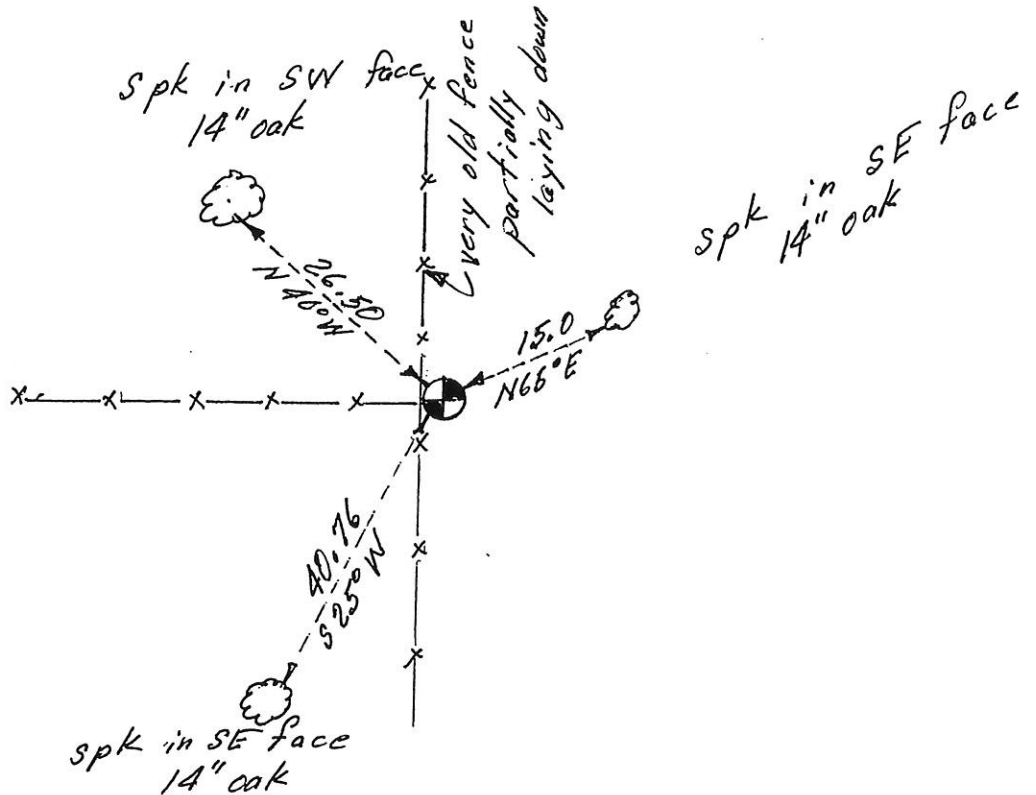
Northing= 237807.533

Easting= 429109.424

Note: NAD 1983, HARN 1996 Adjustment coordinates are NOT compatible with NAD 1983 coordinates

Note: 1 Meter=3937/1200 U.S. Survey Feet

SKETCH OF REFERENCE TIES



Statement of evidence relative to this corner location is on back of page.

I hereby certify that this document and the data contained herein was prepared by me or under my direct supervision.

Ernest L. Rud
 Signature

May 1, 2014
 Date

Registration No. 9808

Land Surveyor, Professional Engineer

County Surveyor, County Engineer

OFFICE OF THE COUNTY RECORDER

County of _____

I hereby certify that this document was filed in the County Recorder's office at _____ M. on the

_____ day of _____ A.D., 20__

County Recorder _____

BY _____ Deputy

DOCUMENT NO. _____

West Quarter Corner Section 19, township 42, Range 22

4222032

East Quarter Corner Section 24, Township 42, Range 23

4223006

The original Government post was set by U.S. Deputy Surveyor in November, 1849 and two bearing trees noted as being;

10" Aspen bearing South 20° East at 14 Links

8" Birch bearing South 20° West at 7 Links

No evidence for the corner or bearing trees could be found.

No records of subsequent surveys could be found at Kanabec County.

There is a very old fence running north, south & west at this location. No evidence of a corner could be found but we considered this fence corner location to be the best evidence for the perpetuation of this corner. A #7 rebar 24" long with an aluminum cap was set, ties taken and Kanabec County Coordinates established on this position. This position is 4' south and 18' east of a last position.