

CERTIFICATE OF LOCATION OF GOVERNMENT CORNER

EAST QUARTER Corner of Section 6, Township 39, Range 23, 4TH P.M.
STATE OF MINNESOTA, County of KANABEC

At the corner location shown on the sketch:
KANABEC COUNTY MONUMENT

Kanabec County U.S. Survey Feet Coordinates
NAD 1983, HARN 1996 Adjustment
Obtained by RTK GPS Observation

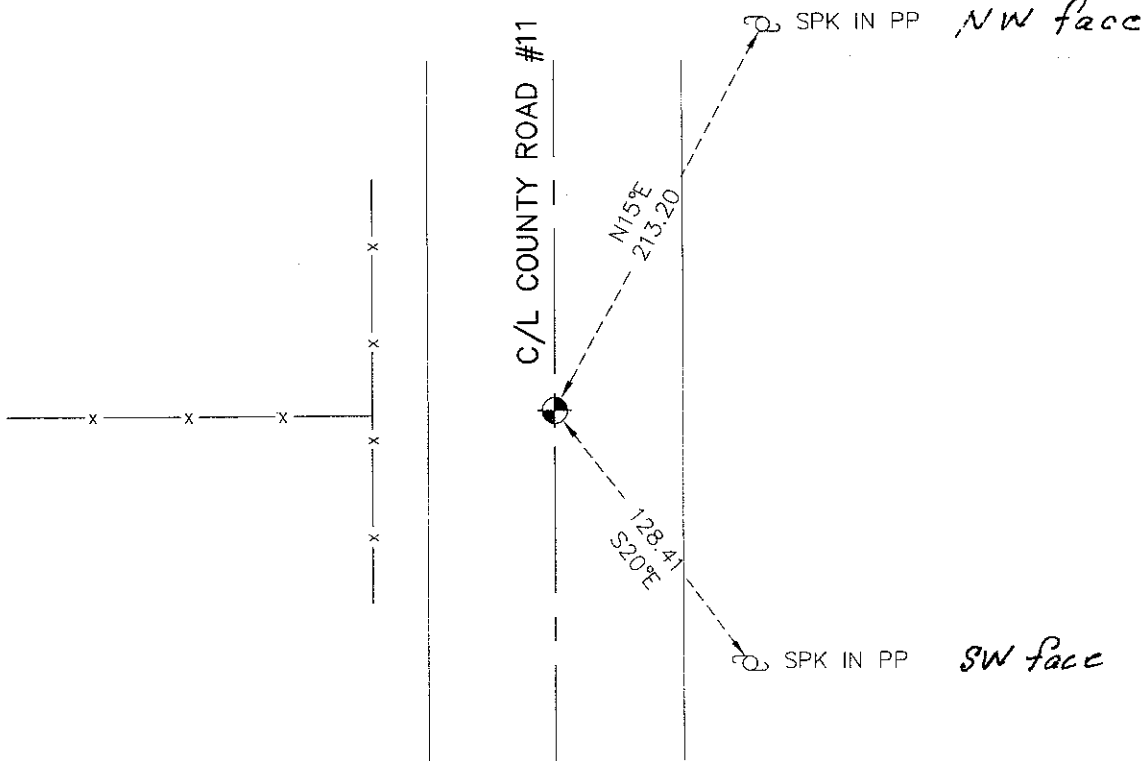
Northing= 161171.270

Easting= 411953.420

Note: NAD 1983, HARN 1996 Adjustment
coordinates are NOT compatible with
NAD 1983 coordinates

Note: 1 Meter=3937/1200 U.S. Survey Feet

SKETCH OF REFERENCE TIES



Statement of evidence relative to this corner location is on back of page.

I hereby certify that this document and the data contained herein was prepared by me or under my direct supervision.

Ernest Rud
Signature

1-26-2010
Date

Registration No. 9808

- Land Surveyor, Professional Engineer
- County Surveyor, County Engineer

OFFICE OF THE COUNTY RECORDER

County of _____

I hereby certify that this document was filed in the County Recorder's office at _____ M. on the _____ day of _____ A.D., 20____

County Recorder _____

BY _____ Deputy

DOCUMENT NO. _____

STATEMENT OF EVIDENCE

THE ORIGINAL CORNER WAS SET AND TIES TAKEN BY GOVERNMENT SURVEYOR SILAS BARNARD IN AUGUST 1855. THERE IS NO REMAINING EVIDENCE FOR THIS CORNER OR BEARING TREES.

ON JUNE 7TH 1902 JOHN NELSON MADE A SURVEY OF SECTION 5 AND AT THIS CORNER TOOK TIES TO A SANDSTONE MONUMENT. THESE TIES NO LONGER REMAIN.

IN OCTOBER 2005 E.G. RUD RAN A SURVEY AROUND SECTION 5 TO LOCATE EXISTING MONUMENTATION AND TIE IN LINES OF OCCUPATION.

ON OCTOBER 17, 2005 THE KANABEC COUNTY HIGHWAY DEPARTMENT MADE AN EXCAVATION ON THE CENTERLINE OF A BITUMINOUS COUNTY ROAD 11 AND ON AN OCCUPATION LINE RUNNING EAST AND WEST FROM THIS LOCATION.

WE MADE AN EXCAVATION 10 FEET BY 25 FEET BY 4 FEET DEEP, 1 FOOT INTO NATURAL GROUND. WE DID NOT FIND ANY SANDSTONE IN THE EXCAVATION, BUT WE DID FIND WHAT APPEARED TO BE A SMALL PIECE OF A WOOD FENCE POST.

WE TOOK TIES TO THE PIECE OF WOOD.

WE ACCEPTED THIS WOODED POST AS THE PERPETUATED LOCATION FOR THIS CORNER. WE ESTABLISHED KANABEC COUNTY COORDINATES ON THIS CORNER USING G.P.S. EQUIPMENT.

AFTER ROAD CONSTRUCTION IN 2009 THIS CORNER WAS RESET AND NEW TIES WERE TAKEN.