

CERTIFICATE OF LOCATION OF GOVERNMENT CORNER

NORTHEAST Corner of Section 7, Township 39, Range 23, 4TH P.M.

STATE OF MINNESOTA, County of KANABEC

At the corner location shown on the sketch:
On 10/ /2002 Found a 4" by 17" CAST IRON MONUMENT.

Kanabec County U.S. Survey Feet Coordinates
NAD 1983, HARN 1996 Adjustment
Obtained by RTK GPS Observation

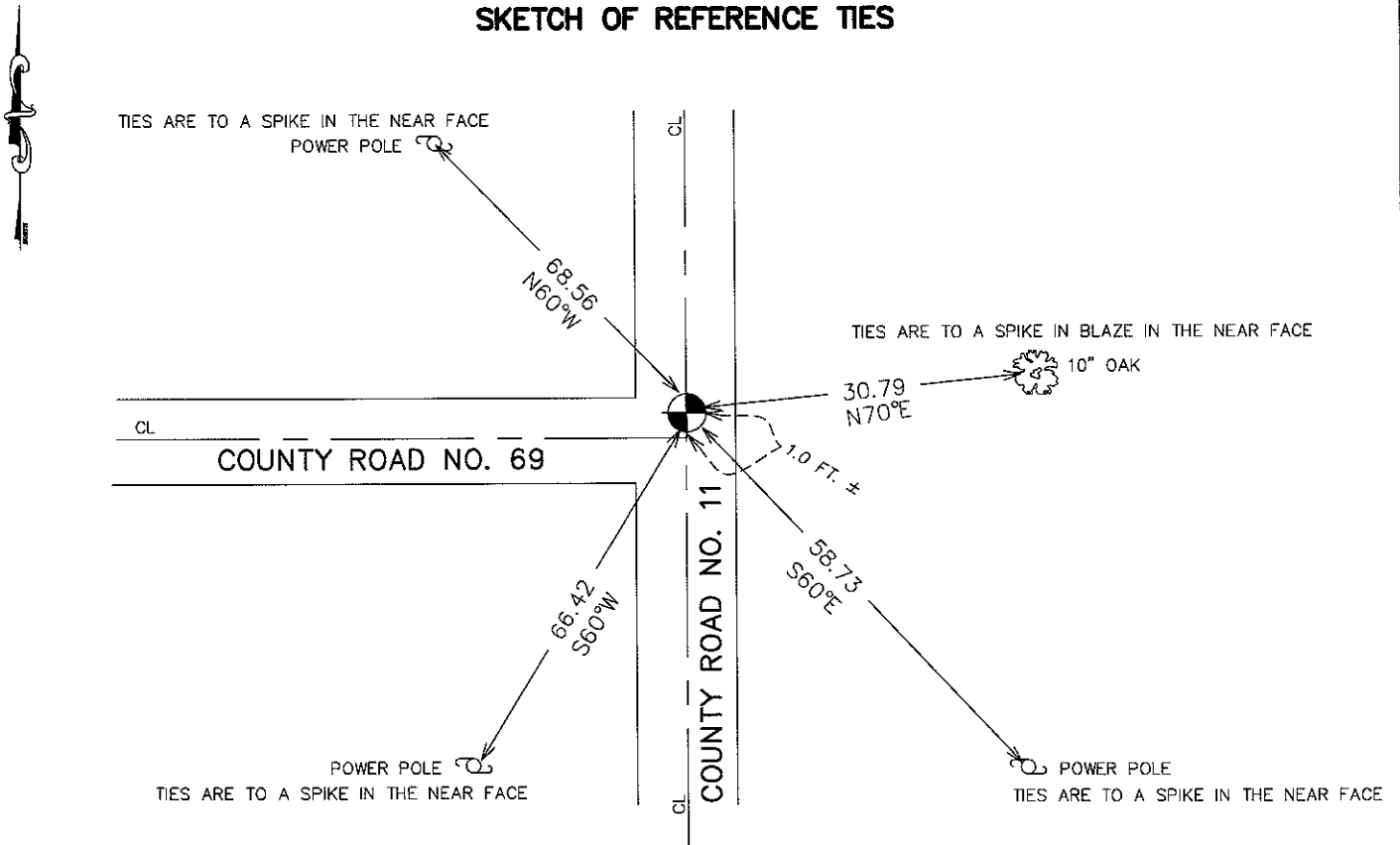
Northing= 158530.954

Easting= 411929.377

Note: NAD 1983, HARN 1996 Adjustment coordinates are NOT compatible with NAD 1983 coordinates

Note: 1 Meter=3937/1200 U.S. Survey Feet

SKETCH OF REFERENCE TIES



Statement of evidence relative to this corner location is on back of page.

I hereby certify that this document and the data contained herein was prepared by me or under my direct supervision.

Ernest Hrud 1-26-2010
Signature Date

Registration No. Ernest Hrud

Land Surveyor, Professional Engineer

County Surveyor, County Engineer

OFFICE OF THE COUNTY RECORDER

County of _____

I hereby certify that this document was filed in the County Recorder's office at _____ M. on the _____ day of _____ A.D., 20____

_____ day of _____ A.D., 20____

County Recorder _____

BY _____ Deputy

DOCUMENT NO. _____

E 1/4 CORNER, SEC. 6, T39, R23

STATEMENT OF EVIDENCE

ALL OF THE ORIGINAL BEARING TREES ARE NOW GONE.
RESURVEY DATA ON FILE:

IN 1899, THOMAS VICKERY, A SURVEYOR, SET A 4" OAK POST AT THIS CORNER. IN 1902, JOHN NELSON, A SURVEYOR, SET A 4" SANDSTONE AT THIS CORNER,

THIS CORNER IS AT THE INTERSECTION OF ROAD NORTH, SOUTH AND WEST.

IN JUNE OF 1981, MB RUDE RAN A SURVEY AROUND SECTIONS 6 AND 7 AND LOCATED THE EXISTING MONUMENT AND LINES OF OCCUPATION.

HE FOUND A SPIKE ON THE SURFACE OF THE ROAD AND OFFSET THE SPIKE AND MADE AN EXCAVATION WITH THE COUNTY BACKHOE. THE EXCAVATION WAS 15' BY 20' BY 3' DEEP. NO ADDITIONAL EVIDENCE WAS FOUND IN THE EXCAVATION.

HE ACCEPTED THIS LOCATION OF THE SPIKE FOUND AS THE PERPETUATED LOCATION OF THE ORIGINAL CORNER AND IT IS IN HARMONY WITH THE ACCEPTED LINES OF OCCUPATION. HE SET A 4" BY 17" CAST IRON MONUMENT TO REPLACE THE SPIKE.

IN 2008-2009 COUNTY ROAD 11 WAS RECONSTRUCTED. BEFORE CONSTRUCTION E.G. RUD AND SONS RETIED THIS CORNER AND ESTABLISHED KANABEC COUNTY COORDINATES ON THIS POSITION. AFTER CONSTRUCTION IN NOVEMBER 2009 THIS CORNER WAS RESET AND NEW TIES TAKEN.