

# CERTIFICATE OF LOCATION OF GOVERNMENT CORNER

East quarter Corner of Section 7, Township 39, Range 23, 4th P.M.

STATE OF MINNESOTA, County of KANABEC

At the corner location shown on the sketch:

*Found a 1 1/2" iron 1' above ground.*

Kanabec County U.S. Survey Feet Coordinates  
NAD 1983, HARN 1996 Adjustment  
Obtained by RTK GPS Observation

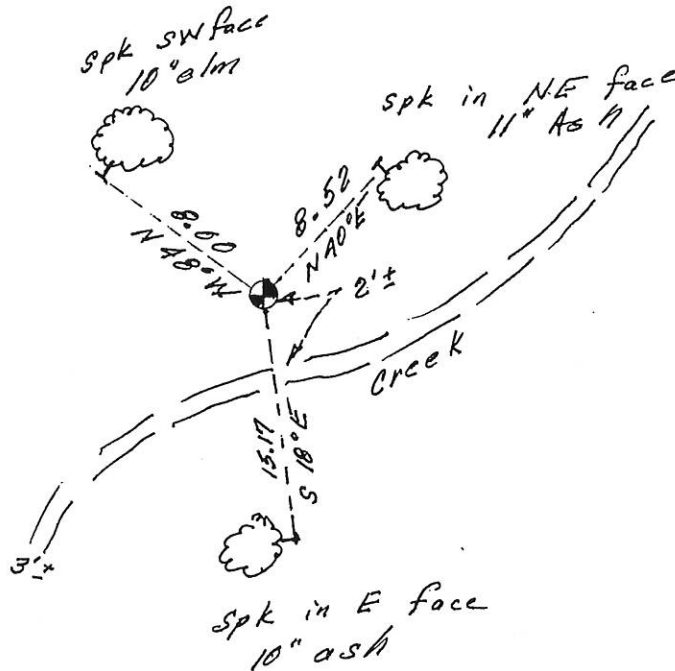
Northing= 155875.99

Easting= 411935.66

Note: NAD 1983, HARN 1996 Adjustment  
coordinates are NOT compatible with  
NAD 1983 coordinates

Note: 1 Meter=3937/1200 U.S. Survey Feet

## SKETCH OF REFERENCE TIES



Statement of evidence relative to this corner location is on back of page.

I hereby certify that this document and the data contained herein was prepared by me or under my direct supervision.

Ernest L. Rud  
Signature

4-04-15  
Date

Registration No. 9808

Land Surveyor,  Professional Engineer

County Surveyor,  County Engineer

## OFFICE OF THE COUNTY RECORDER

County of \_\_\_\_\_

I hereby certify that this document was filed in the County Recorder's office at \_\_\_\_\_ M. on the \_\_\_\_\_ day of \_\_\_\_\_ A.D., 20\_\_\_\_

County Recorder \_\_\_\_\_

BY \_\_\_\_\_ Deputy

**DOCUMENT NO.**

STATEMENT OF EVIDENCE

East Quarter Corner Section 7, Township 39, Range 23

All of the original bearing trees are now gone.

There is no resurvey data on file for this corner.

In, June, 1981 M.B. Rude ran a survey around Section 7 and located the existing monuments and lines of occupation.

This corner falls in a wooded swamp area and there are no lines of occupation near this corner or at the sixteenth corner a quarter of a mile north and south.

In 2014, E.G. Rud & Sons in doing work in Section located this corner, took new ties and established Kanabec County Coordinates on this position.

M.B. Rude set this corner by single proportional measurement between the northeast and southeast corners of Section 7.