

CERTIFICATE OF LOCATION OF GOVERNMENT CORNER

N 1/4 Corner of Section 17, Township 39, Range 23, 4 TH P.M.

STATE OF MINNESOTA, County of KANABEC

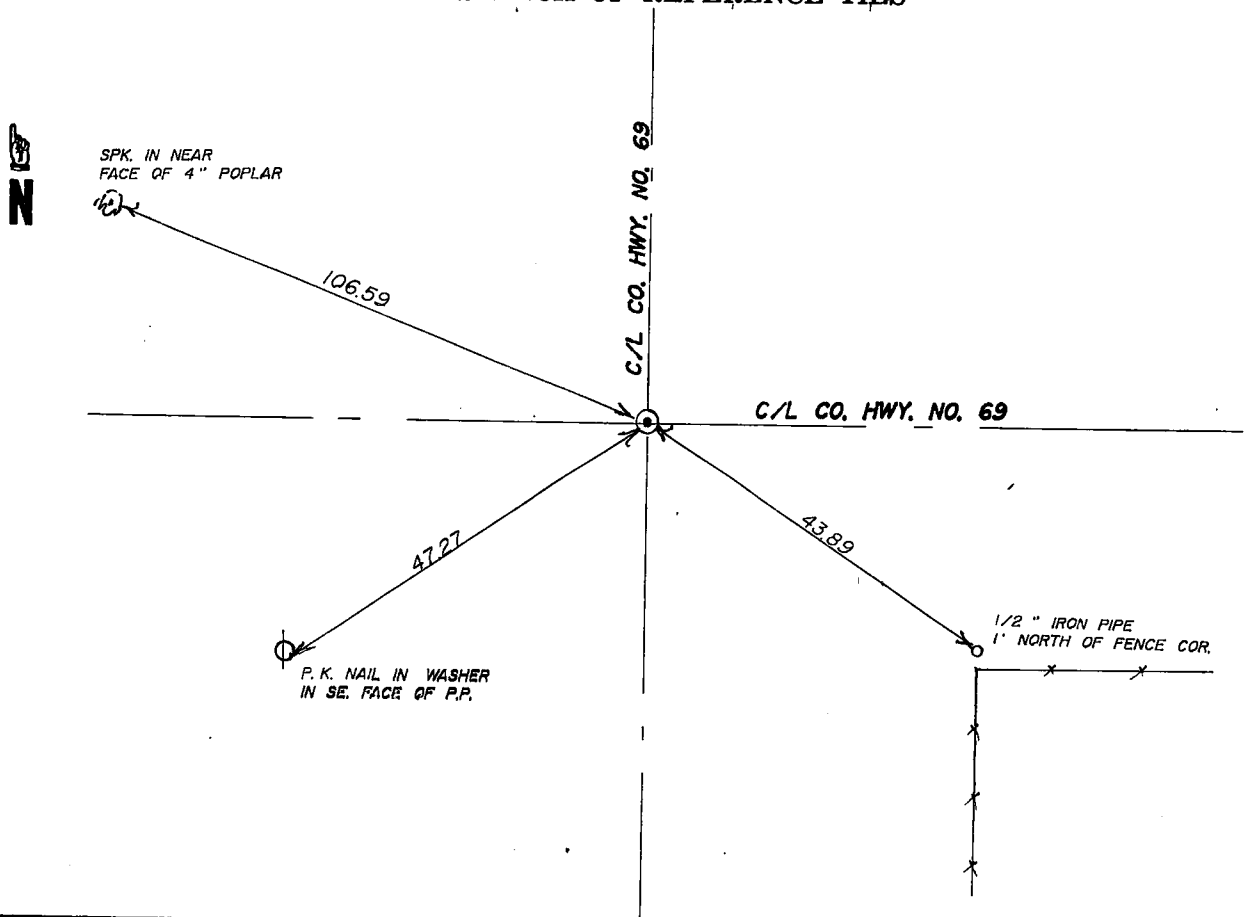
At the corner location shown on the sketch

On 11-2-1993 found a CAST IRON MONUMENT
Date

left monument as found, lowered monument, removed monument (explain)

On 11-2-1993 REplaced a CAST IRON MONUMENT
Date

SKETCH OF REFERENCE TIES



Statement of evidence relative to this corner location is on back of page.

I hereby certify that this document and the data contained herein was prepared by me or under my direct supervision.

[Signature] 1-3-1994
Signature Date

Registration No. 8195

Land Surveyor, Professional Engineer

County Surveyor, County Engineer

OFFICE OF THE REGISTER OF DEEDS

County of Kanabec

I hereby certify that this document was filed in the Register of Deeds office at 11 A. M. on the

14 day of December A.D., 1994

[Signature]
Register of Deeds

By [Signature], Deputy

DOCUMENT NO. _____

STATEMENT OF EVIDENCE

N.C. Hoiium, Registered Land Surveyor No. 4427, found an iron pipe at the centerline intersection of roads in 1968 and set a cast iron monument at that location and filed a Corner Certificate. No excavation was made at that time.

On November 2, 1993, we found the cast iron monument and offset the monument and made an excavation with a backhoe. We found a hardstone with a possible "+" mark about 3 feet west and 3 feet north of the cast iron monument. However, there is no record of this monument and the "+" marking was not conclusive, so we reset the cast iron monument in its original location.