

CERTIFICATE OF LOCATION OF GOVERNMENT CORNER

Northeast Corner of Section 18, Township 39 North, Range 23 West,
4th Principal Meridian, Kanabec County, State of Minnesota

At the corner location shown on the sketch:
On 8/23/2016 set a Large Mag Spike from found monuments in the plat of Highland Golf Estates.

Kanabec County U.S. Survey Feet Coordinates
NAD 1983, HARN 1996 Adjustment
Obtained by RTK GPS observation
Northing: 153221.4796
Easting: 411942.4081

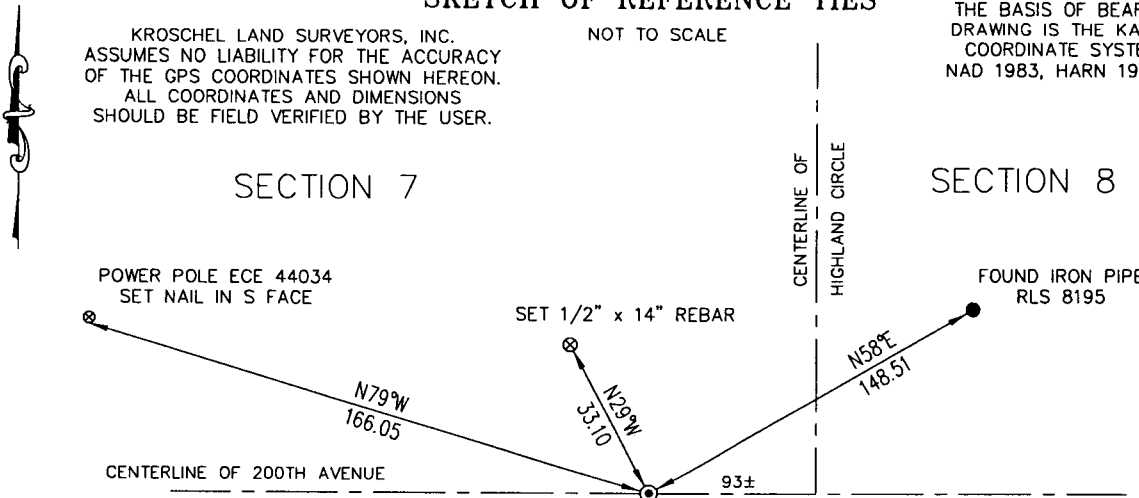
Note: NAD 1983, HARN 1996 Adjustment
coordinates are NOT compatible with
NAD 1983 coordinates
Note: 1 Meter = 3937/1200 U.S. Survey Feet

SKETCH OF REFERENCE TIES

KROSCHER LAND SURVEYORS, INC.
ASSUMES NO LIABILITY FOR THE ACCURACY
OF THE GPS COORDINATES SHOWN HEREON.
ALL COORDINATES AND DIMENSIONS
SHOULD BE FIELD VERIFIED BY THE USER.

NOT TO SCALE

THE BASIS OF BEARINGS FOR THIS
DRAWING IS THE KANABEC COUNTY
COORDINATE SYSTEM BY MNDOT,
NAD 1983, HARN 1996 ADJUSTMENT



SECTION 18

SECTION 17

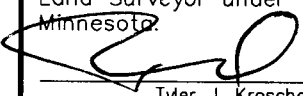


Kroschel Land Surveyors, Inc.

1639 Main Street North, Suite 6, Pine City, MN 55063
Phone: 320-629-3267 Fax: 320-629-0176

Statement of evidence relative to this corner location is on back of page.

I hereby certify that this survey, plan, or report was prepared by me or under my direct supervision, that the United States public land survey monument record is correct and complete to the best of my knowledge and belief, and that I am a duly Licensed Land Surveyor under the laws of the State of Minnesota.


Tyler J. Kroschel
Date 1-20-2020

License No. 44490
 Land Surveyor County Surveyor

OFFICE OF THE COUNTY RECORDER
County of Kanabec

I hereby certify that this document was filed in the County Recorder's office at 11:00 A.M. on the 27 day of October, A.D., 2020

County Recorder Christa Holcomb
By _____, Deputy

DOCUMENT NO. _____

Statement of Evidence:

Reference previous Certificate No.s 580 and 3923126 for full history of this corner.

In August 2016, a survey was made around Section 18, Township 39 North, Range 23 West, 4th Principal Meridian for Dale Bankers to locate existing monuments.

On 8/23/2016, a search was made by checking with a magnetic locator in the center of the County Highway. No evidence of the corner or ties was found. I located some of the lot corners in the recorded plat of Highland Golf Estates and computed the corner location. My computed coordinate was approximately 0.4 feet east of Ernie Rud's coordinate location (which is typical in this area). My computed location fit the dimensions from previous section breakdowns to the adjacent section corners very well. I placed a Mag Spike at my computed location and established reference ties, as shown.

This location was determined to be the best available evidence of the original corner location.



Kroschel Land Surveyors, Inc.

1639 Main Street North, Suite 6, Pine City, MN 55063
Phone: 320-629-3267 Fax: 320-629-0176