

CERTIFICATE OF LOCATION OF GOVERNMENT CORNER

NORTH QUARTER Corner of Section 19, Township 39, Range 23, 4TH P.M.

STATE OF MINNESOTA, County of KANABEC

At the corner location shown on the sketch:
On 05/29/2003 Set a Kanabec County Monument.

Kanabec County U.S. Survey Feet Coordinates
NAD 1983, HARN 1996 Adjustment
Obtained by RTK GPS Observation

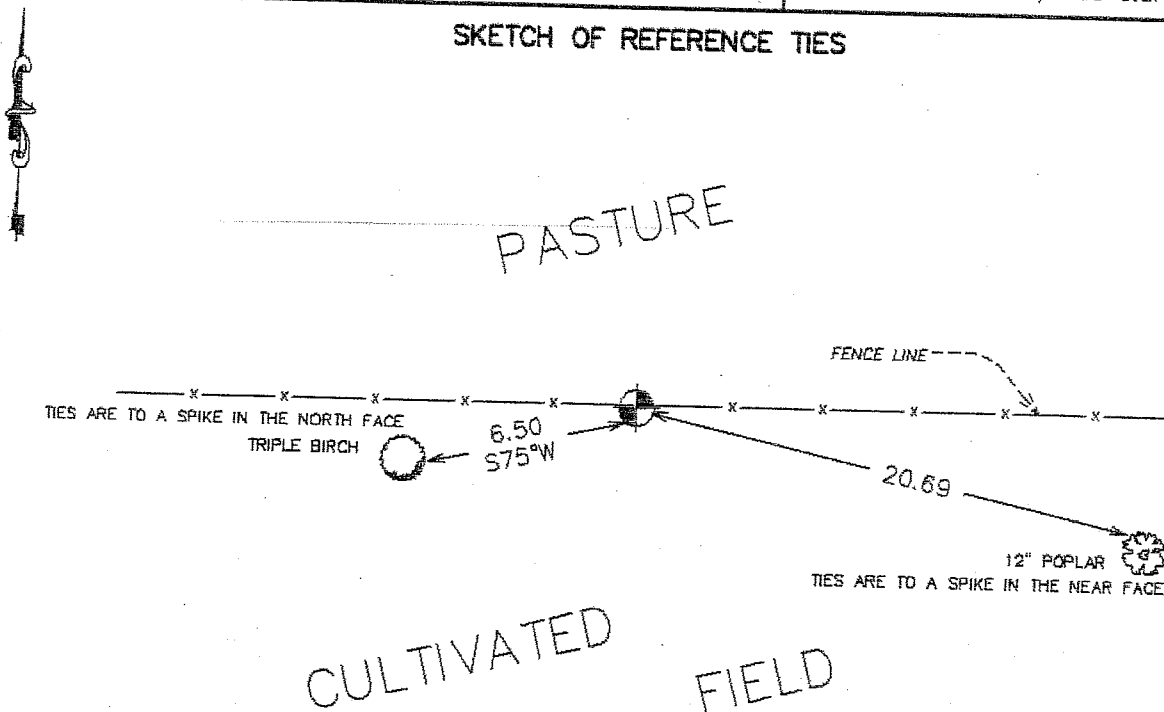
Northing= 147923.247

Easting= 409292.541

Note: NAD 1983, HARN 1996 Adjustment
coordinates are NOT compatible with
NAD 1983 coordinates

Note: 1 Meter=3937/1200 U.S. Survey Feet

SKETCH OF REFERENCE TIES



Statement of evidence relative to this corner location is on back of page.

I hereby certify that this document and the data contained herein was prepared by me or under my direct supervision.

Ernest G. Reed
Signature

7-08-2003
Date

Registration No. 9808

Land Surveyor, Professional Engineer

County Surveyor, County Engineer

OFFICE OF THE COUNTY RECORDER

County of _____

I hereby certify that this document was filed in the County Recorder's office at _____ M. on the _____ day of _____ A.D., 20____

County Recorder _____

BY _____ Deputy

DOCUMENT NO. _____

STATEMENT OF EVIDENCE

Original Government corner was set in September 1855 by Silas Barnard.

Evidence of original corner and bearing trees no longer remain.

In October 1898 John B. Vickerey did a survey of Section 19 recorded on page 198, book #2 of Survey Records. These notes don't indicate what was set at this corner.

May 2003

We did a survey around Sections 19 and 30 to tie in corners and lines of occupation. We did a search at this corner, but could not locate any evidence to reestablish it. Therefore we set this corner at single proportionate measurement between the Northwest and Northeast corner of Section 19. This location fell on a very old fence running east and west. No lines of occupation to the north or south. Set monument, took ties, and established Kanabec County coordinates on monument.