

CERTIFICATE OF LOCATION OF GOVERNMENT CORNER

NORTHEAST Corner of Section 19, Township 39, Range 23, 4TH P.M.

STATE OF MINNESOTA, County of KANABEC

At the corner location shown on the sketch:
On 05/29/2003 Set Kanabec County Monument.

Kanabec County U.S. Survey Feet Coordinates
NAD 1983, HARN 1996 Adjustment
Obtained by RTK GPS Observation

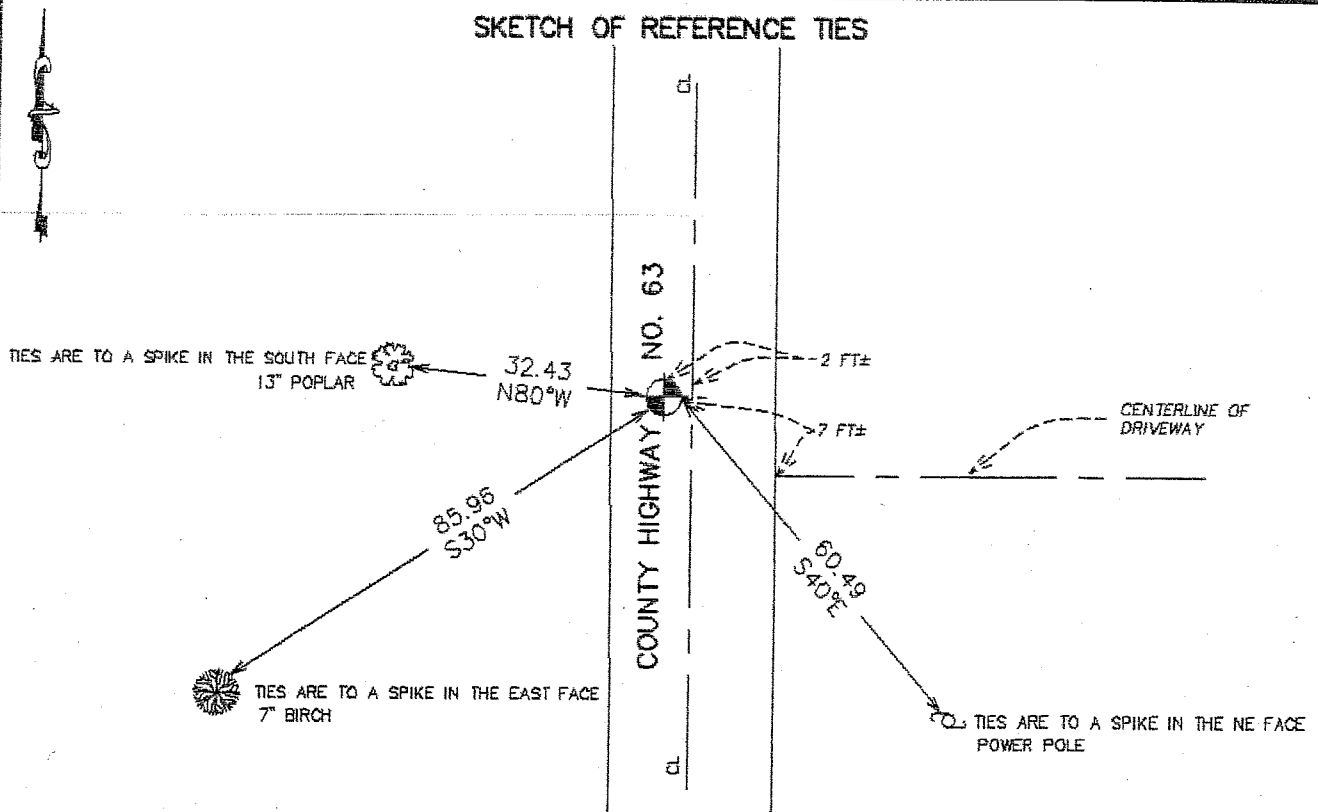
Northing= 147919.030

Easting= 411941.616

Note: NAD 1983, HARN 1996 Adjustment
coordinates are NOT compatible with
NAD 1983 coordinates

Note: 1 Meter=3937/1200 U.S. Survey Feet

SKETCH OF REFERENCE TIES



Statement of evidence relative to this corner location is on back of page.

I hereby certify that this document and the data contained herein was prepared by me or under my direct supervision.

Ernest J. Reed
Signature

7-08-2003
Date

Registration No. 9808

Land Surveyor, [] Professional Engineer

[] County Surveyor; [] County Engineer

OFFICE OF THE COUNTY RECORDER

County of _____

I hereby certify that this document was filed in the County Recorder's office at _____ M. on the _____ day of _____ A.D., 20____

County Recorder _____

BY _____ Deputy

DOCUMENT NO. _____

STATEMENT OF EVIDENCE

SEE TIE SHEET NO. 713

All of the original bearing trees are now gone.

This corner falls at the intersection of north-south County Highway No. 63.

On October 31, 1986, we made an excavation with the county backhoe and at 2 feet below the surface we found a 12" by 16" sandstone with a "+" into the top. We set a 7/8" by 36" capped rebar to replace the sandstone monument.

May 2003

Found monument, rebar bent, straightened monument, reset new monument, took new ties and established Kanabec County coordinates on monument.