

**CERTIFICATE OF LOCATION OF GOVERNMENT CORNER**

East Quarter Corner of Section 19, Township 39 North, Range 23 West,  
4th Principal Meridian, Kanabec County, State of Minnesota

At the corner location shown on the sketch:

On 5/24/2017 set a 7/8" x 20" Rebar Monument with  
Aluminum Cap in place of a found spike.

Kanabec County U.S. Survey Feet Coordinates  
NAD 1983, HARN 1996 Adjustment  
Obtained by RTK GPS observation  
Northing: 145277.0666  
Easting: 411936.9317

Note: NAD 1983, HARN 1996 Adjustment  
coordinates are NOT compatible with  
NAD 1983 coordinates

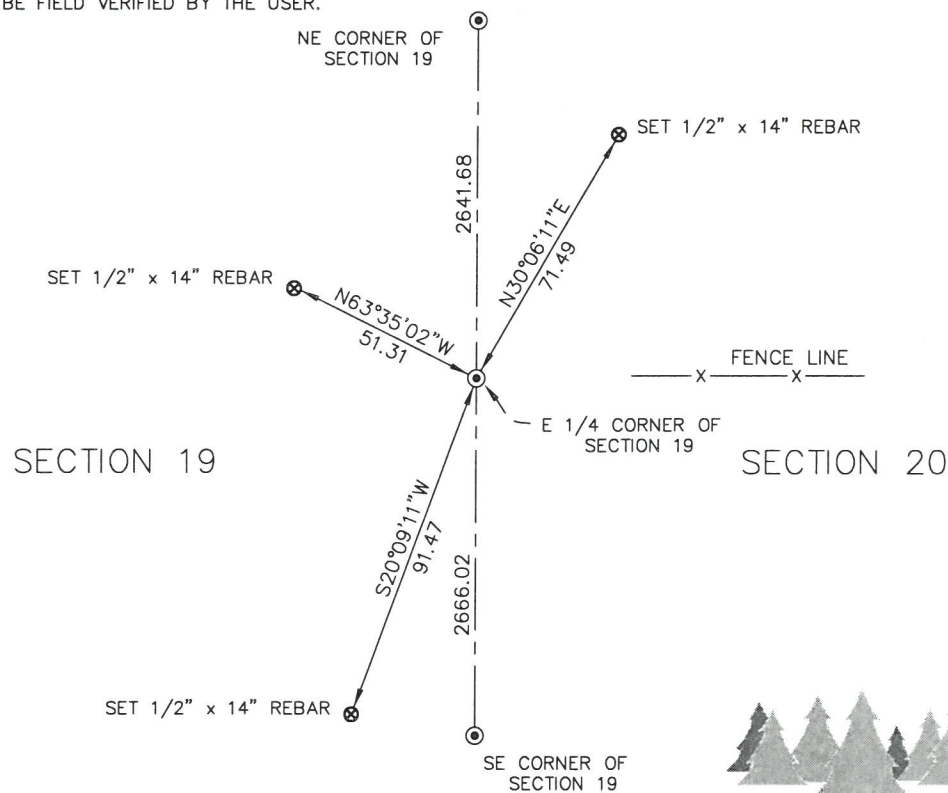
Note: 1 Meter = 3937/1200 U.S. Survey Feet

**SKETCH OF REFERENCE TIES**

NOT TO SCALE

KROSCHER LAND SURVEYORS, INC.  
ASSUMES NO LIABILITY FOR THE ACCURACY  
OF THE GPS COORDINATES SHOWN HEREON.  
ALL COORDINATES AND DIMENSIONS  
SHOULD BE FIELD VERIFIED BY THE USER.

THE BASIS OF BEARINGS FOR THIS  
DRAWING IS THE KANABEC COUNTY  
COORDINATE SYSTEM BY MNDOT,  
NAD 1983, HARN 1996 ADJUSTMENT



**Kroschel Land Surveyors, Inc.**

1639 Main Street North, Suite 6, Pine City, MN 55063  
Phone: 320-629-3267 Fax: 320-629-0176

Statement of evidence relative to this corner location is on back of page.

I hereby certify that this survey, plan, or report was prepared by me or under my direct supervision, that the United States public land survey monument record is correct and complete to the best of my knowledge and belief, and that I am a duly Licensed Land Surveyor under the laws of the State of Minnesota.

Tyler J. Kroschel

12-28-2017  
Date

License No. 44490

☐ Land Surveyor

☒ County Surveyor

**OFFICE OF THE COUNTY RECORDER**

County of Kanabec

I hereby certify that this document was filed in the  
County Recorder's office at \_\_\_\_\_ .M. on the  
\_\_\_\_\_ day of \_\_\_\_\_ A.D., 20\_\_\_\_  
County Recorder \_\_\_\_\_

By \_\_\_\_\_, Deputy

DOCUMENT NO. \_\_\_\_\_

Statement of Evidence:

In August of 1855, Deputy Surveyor Silas Barnard set a post to mark the East Quarter Corner of Section 19, Township 39 North, Range 23 West, 4th Principal Meridian.

Reference ties were taken to:

10 inch Oak at North 30 degrees West a distance of 10 links  
8 inch Lind at East a distance of 90 links

All of the original Government corner evidence was searched for. None was found.

1898— Book A of Surveys, P.156 filed at the Highway Department. T.B. Vickery gives a distance of 40.19 chains (2652.54 feet) to the northeast corner of Section 19. He does not state what was found or set at the East Quarter corner.

1898— Book A of Surveys, P.198 filed at the Highway Department. T.B. Vickery gives a distance of 40.07 chains (2644.62 feet) to the southeast corner of Section 19, 40.07 chains (2644.62) to the northeast corner of Section 19, and 40.00 chains (2640 feet) to the center of Section 19. He does not state what was found or set at the East Quarter corner.

In April 2017, a survey was made around Section 19, Township 39 North, Range 23 West, 4th Principal Meridian for Diane Bankers to locate existing monuments, lines of occupation and establish search areas.

On 4/27/2017 we made a 15' x 15' x 4' deep excavation with a skid steer at the centerline of the County Road and fence line east. Near the surface we found a 60d spike. No other evidence was found in the excavation.

On 5/24/2017 I accepted the found spike as the best available evidence of the corner position and set a 7/8" x 20" Rebar with Aluminum Cap in its place.

Established reference ties and assigned Kanabec County Coordinates.



**Kroschel Land Surveyors, Inc.**

1639 Main Street North, Suite 6, Pine City, MN 55063  
Phone: 320-629-3267 Fax: 320-629-0176