

CERTIFICATE OF LOCATION OF GOVERNMENT CORNER

NORTH QUARTER Corner of Section 30, Township 39, Range 23, 4TH P.M.

STATE OF MINNESOTA, County of KANABEC

At the corner location shown on the sketch:
On 05/29/2003 Found a Sandstone.

Kanabec County U.S. Survey Feet Coordinates
NAD 1983, HARN 1996 Adjustment
Obtained by RTK GPS Observation

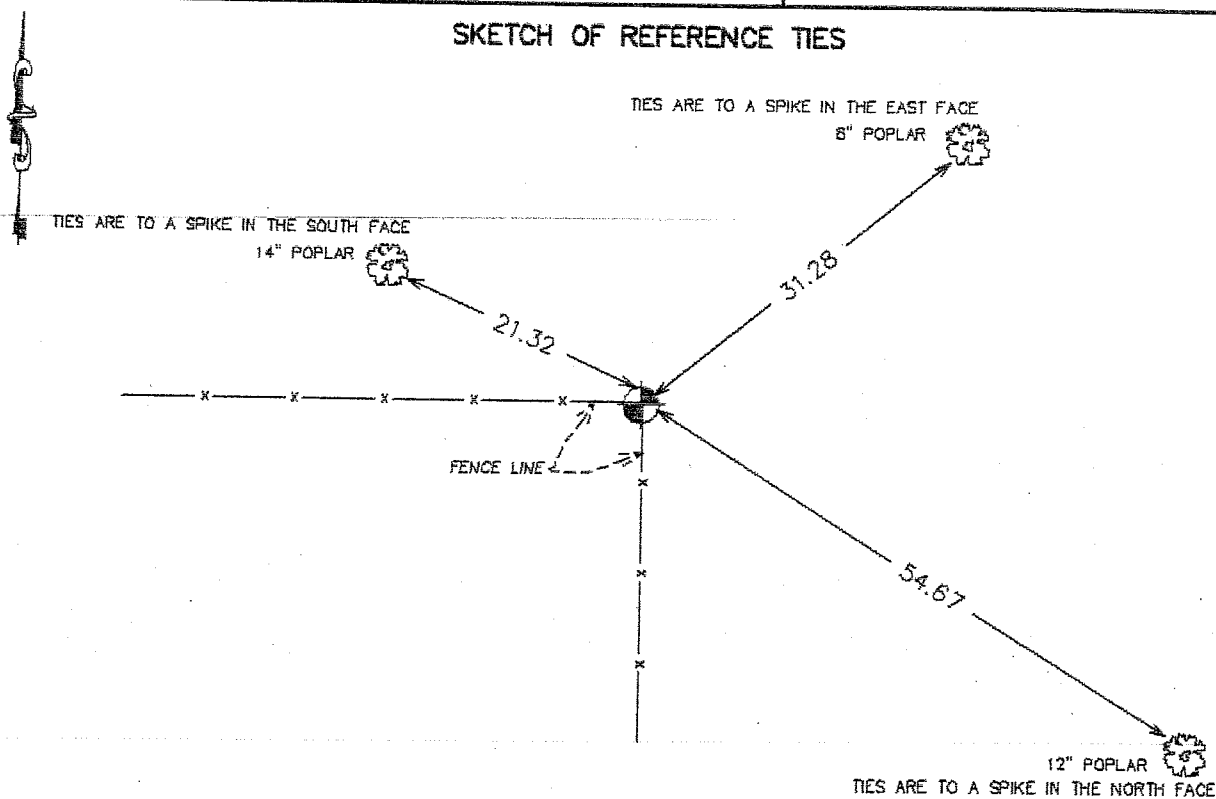
Northing= 142630.994

Easting= 409272.154

Note: NAD 1983, HARN 1996 Adjustment
coordinates are NOT compatible with
NAD 1983 coordinates

Note: 1 Meter=3937/1200 U.S. Survey Feet

SKETCH OF REFERENCE TIES



Statement of evidence relative to this corner location is on back of page.

I hereby certify that this document and the data contained herein was prepared by me or under my direct supervision.

Ernest L. Red
Signature

7-08-2003
Date

Registration No. 9808

Land Surveyor, Professional Engineer

County Surveyor, County Engineer

OFFICE OF THE COUNTY RECORDER

County of _____

I hereby certify that this document was filed in the County Recorder's office at _____ M. on the _____ day of _____ A.D., 20____

County Recorder _____

BY _____ Deputy

DOCUMENT NO. _____

STATEMENT OF EVIDENCE

Original Government corner was set in September 1855 by Silas Bernard.

All original bearing trees are gone.

September 18, 1903, John Nelson (the county surveyor) did a road survey from the Northwest corner of Section 30 to the Northeast corner of Section 30 and placed a sandstone monument at the North Quarter corner of Section 30.

In October 2001 we did a survey in Section 30 and found the sandstone with a chiseled "X" on top. This was at the intersection of a fence line going south and west from the corner. We left the sandstone in place and set a steel fence guard post alongside and then took new ties to the sandstone.

May 2003

We verified ties and established Kanabec County coordinates on monument with G.P.S. equipment.