

# CERTIFICATE OF LOCATION OF GOVERNMENT CORNER

Witness to the North Quarter Corner of Section 29, Township 39 North, Range 23 West,  
4th Principal Meridian, Kanabec County, State of Minnesota

At the corner location shown on the sketch:  
Set a 1/2" x 24" Iron Pipe marked Kroschel 44490 for a  
Witness corner to the North Quarter corner.

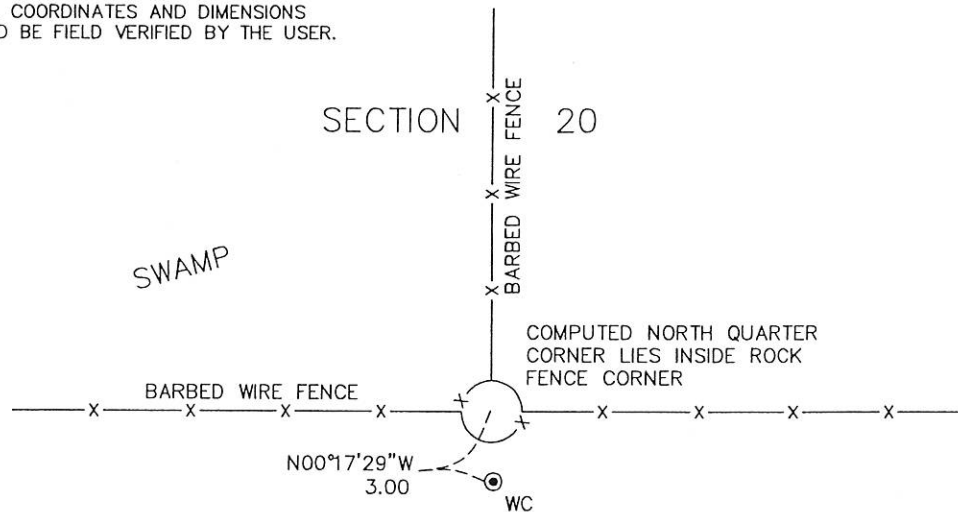
Kanabec County U.S. Survey Feet Coordinates  
NAD 1983, HARN 1996 Adjustment  
Obtained by RTK GPS observation  
WC Northing: 142559.8132  
WC Easting: 414459.2841

Note: NAD 1983, HARN 1996 Adjustment  
coordinates are NOT compatible with  
NAD 1983 coordinates  
Note: 1 Meter = 3937/1200 U.S. Survey Feet

## SKETCH OF REFERENCE TIES

KROSCHEL LAND SURVEYORS, INC.  
ASSUMES NO LIABILITY FOR THE ACCURACY  
OF THE GPS COORDINATES SHOWN HEREON.  
ALL COORDINATES AND DIMENSIONS  
SHOULD BE FIELD VERIFIED BY THE USER.

NOT TO SCALE



NO TIES AVAILABLE

SECTION 29

SWAMP



**Kroschel Land Surveyors, Inc.**

1639 Main Street North, Suite 6, Pine City, MN 55063  
Phone: 320-629-3267 Fax: 320-629-0176

Statement of evidence relative to this corner location is on back of page.

I hereby certify that this survey, plan, or report was prepared by me or under my direct supervision, that the United States public land survey monument record is correct and complete to the best of my knowledge and belief, and that I am a duly Licensed Land Surveyor under the laws of the State of Minnesota.

Tyler J. Kroschel      1-14-2014  
Tyler J. Kroschel      Date

License No. 44490  
 Land Surveyor       County Surveyor

**OFFICE OF THE COUNTY RECORDER**  
County of Kanabec

I hereby certify that this document was filed in the County Recorder's office at \_\_\_\_\_ .M. on the \_\_\_\_\_ day of \_\_\_\_\_ A.D., 20\_\_\_\_

County Recorder \_\_\_\_\_

By \_\_\_\_\_, Deputy

DOCUMENT NO. \_\_\_\_\_

114/51

Statement of Evidence:

In August of 1855 Deputy Surveyor Silas Barnard set a post to mark the North Quarter corner of Section 29, Township 39 North, Range 23 West of the 4th Principal Meridian.

All of the original Government evidence was searched for. None was found.

1901—County Surveyor John Nelson made a survey around Section 29. He shows the North Quarter post of Section 29 being reestablished halfway and on-line between the Northwest and Northeast corners.

1912—County Surveyor John Nelson made a survey in Section 29. He set Sandstone monuments at the interior 40 corners in Section 29. He does not state what type of monument was in place at the North Quarter corner.

In November 2013 I made a survey around Section 29, Township 39, Range 23 for Jeff Scullard to locate existing monuments, lines of occupation and establish search areas.

There is an old fence line running north, east, and west from this corner. The fence corner is within 2 feet of a lost position between the Northwest and Northeast corners of Section 29. I found Nelson's Sandstone monument with "x" at the center of Section 29. The old fence corner is on the northerly extension of the South Quarter corner and the Sandstone at the center of Section. I measure 2639.27 feet from the fence corner to the stone at the center of Section (Nelson: 2636.7 feet in 1901). The corner falls inside of a rock and wire fence corner, so I set a 1/2" x 24" Iron Pipe marked Kroschel 44490 3.00 feet south and on the north-south quarter line for a Witness to the North Quarter corner. Assigned Kanabec County Coordinates.

This location was determined to be the best available evidence of the original government corner monument location.



**Kroschel Land Surveyors, Inc.**

1639 Main Street North, Suite 6, Pine City, MN 55063  
Phone: 320-629-3267 Fax: 320-629-0176