

CERTIFICATE OF LOCATION OF GOVERNMENT CORNER

NORTHEAST Corner of Section 30, Township 39, Range 23, 4TH P.M.

STATE OF MINNESOTA, County of KANABEC

At the corner location shown on the sketch:
On 05/21/2003 Set a Kanabec County Monument.

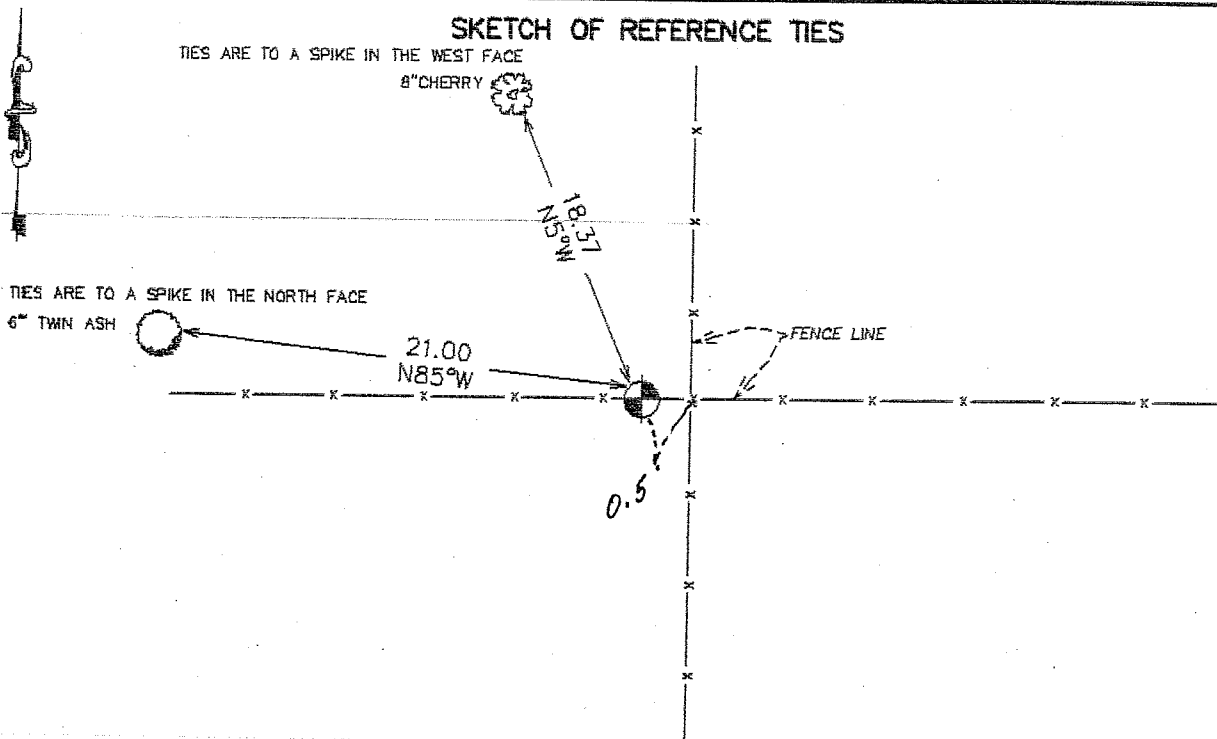
Kanabec County U.S. Survey Feet Coordinates
NAD 1983, HARN 1996 Adjustment
Obtained by RTK GPS Observation

Northing= 142611.090

Easting= 411922.264

Note: NAD 1983, HARN 1996 Adjustment
coordinates are NOT compatible with
NAD 1983 coordinates

Note: 1 Meter=3937/1200 U.S. Survey Feet



Statement of evidence relative to this corner location is on back of page.

I hereby certify that this document and the data contained herein was prepared by me or under my direct supervision.

Ernest L. Rud
Signature

7-08-2003
Date

Registration No. 9808

Land Surveyor, Professional Engineer

County Surveyor, County Engineer

OFFICE OF THE COUNTY RECORDER

County of _____

I hereby certify that this document was filed in the County Recorder's office at _____ M. on the _____ day of _____ A.D., 20 _____

County Recorder _____

BY _____ Deputy

DOCUMENT NO. _____

STATEMENT OF EVIDENCE

Original corner set by Silas Bernard in September 1855. No evidence of original corner or bearing trees remain. In September 1903 John Nelson did a road survey along the north line of Section 30 and said Northwest and Northeast section corners were good substantial corners. His notes also stated he set a sandstone monument at the North Quarter of Section 30 on October 9, 2001. E.G. Rud found said sandstone.

On May 21, 2003 Lowell Stromberg's father who owns the farm in the Northeast Quarter of Section 30 and testified that when his dad occupied the land there was evidence of an old road bed running along this line, but that a fence had been erected on the centerline +/- . At the Northeast corner of Section 30 there are fences running in all 4 directions. We had excavated at this location and found a pointed rock just west of the fence corner. We placed a Kanabec County Monument at this location and believe this is the best evidence for the position of the Northeast corner of Section 30.