

CERTIFICATE OF LOCATION OF GOVERNMENT CORNER

SOUTH QUARTER Corner of Section 30, Township 39, Range 23, 4TH P.M.
 STATE OF MINNESOTA, County of KANABEC

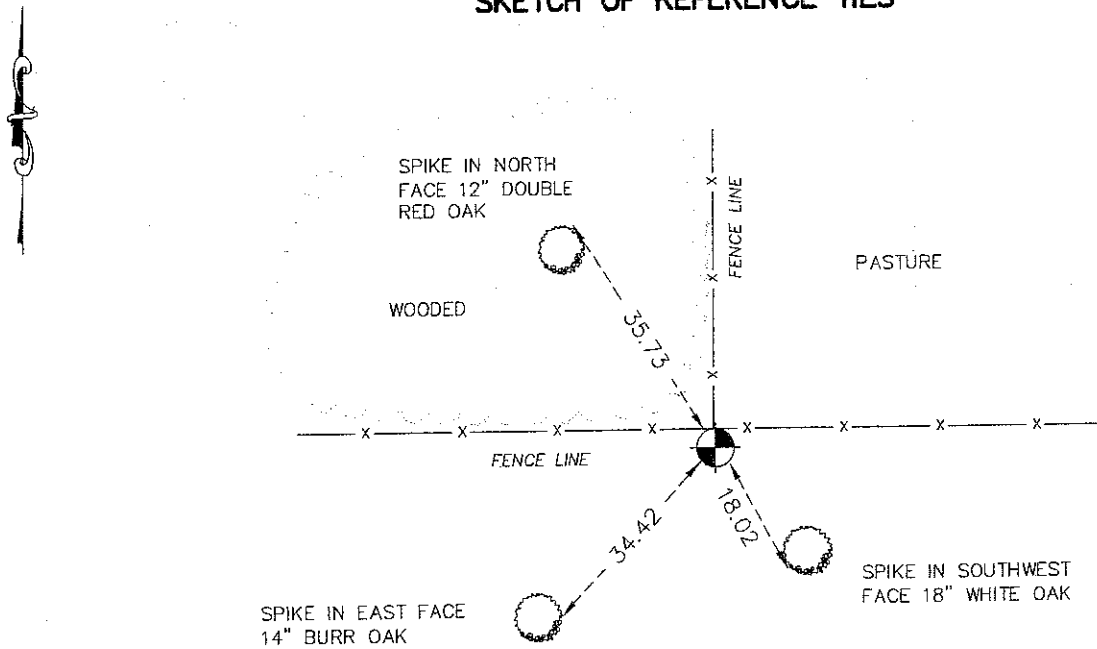
At the corner location shown on the sketch:
 FOUND A 7/8 INCH BY 24 INCH REBAR WITH AN ALUMINUM
 KANABEC COUNTY CAP

Kanabec County U.S. Survey Feet Coordinates
 NAD 1983, HARN 1996 Adjustment
 Obtained by RTK GPS Observation

Northing= 137351.13
 Easting= 409312.93

Note: NAD 1983, HARN 1996 Adjustment
 coordinates are NOT compatible with
 NAD 1983 coordinates
 Note: 1 Meter=3937/1200 U.S. Survey Feet

SKETCH OF REFERENCE TIES



Statement of evidence relative to this corner location is on back of page.

I hereby certify that this document and the data contained herein was prepared by me or under my direct supervision.

Ernst Rud 9-30-2008
 Signature Date

Registration No. Minn No 9808

- Land Surveyor, Professional Engineer
 County Surveyor, County Engineer

OFFICE OF THE COUNTY RECORDER

County of _____

I hereby certify that this document was filed in the County Recorder's office at _____ M. on the

_____ day of _____ A.D., 20__

County Recorder _____

BY _____ Deputy

DOCUMENT NO. _____

SOUTH QUARTER CORNER SECTION 30, TOWNSHIP 39, RANGE 23

STATEMENT OF EVIDENCE

The original corner was set by Deputy Surveyor Silas Barnard in September 1855. No visible evidence remains for the corner or bearing trees.

In book A, page 38 & 39 John Nelson recorded a survey along the North line of Section 31 from the NW corner to the N 1/4 corner of Sec. 31 and recorded a distance of 39.50 chains or 2607 feet. It does not state what was set for the corner and the two bearing trees noted are gone. John Nelson did not measure to the NE corner of Sec. 31 so a distance comparison can not be made.

In Oct. 2001 E. G. Rud and Sons ran a survey around Sec. 30 and set a KCM at the fence intersections for this corner. The distance to the NW corner was measured to be 2632.16 compared to 2607 by John Nelson. John Nelson also measured 2636.04 along the West line of NW1/4 where M.B. Rude measured 2661.36 feet. Both distances being about 25 feet longer than John Nelson's.

Hand excavations was done at fence intersection and 25 feet west. No evidence to the corner could be found. Therefore the fence lines were considered to be the lead evidence for the location of the corner. Both Gary Olson and Lowell Stromback, long time land owners in Section 30 and 31 have always believed the fence corner to be the section corner. KCC were established on this location.