

# CERTIFICATE OF LOCATION OF GOVERNMENT CORNER

North Quarter Corner of Section 32, Township 39 North, Range 23 West,  
4th Principal Meridian, Kanabec County, State of Minnesota

At the corner location shown on the sketch:  
Set a 1/2" x 2" Iron Pipe marked Kroschel 44490 in place  
of a found Mag Nail.

Kanabec County U.S. Survey Feet Coordinates  
NAD 1983, HARN 1996 Adjustment  
Obtained by RTK GPS observation  
Northing: 137276.4930  
Easting: 414486.1527

Note: NAD 1983, HARN 1996 Adjustment  
coordinates are NOT compatible with  
NAD 1983 coordinates  
Note: 1 Meter = 3937/1200 U.S. Survey Feet

## SKETCH OF REFERENCE TIES

KROSCHEL LAND SURVEYORS, INC.  
ASSUMES NO LIABILITY FOR THE ACCURACY  
OF THE GPS COORDINATES SHOWN HEREON.  
ALL COORDINATES AND DIMENSIONS  
SHOULD BE FIELD VERIFIED BY THE USER.

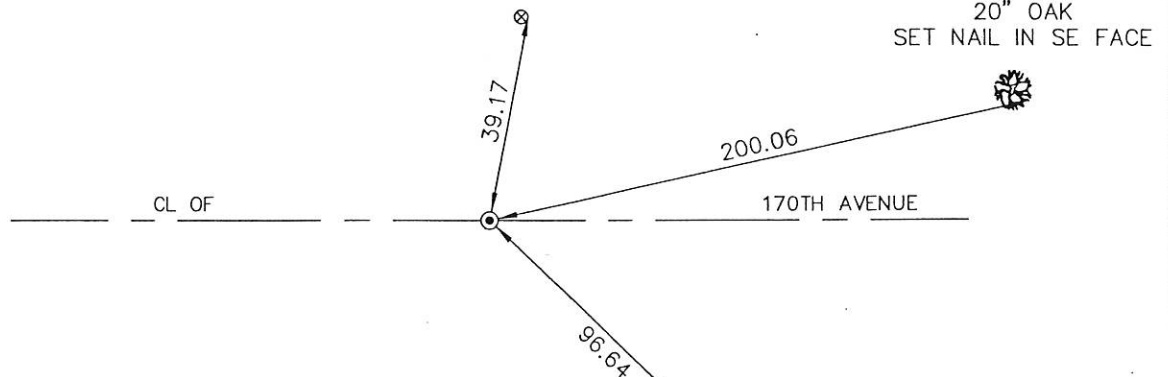
NOT TO SCALE



SECTION 29

POWER POLE ECE 47539  
SET NAIL IN E. FACE

20" OAK  
SET NAIL IN SE FACE



SECTION 32

3" OAK  
SET NAIL IN NE FACE



**Kroschel Land Surveyors, Inc.**

1639 Main Street North, Suite 6, Pine City, MN 55063  
Phone: 320-629-3267 Fax: 320-629-0176

114/50

Statement of evidence relative to this corner location is on back of page.

I hereby certify that this survey, plan, or report was prepared by me or under my direct supervision, that the United States public land survey monument record is correct and complete to the best of my knowledge and belief, and that I am a duly Licensed Land Surveyor under the laws of the State of Minnesota.

\_\_\_\_\_ 1-14-2014  
Tyler J. Kroschel Date

License No. 44490  
 Land Surveyor       County Surveyor

**OFFICE OF THE COUNTY RECORDER**  
County of Kanabec

I hereby certify that this document was filed in the County Recorder's office at \_\_\_\_\_ .M. on the \_\_\_\_\_ day of \_\_\_\_\_ A.D., 20\_\_\_\_

County Recorder \_\_\_\_\_  
By \_\_\_\_\_, Deputy

DOCUMENT NO. \_\_\_\_\_

Statement of Evidence:

In August of 1855 Deputy Surveyor Silas Barnard set a post to mark the North Quarter corner of Section 32, Township 39 North, Range 23 West of the 4th Principal Meridian.

All of the original Government evidence was searched for. None was found.

1901—County Surveyor John Nelson made a survey around Section 29. He shows the South Quarter corner of Section 29 being halfway and on—line between the Southwest and Southeast corners.

1912—County Surveyor John Nelson made a survey in Section 29. He set a stake with stones around it at the South Quarter corner, on—line and halfway between the Southwest and Southeast corners. He also set Sandstone monuments at the interior 40 corners in Section 29.

1921—A Township Supervisor's Road Order is filed in the Office of the County Auditor opening a road between Sections 29 and 32. The road was not surveyed.

In November 2013 I made a survey around Section 29, Township 39, Range 23 for Jeff Scullard to locate existing monuments, lines of occupation and establish search areas.

On 11/15/2013 I found a Mag Nail at the surface of the paved highway. The Mag Nail fit on—line and halfway between the Southwest and Southeast corners. I also found two of Nelson's Sandstone monuments with "x" north of this corner. The first was a quarter mile north and the second was at the center of Section 29. The first stone was approximately 1.7 feet west of a straight line between the found mag nail and the stone at the center of section. It appears that the stone may have been moved from construction of a fence corner. The fence running south from this stone is on—line between the found Mag Nail and the stone at the center of section. I measure 1323.2 feet from the found Mag Nail to the first stone. I measure 1323.9 feet from this stone to the stone at the center of section. I replaced the found Mag Nail with a 1/2" x 2" Iron Pipe marked Kroschel 44490. Established reference ties and assigned Kanabec County Coordinates.

This location was determined to be the best available evidence of the original government corner monument location. No excavation was made at this location.



**Kroschel Land Surveyors, Inc.**

1639 Main Street North, Suite 6, Pine City, MN 55063  
Phone: 320-629-3267 Fax: 320-629-0176