

CERTIFICATE OF LOCATION OF GOVERNMENT CORNER

EAST QUARTER Corner of Section 05, Township 39, Range 23, 4TH P.M.

STATE OF MINNESOTA, County of KANABEC

At the corner location shown on the sketch:
²²²⁵
 IN SET A KANABEC COUNTY MONUMENT
 AND ESTABLISHED KANABEC COUNTY COORDINATES ON ITS LOCATION.

Kanabec County U.S. Survey Feet Coordinates
 NAD 1983, HARN 1996 Adjustment
 Obtained by RTK GPS Observation

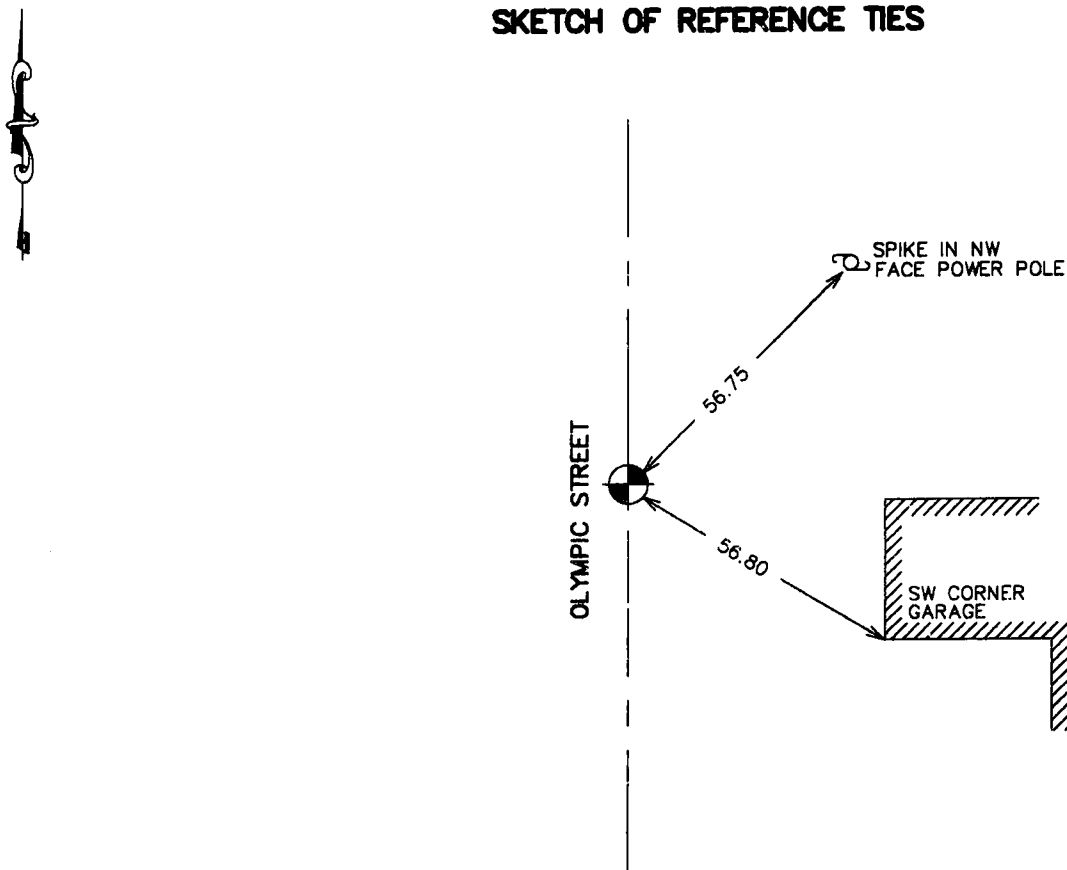
Northing= 161153.08

Easting= 417207.76

Note: NAD 1983, HARN 1996 Adjustment
 coordinates are NOT compatible with
 NAD 1983 coordinates

Note: 1 Meter=3937/1200 U.S. Survey Feet

SKETCH OF REFERENCE TIES



Statement of evidence relative to this corner location is on back of page.

I hereby certify that this document and the data contained herein was prepared by me or under my direct supervision.

Ernest L. Rud July 15, 2006
Signature Date

Registration No. Minn No 9808

Land Surveyor, Professional Engineer
 County Surveyor, County Engineer

OFFICE OF THE COUNTY RECORDER

County of Kanabec

I hereby certify that this document was filed in the County Recorder's office at 8:00 A M. on the

20th day of July A.D., 2006

County Recorder Rhonda A Olson

BY _____ Deputy

DOCUMENT NO. _____

STATEMENT OF EVIDENCE

THE ORIGINAL CORNER WAS SET BY GOV'T. SURVEYOR SILAS BARNARD IN SEPTEMBER 1855. NO EVIDENCE FOR THE CORNER OR BEARING TREES REMAIN. ON JUNE 7TH 1902 JOHN NELSON MADE A SURVEY OF SECTION 5 AND AT THIS CORNER DID NOT TAKE TIES OR INDICATE IF A CORNER WAS SET.

IN OCTOBER 2005 E.G. RUD MADE A SURVEY OF SECTION 5 TO LOCATE EXISTING MONUMENTATION AND TIE IN LINES OF OCCUPATION.

ON OCTOBER 6, 2005 KANABEC COUNTY HIGHWAY DEPT. MADE AN EXCAVATION ON THE CENTERLINE OF A GRAVEL ROAD.

NO EVIDENCE WAS FOUND IN THE EXCAVATION.

E.G. RUD SET THIS CORNER AT A PROPORTIONATE MEASUREMENT BETWEEN THE NE AND SE CORNERS OF SECTION 5 AND ON THE CENTERLINE OF THE COUNTY ROAD.

KANABEC COUNTY COORDINATES WERE ESTABLISHED ON THIS POSITION USING G.P.S EQUIPMENT.