

CERTIFICATE OF LOCATION OF GOVERNMENT CORNER

SOUTH QUARTER Corner of Section 9, Township 39, Range 23, 4TH P.M.

STATE OF MINNESOTA, County of KANABEC

At the corner location shown on the sketch:
On 10/23/2002 Set a KANABEC COUNTY MONUMENT.

Kanabec County U.S. Survey Feet Coordinates
NAD 1983, HARN 1996 Adjustment
Obtained by RTK GPS Observation

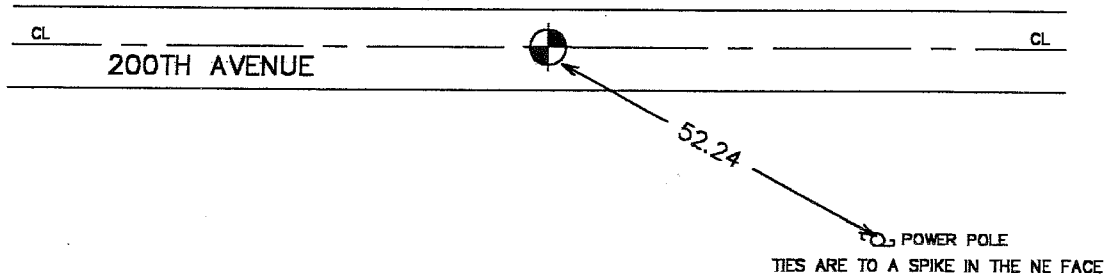
Northing= 153146.711

Easting= 419685.785

Note: NAD 1983, HARN 1996 Adjustment
coordinates are NOT compatible with
NAD 1983 coordinates

Note: 1 Meter=3937/1200 U.S. Survey Feet

SKETCH OF REFERENCE TIES



Statement of evidence relative to this corner location is on back of page.

I hereby certify that this document and the data contained herein was prepared by me or under my direct supervision.

Ernest G. Rud 1-21-2003
Signature Date

Registration No. 9808

Land Surveyor, Professional Engineer

County Surveyor, County Engineer

OFFICE OF THE COUNTY RECORDER

County of _____

I hereby certify that this document was filed in the County Recorder's office at _____ M. on the _____ day of _____ A.D., 20__

County Recorder _____

BY _____ Deputy

DOCUMENT NO. _____

STATEMENT OF EVIDENCE

Original corner was set in September 1855 by Silas Barnard. Original bearing no longer remain.

In 1898 Tom Vickery measured South line of Section 9 and came up with 78.72 chains or 5195.52 feet. In 1901 John Nelson did a road survey between Sections 9 and 16, he measured 79.79 chains or 5266.14 feet. In 1963 Gerald Sullivan measured the South line of Section 9 to be 5185.6 feet.

On October 23, 2002 we excavated a 20 foot by 10 foot by 3 foot deep hole at the location shown on Sullivans survey. We found a pointed rock 16 inches long by approximately 3 inches to 5 inches in diameter with no markings on it. This fit Sullivans measurements. We set a Kanabec County Monument on line and at the prorated distances, ~~This fit the centerline of the prorated distances.~~ This fit the centerline of the east-west road and an old occupation line to the north. We measured the South line of Section 9 to be 5183 feet. We found John Nelson to be long on this line by 83 feet, while on the north line we found him to be short by 33 feet. Questionable.