

CERTIFICATE OF LOCATION OF GOVERNMENT CORNER

NORTHEAST Corner of Section 17, Township 39, Range 23, 4TH P.M.
STATE OF MINNESOTA, County of KANABEC

At the corner location shown on the sketch:
On 10/23/2002 Found a 1/2" x 2" IRON BAR.

Kanabec County U.S. Survey Feet Coordinates
NAD 1983, HARN 1996 Adjustment
Obtained by RTK GPS Observation

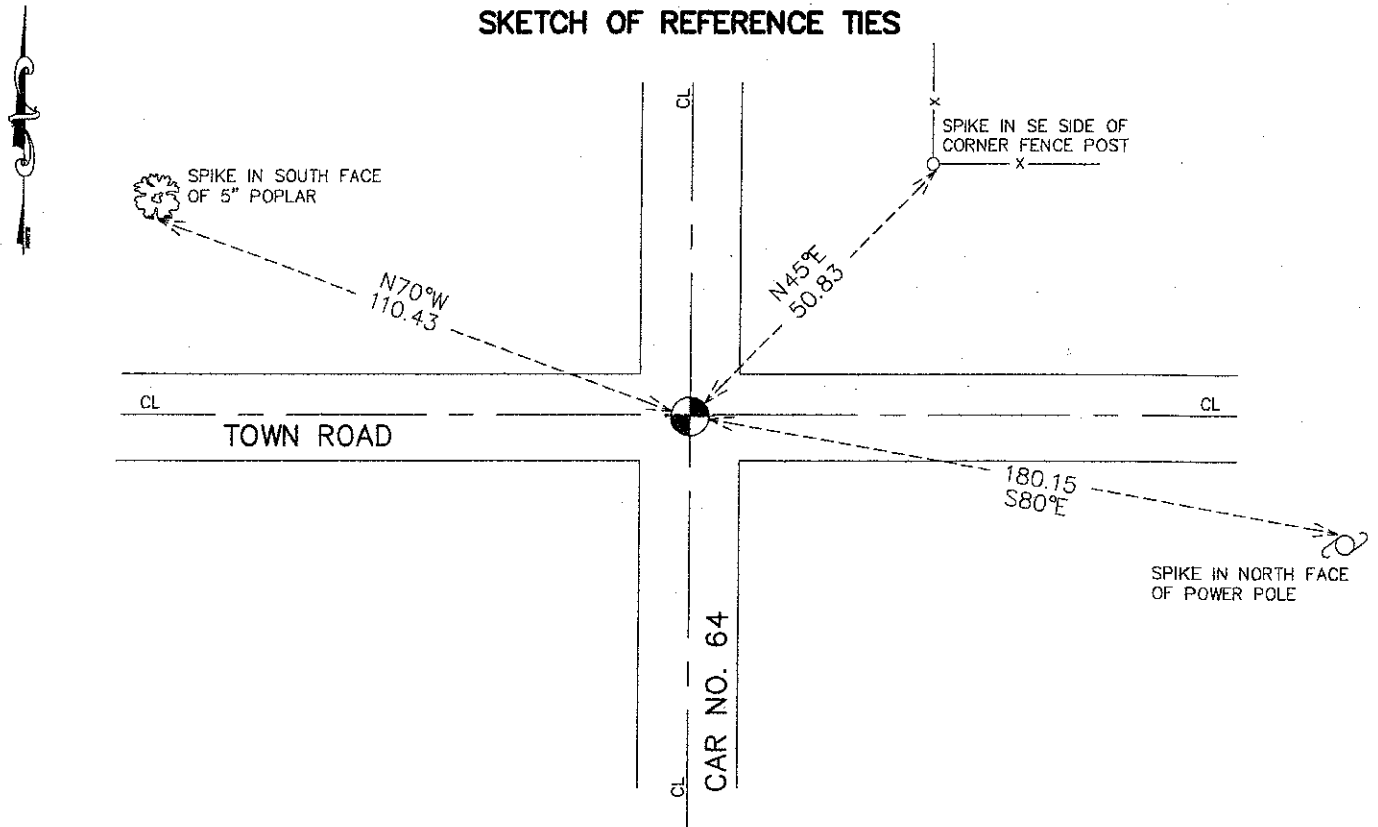
Northing= 153172.656

Easting= 417093.471

Note: NAD 1983, HARN 1996 Adjustment
coordinates are NOT compatible with
NAD 1983 coordinates

Note: 1 Meter=3937/1200 U.S. Survey Feet

SKETCH OF REFERENCE TIES



Statement of evidence relative to this corner location is on back of page.

I hereby certify that this document and the data contained herein was prepared by me or under my direct supervision.

Ernst J. Rub
Signature

12-21-2011
Date

Registration No. 9808

Land Surveyor, [] Professional Engineer

[] County Surveyor, [] County Engineer

OFFICE OF THE COUNTY RECORDER

County of _____

I hereby certify that this document was filed in the County Recorder's office at _____ M. on the _____ day of _____ A.D., 20 _____

County Recorder _____

BY _____ Deputy

DOCUMENT NO. _____

NE CORNER, SEC. 17, T39, R23

STATEMENT OF EVIDENCE

THE ORIGINAL GOVERNMENT CORNER WAS SET BY DEPUTY SURVEYOR SILAS BARNARD IN SEPT 1855 AND 4 BEARING TREES NOTED AS:

- 8" TAMARACK @ 80 LINKS BEARING N25°W**
- 12" TAMARACK @ 47 LINKS BEARING S20°W**
- 12" BLACK ASH @ 125 LINKS BEARING N10°E**
- 15" OAK @ 142 LINKS BEARING S50°E**

NO VISIBLE EVIDENCE FOR THE CORNER OR ACCESSORIES COULD BE FOUND.

CERTIFICATE OF LOCATION NO. 230 DATED JUNE 26, 1970 STATED HE FOUND A 1/2" BY 2" IRON BAR AT THE CENTERLINE OF ROADS AND ACCEPTED THIS POSITION.

GERALD SULLIVAN RECORDED A SURVEY IN 1963 FOR SEC. 9 AND A 1/2" BY 2" IRON BAR WAS ALSO FOUND AT THE W1/4 CORNER OF SEC. 9. THE DISTANCES TODAY AGREE VERY WELL WITH SULLIVAN'S MEASURED DISTANCES.

IN 2003, E.G. RUD AND SONS FOUND THIS IRON BAR AND ESTABLISHED KANABEC COUNTY COORDINATES ON THIS POSITION. ON NOVEMBER 14, 2011, E.G. RUD AND SONS EXPOSED THIS IRON BAR, TOOK NEW TIES AND VERIFIED KANABEC COUNTY COORDINATES.