

CERTIFICATE OF LOCATION OF GOVERNMENT CORNER

EAST QUARTER Corner of Section 17, Township 39, Range 23, 4TH P.M.

STATE OF MINNESOTA, County of KANABEC

At the corner location shown on the sketch:
On 10/23/2002 Found a 7/8" x 24" CAPPED REBAR.

Kanabec County U.S. Survey Feet Coordinates
NAD 1983, HARN 1996 Adjustment
Obtained by RTK GPS Observation

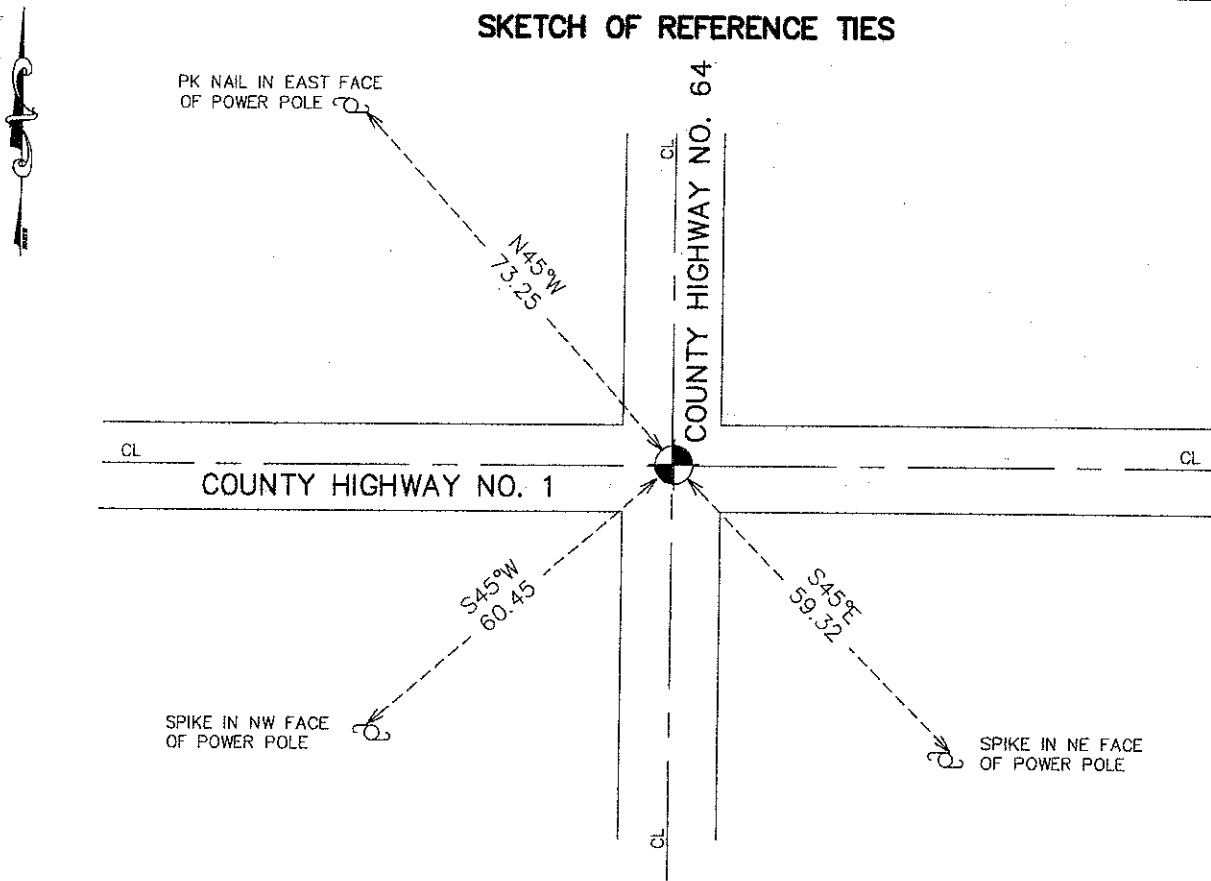
Northing= 150503.799

Easting= 417057.606

Note: NAD 1983, HARN 1996 Adjustment
coordinates are NOT compatible with
NAD 1983 coordinates

Note: 1 Meter=3937/1200 U.S. Survey Feet

SKETCH OF REFERENCE TIES



Statement of evidence relative to this corner location is on back of page.

I hereby certify that this document and the data contained herein was prepared by me or under my direct supervision.

Ernest Blund 12-21-2011
Signature Date

Registration No. 9808

Land Surveyor, Professional Engineer

County Surveyor, County Engineer

OFFICE OF THE COUNTY RECORDER

County of _____

I hereby certify that this document was filed in the County Recorder's office at _____ M. on the _____ day of _____ A.D., 20____

County Recorder _____

BY _____ Deputy

DOCUMENT NO. _____

E1/4 CORNER, SEC. 17, T39, R23

STATEMENT OF EVIDENCE

ALL OF THE ORIGINAL BEARING TREES ARE NOW GONE.

THIS CORNER FALLS IN THE INTERSECTION OF COUNTY HIGHWAYS NO. 1 AND 64.

RE-SURVEY DATA ON FILE:

IN 1932, CHARLES HANDSHU, A SURVEYOR, SURVEY RECORDS ON FILE AT THE AT THE COUNTY RECORDER'S OFFICE SHOW AN IRON PIN AT THIS CORNER.

IN 1970, N.C. HOIUM, A LAND SURVEYOR, FOUND A 1/2" IRON PIPE AT THE INTERSECTION OF ROADS AND REPLACES IT WITH A CAST IRON MONUMENT AND FILED A CORNER CERTIFICATE.

ON OCTOBER 31, 1986, M.B. RUDE FOUND A 1/2" IRON PIPE BELOW THE SURFACE THAT FIT HOIUM'S REFERENCE TIES. RUDE OFFSET THE PIPE AND MADE AN EXCAVATION WITH THE COUNTY BACKHOE. IT APPEARED THAT THE AREA HAD BEEN DUG UP TO REMOVE FROST BOIL AND THE CAST IRON MONUMENT MUST HAVE BEEN REMOVED.

ON NOVEMBER 14, 2011, E.G. RUD AND SONS RESET THIS CORNER USING ONE REMAINING TIE AND KANABEC COUNTY COORDINATES PREVIOUSLY OBTAINED ON THIS CORNER. THE PREVIOUS CORNER WAS DESTROYED WHEN COUNTY ROAD 1 WAS MILLED AND OVERLAID. NEW TIES WERE TAKEN.