

# CERTIFICATE OF LOCATION OF GOVERNMENT CORNER

North Quarter Corner of Section 28, Township 39 North, Range 23 West,  
4th Principal Meridian, Kanabec County, State of Minnesota

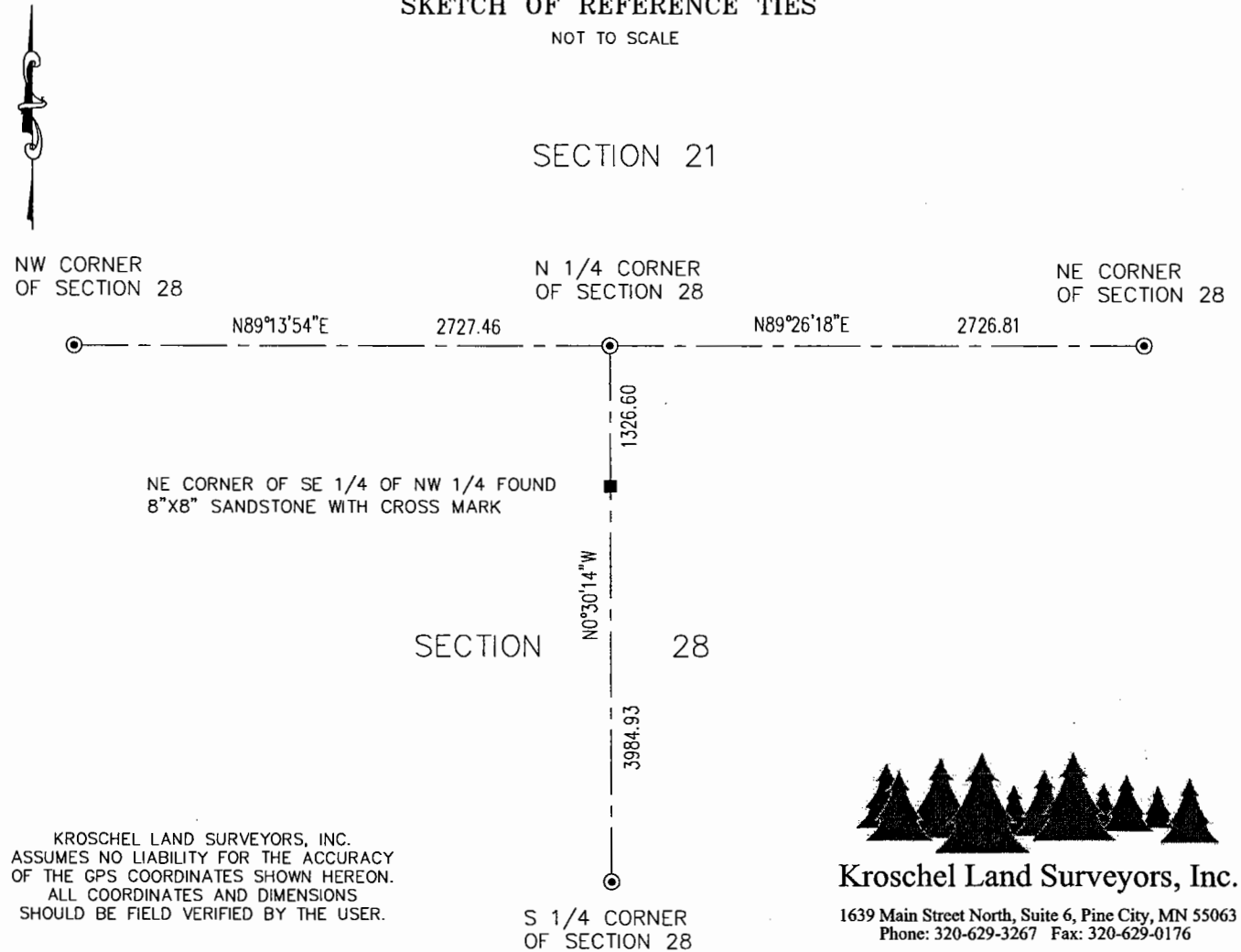
At the corner location shown on the sketch:  
On 9/22/2022, set a 7/8" x 24" Rebar Monument  
with Aluminum Cap.

Kanabec County U.S. Survey Feet Coordinates  
NAD 1983, HARN 1996 Adjustment  
Obtained by RTK GPS observation  
Northing: 142547.3851  
Easting: 419725.5004

Note: NAD 1983, HARN 1996 Adjustment  
coordinates are NOT compatible with  
NAD 1983 coordinates  
Note: 1 Meter = 3937/1200 U.S. Survey Feet

## SKETCH OF REFERENCE TIES

NOT TO SCALE



KROSCHEL LAND SURVEYORS, INC.  
ASSUMES NO LIABILITY FOR THE ACCURACY  
OF THE GPS COORDINATES SHOWN HEREON.  
ALL COORDINATES AND DIMENSIONS  
SHOULD BE FIELD VERIFIED BY THE USER.



**Kroschel Land Surveyors, Inc.**

1639 Main Street North, Suite 6, Pine City, MN 55063  
Phone: 320-629-3267 Fax: 320-629-0176

Statement of evidence relative to this corner location is on back of page.

I hereby certify that this report was prepared by me  
or under my direct supervision, that the United  
States public land survey monument record is  
correct and complete to the best of my knowledge  
and belief, and that I am a duly Licensed Land  
Surveyor under the laws of the State of Minnesota.

Tyler J. Kroschel, County Surveyor

2-24-2023

Date

License No. 44490

### OFFICE OF THE COUNTY RECORDER

County of Kanabec

I hereby certify that this document was filed in the  
County Recorder's office at \_\_\_\_\_ .M. on the  
\_\_\_\_\_ day of \_\_\_\_\_ A.D., 20\_\_\_\_

County Recorder \_\_\_\_\_, Deputy

DOCUMENT NO. \_\_\_\_\_

Statement of Evidence:

In October of 1855, Deputy Surveyor Silas Barnard set a post to mark the North Quarter Corner of Section 28, Township 39 North, Range 23 West, 4th Principal Meridian.

Reference ties were taken to:

7 inch Tamarack at South 40 degrees East a distance of 64 links  
6 inch Tamarack at North 34 degrees East a distance of 25 links

All of the original Government corner evidence was searched for. None was found.

1897— Surveyor Thomas Vickery made a road survey in Section 21, Township 39, Range 23, beginning at the southeast corner of Section 21, per records on file at the County Highway Department (Book A of Surveys, page 140). Vickery measured 1354.98 feet along the South line of the Southeast Quarter of the Southeast Quarter of Section 21, Township 39, Range 23, (I measure 1363.40 feet).

1903— Surveyor John Nelson made a survey in Section 28, Township 39, Range 23, per records on file at the County Highway Department (Book 2 of 2 of Surveys, page 24). Nelson's survey shows he set a monument at the NE corner of the SE 1/4 of the NW 1/4 of Section 28 and measured a distance of 1326.60 feet to the North Quarter corner of Section 28. Nelson's survey shows a distance of 2720.52 feet along the North line of the Northeast Quarter of Section 28 (I measure 2726.81 feet) and a distance of 2720.52 feet along the North line of the Northwest Quarter Section 28 (I measure 2727.46 feet).

In September 2022, I made a survey around Section 21, Township 39 North, Range 23 West, 4th Principal Meridian for Pheasants Forever to locate existing monuments and to establish search areas.

On 9/23/2022, I found an 8" x 8" sandstone monument with a cross mark at the northeast corner of the SE 1/4 of the NW 1/4 of Section 28. I made a search at the North Quarter corner of Section 28 with a metal locator and by probing with a machete at a lost position and also by extending a line northerly from the South Quarter corner of Section 28 through the found sandstone monument, a distance of 1326.60 North of the found sandstone monument. No evidence of the corner was found in the search.

I accepted the found sandstone monument as being on the North—South Quarter line and extended the North—South Quarter line Northerly from the found sandstone monument Nelson's distance of 1326.60 feet and set a 7/8" x 24" Rebar with an aluminum cap at the North Quarter corner of Section 28. This location fits an old stone fence running easterly from this corner. This position was determined to be the best available evidence of the original corner monument location. Assigned Kanabec County Coordinates.



**Kroschel Land Surveyors, Inc.**

1639 Main Street North, Suite 6, Pine City, MN 55063  
Phone: 320-629-3267 Fax: 320-629-0176