

CERTIFICATE OF LOCATION OF GOVERNMENT CORNER

Northeast Corner of Section 29, Township 39 North, Range 23 West,
4th Principal Meridian, Kanabec County, State of Minnesota

At the corner location shown on the sketch:
Set large magnet on top of 3.5' x 3.5' Sandstone with "x"
mark, approx. 1.5 feet below the road surface.

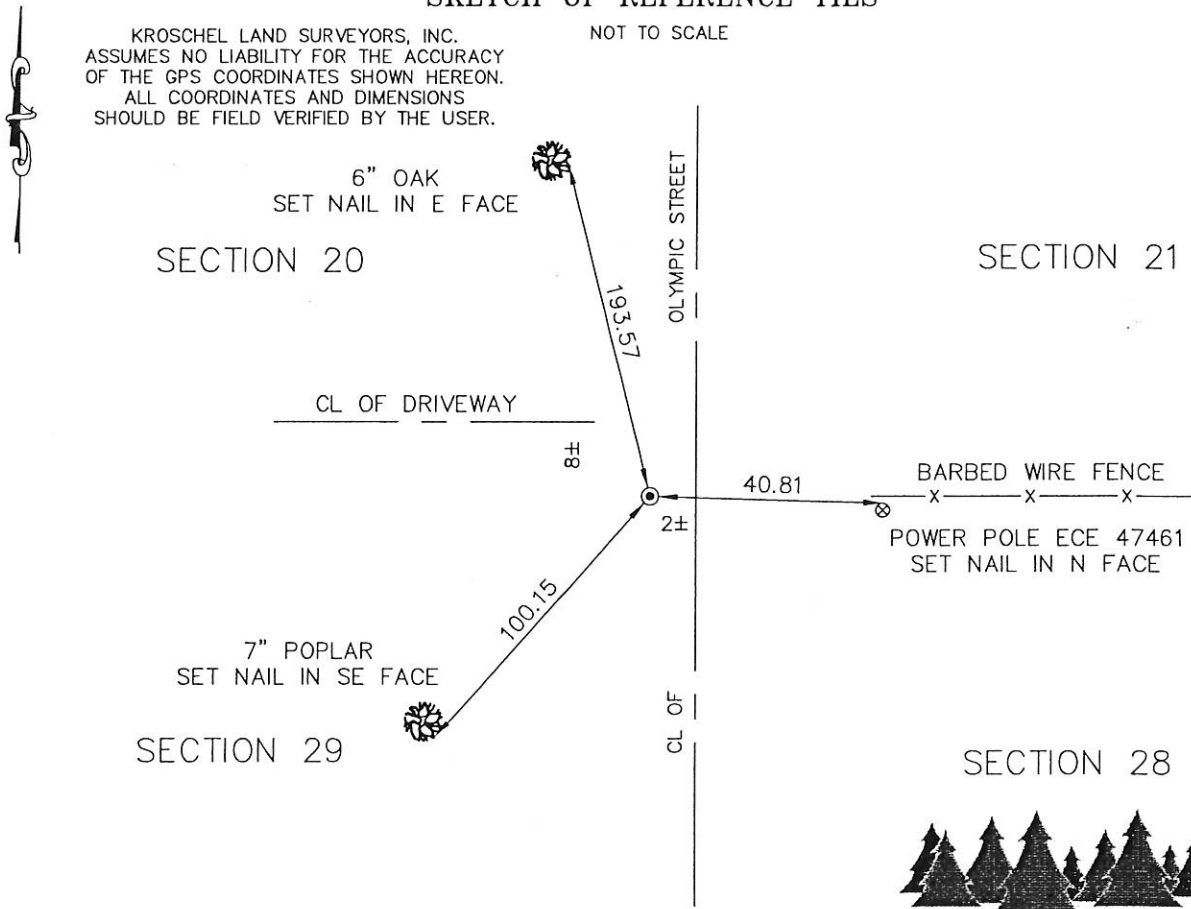
Kanabec County U.S. Survey Feet Coordinates
NAD 1983, HARN 1996 Adjustment
Obtained by RTK GPS observation
Northing: 142510.8078
Easting: 416998.2900

Note: NAD 1983, HARN 1996 Adjustment
coordinates are NOT compatible with
NAD 1983 coordinates
Note: 1 Meter = 3937/1200 U.S. Survey Feet

SKETCH OF REFERENCE TIES

NOT TO SCALE

KROSCHEL LAND SURVEYORS, INC.
ASSUMES NO LIABILITY FOR THE ACCURACY
OF THE GPS COORDINATES SHOWN HEREON.
ALL COORDINATES AND DIMENSIONS
SHOULD BE FIELD VERIFIED BY THE USER.



114/51



Kroschel Land Surveyors, Inc.

1639 Main Street North, Suite 6, Pine City, MN 55063
Phone: 320-629-3267 Fax: 320-629-0176

Statement of evidence relative to this corner location is on back of page.

I hereby certify that this survey, plan, or report was prepared by me or under my direct supervision, that the United States public land survey monument record is correct and complete to the best of my knowledge and belief, and that I am a duly Licensed Land Surveyor under the laws of the State of Minnesota.

Tyler J. Kroschel 1-14-2014
Tyler J. Kroschel Date
License No. 44490
 Land Surveyor County Surveyor

OFFICE OF THE COUNTY RECORDER
County of Kanabec

I hereby certify that this document was filed in the County Recorder's office at _____ .M. on the _____ day of _____ A.D., 20____
County Recorder _____
By _____, Deputy
DOCUMENT NO. _____

Statement of Evidence:

In August of 1855 Deputy Surveyor Silas Barnard set a post to mark the Northeast corner of Section 29, Township 39 North, Range 23 West of the 4th Principal Meridian.

All of the original Government evidence was searched for. None was found.

1895—Thomas Vickery made a survey around Section 28. He does not state what type of monument was in place at the Northwest corner of Section 28.

1900—Thomas Vickery made a survey along the west line of Section 28. He does not state what type of monument was in place at the Northwest corner of Section 28.

1901—County Surveyor John Nelson made a survey around Section 29. He does not state what type of monument was in place at the Northeast corner of Section 29.

1903—County Surveyor John Nelson made a survey around Section 28. He states "the west boundary line of this section having been previously established". He set a Sandstone monument at the Northwest corner of Section 28.

In November 2013 I made a survey around Section 29, Township 39, Range 23 for Jeff Scullard to locate existing monuments, lines of occupation and establish search areas.

On 11/15/2013 we made an 18' x 15' x 1.5' deep excavation with a front end loader at the center of the gravel road and fence line east. Approximately 1.5 feet below the gravel surface we found a 3.5' x 3.5' Sandstone with "x" mark. The stone was too large to move so we set a large magnet on top of the "x" mark. Established reference ties and assigned Kanabec County coordinates.

This location was determined to be the best available evidence of the original government corner monument location.



Kroschel Land Surveyors, Inc.

1639 Main Street North, Suite 6, Pine City, MN 55063
Phone: 320-629-3267 Fax: 320-629-0176