

CERTIFICATE OF LOCATION OF GOVERNMENT CORNER

North Quarter Corner of Section 33, Township 39 North, Range 23 West,
4th Principal Meridian, Kanabec County, State of Minnesota

At the corner location shown on the sketch:
On 9/22/2022 set a large Mag Spike in new blacktop surface.

Kanabec County U.S. Survey Feet Coordinates
NAD 1983, HARN 1996 Adjustment
Obtained by RTK GPS observation
Northing: 137236.0640
Easting: 419772.2138

Note: NAD 1983, HARN 1996 Adjustment
coordinates are NOT compatible with
NAD 1983 coordinates
Note: 1 Meter = 3937/1200 U.S. Survey Feet

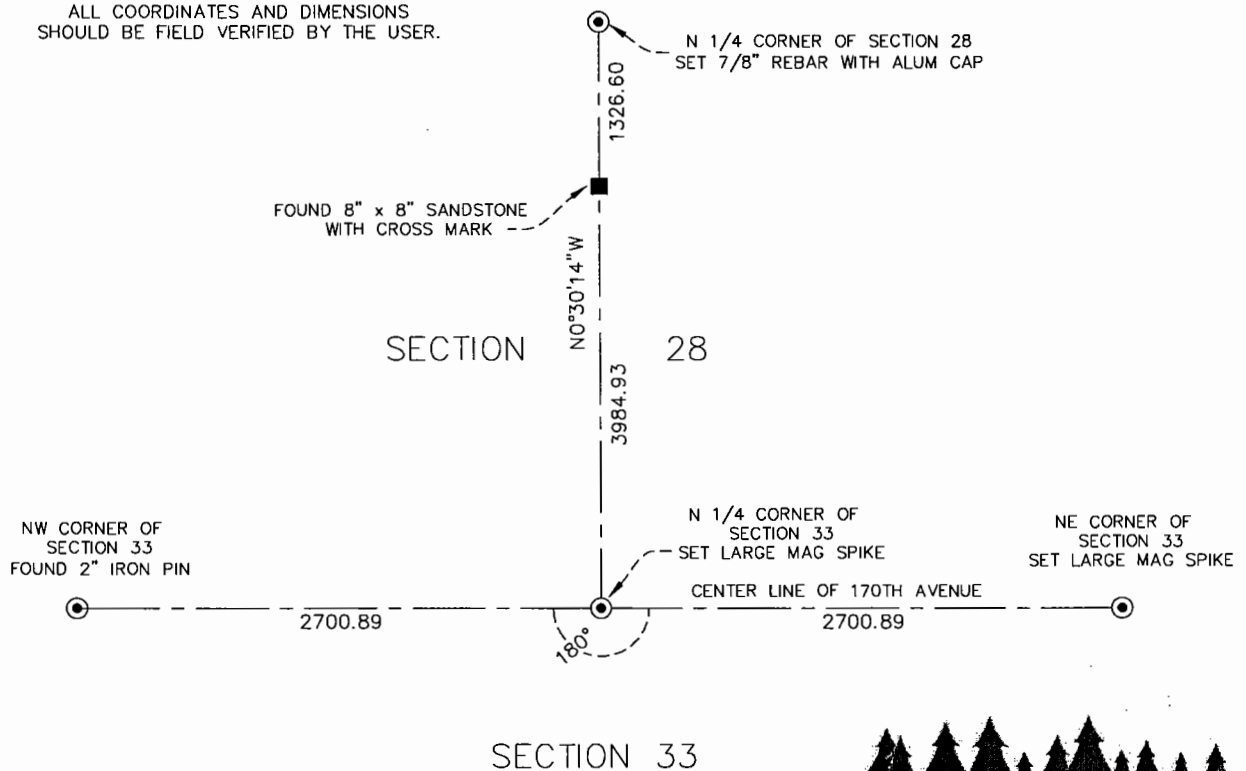
SKETCH OF REFERENCE TIES



KROSCHEL LAND SURVEYORS, INC.
ASSUMES NO LIABILITY FOR THE ACCURACY
OF THE GPS COORDINATES SHOWN HEREON.
ALL COORDINATES AND DIMENSIONS
SHOULD BE FIELD VERIFIED BY THE USER.

NOT TO SCALE

THE BASIS OF BEARINGS FOR THIS
DRAWING IS THE KANABEC COUNTY
COORDINATE SYSTEM BY MNDOT,
NAD 1983, HARN 1996 ADJUSTMENT



Kroschel Land Surveyors, Inc.

1639 Main Street North, Suite 6, Pine City, MN 55063
Phone: 320-629-3267 Fax: 320-629-0176

Statement of evidence relative to this corner location is on back of page.

I hereby certify that this report was prepared by me or under my direct supervision, that the United States public land survey monument record is correct and complete to the best of my knowledge and belief, and that I am a duly Licensed Land Surveyor under the laws of the State of Minnesota.

Tyler J. Kroschel, County Surveyor

License No. 44490

2/15/2023
Date

OFFICE OF THE COUNTY RECORDER
County of Kanabec

I hereby certify that this document was filed in the County Recorder's office at _____ M. on the _____ day of _____ A.D., 20____

County Recorder _____
By _____, Deputy

DOCUMENT NO. _____

Statement of Evidence:

In August of 1855, Deputy Surveyor Silos Bernord set a post to mark the North Quarter Corner of Section 33, Township 39 North, Range 23 West, 4th Principal Meridian.
No reference ties were taken.

1898±- Surveyor T.B. Vickery filed a survey of Section 28 in Book A of Surveys, P.230 on file at the Kanabec County Highway Department. Vickery measured a distance of 81.52 chains along the south line of Section 28. He does not state what type of monument was found or set at the South Quarter corner of Section 28.

1903- Surveyor John Nelson filed a survey of Section 28 in Book 2 of 2 of Surveys, P.24 on file at the Kanabec County Highway Department. Nelson set a sandstone monument at the South Quarter corner of Section 28 and measured a distance of 40.86 chains to the Southwest corner and 40.86 chains to the Southeast corner of Section 28. He also set sandstone monuments along the North-South Quarter line of Section 28.

1937- County Engineer Frank Turnacliff made a highway survey along the north line of Section 33. Turnacliff's transit ties for the County Road show a stationing dimension of 5398.4 feet along the north line of Section 33, but no information at the North Quarter corner of Section 33.

1963- Kanabec County Highway plans show a stationing dimension of 5402.1 feet along the north line of Section 33, but no information to the North Quarter corner of Section 33.

On 8-01-2019, the Kanabec County Highway Department made an excavation search with a backhoe at the centerline of the County Highway and halfway between the Northeast and Southeast corners of Section 33. The excavation was 8' x 12' x 6' deep. No evidence of the corner was found in the excavation. There are no occupation lines directly north or south of this corner, as it is swamp on both sides of the County Highway.

In September 2022, I made a survey in Section 21, Township 39 North, Range 23 West, 4th Principal Meridian for Pheasants Forever to locate existing monuments, lines of occupation and establish search areas.

On 9/22/2022 I made a search for John Nelson's stone monuments along the north-south quarter line of Section 28. I found an 8" x 8" Sandstone with "+" mark near the northeast corner of the SE 1/4 of NW 1/4 of Section 28. I computed a lost position for the North Quarter corner of Section 33, on-line and halfway between the Northeast and Northwest corners of Section 33. The computed lost location fit Nelson's distance to the found stone monument within 5 feet. I accepted the computed lost position as the best available evidence of the original corner monument and set a large Mag Spike in the new blacktop surface.



Kroschel Land Surveyors, Inc.

1639 Main Street North, Suite 6, Pine City, MN 55063
Phone: 320-629-3267 Fax: 320-629-0176