

# CERTIFICATE OF LOCATION OF GOVERNMENT CORNER

NORTHEAST Corner of Section 9, Township 39, Range 23, 4TH P.M.

STATE OF MINNESOTA, County of KANABEC

At the corner location shown on the sketch:  
On 10/23/2002 Set a KANABEC COUNTY MONUMENT.

Kanabec County U.S. Survey Feet Coordinates  
NAD 1983, HARN 1996 Adjustment  
Obtained by RTK GPS Observation

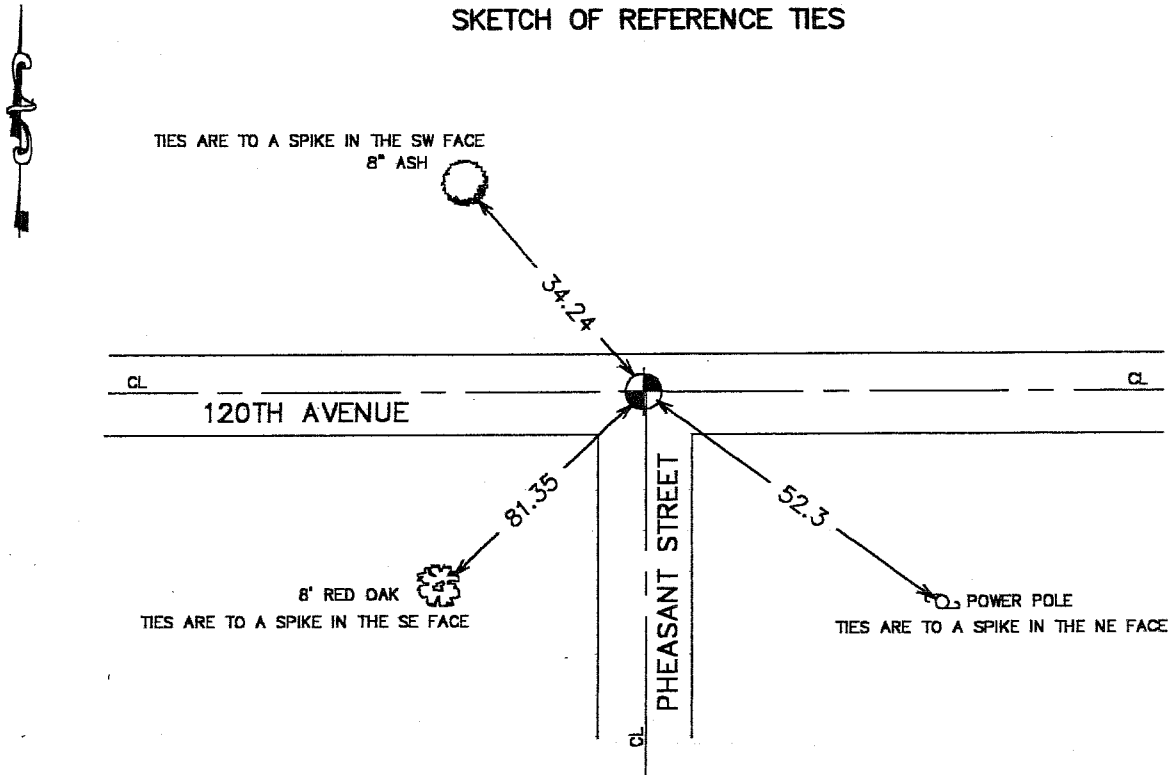
Northing= 158455.778

Easting= 422480.053

Note: NAD 1983, HARN 1996 Adjustment  
coordinates are NOT compatible with  
NAD 1983 coordinates

Note: 1 Meter=3937/1200 U.S. Survey Feet

## SKETCH OF REFERENCE TIES



Statement of evidence relative to this corner location is on back of page.

I hereby certify that this document and the data contained herein was prepared by me or under my direct supervision.

Ernest Rud  
Signature

1-21-03  
Date

Registration No. 9808

Land Surveyor,     Professional Engineer

County Surveyor,     County Engineer

### OFFICE OF THE COUNTY RECORDER

County of \_\_\_\_\_

I hereby certify that this document was filed in the County Recorder's office at \_\_\_\_\_ M. on the

\_\_\_\_\_ day of \_\_\_\_\_ A.D., 20\_\_

County Recorder \_\_\_\_\_

BY \_\_\_\_\_ Deputy

DOCUMENT NO. \_\_\_\_\_

## STATEMENT OF EVIDENCE

Original corner was set in September 1855 by Silas Barnard. Original bearing no longer remain.

John Nelson did a road survey along north line of Section 9 in December 1901. Records do not indicate what corner was set. In 1963 Gerald Sullivan did a survey in part of Section 9 and used the centerline of a north-south road and centerline of east-west road for the Section corner.

On October 23, 2002 we excavated a 8 foot by 15 foot by 3 foot deep hole at this intersection. At 3 feet down we found a 16 inch by 12 inch granite rock with a chiseled "x". This fell on the centerline of the east-west road and approximately 3 feet west of the north-south road.

We set a Kanabec County Monument, took ties, and established Kanabec County coordinates on it.