

# CERTIFICATE OF LOCATION OF GOVERNMENT CORNER

EAST QUARTER Corner of Section 9, Township 39, Range 23, 4TH P.M.  
 STATE OF MINNESOTA, County of KANABEC

At the corner location shown on the sketch:  
 On 10/23/2002 Set a KANABEC COUNTY MONUMENT.

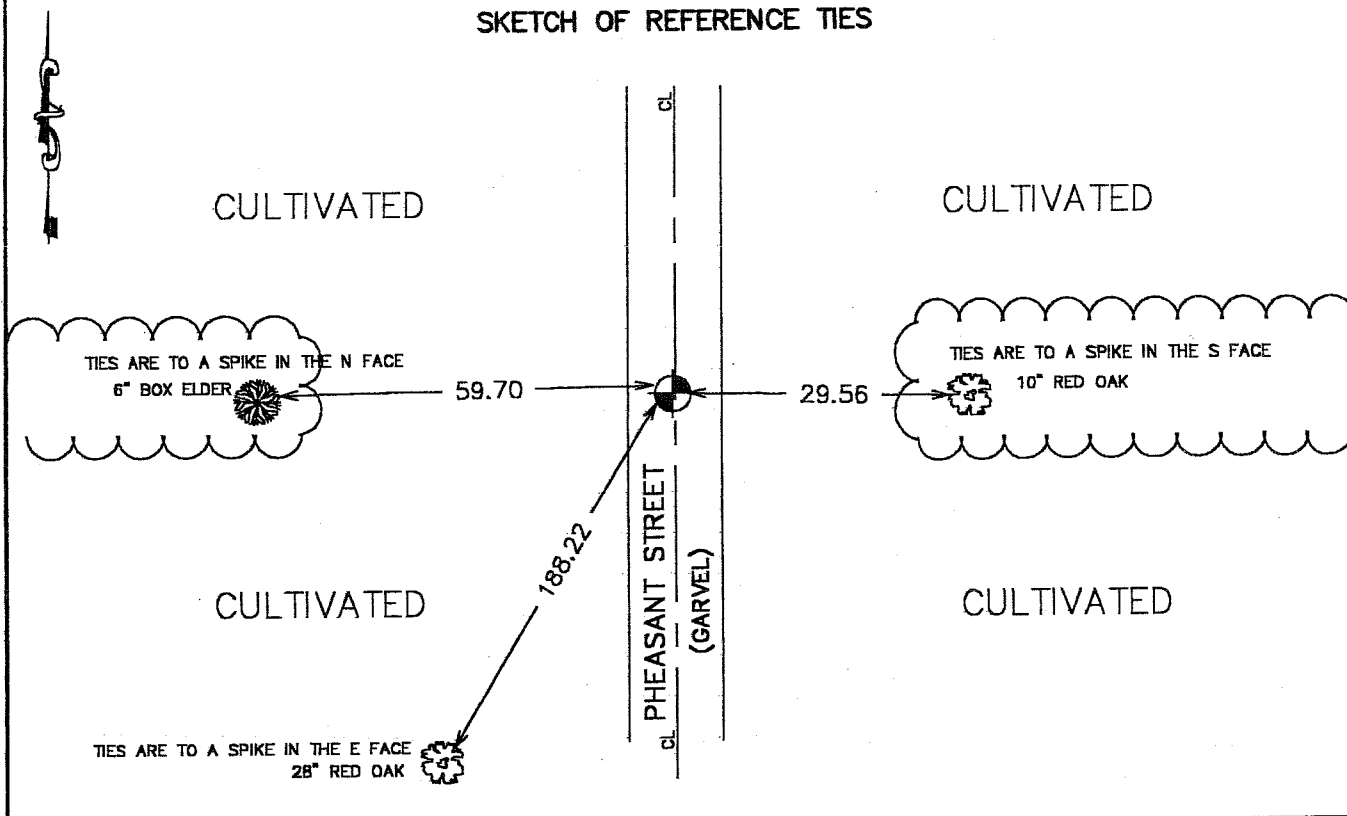
Kanabec County U.S. Survey Feet Coordinates  
 NAD 1983, HARN 1996 Adjustment  
 Obtained by RTK GPS Observation

Northing= 155787.864  
 Easting= 422364.424

Note: NAD 1983, HARN 1996 Adjustment  
 coordinates are NOT compatible with  
 NAD 1983 coordinates

Note: 1 Meter=3937/1200 U.S. Survey Feet

### SKETCH OF REFERENCE TIES



Statement of evidence relative to this corner location is on back of page.

I hereby certify that this document and the data  
 contained herein was prepared by me or under  
 my direct supervision.

Ernest J. Rud  
Signature

1-21-2003  
Date

Registration No. 9808

- Land Surveyor,     Professional Engineer  
 County Surveyor,     County Engineer

### OFFICE OF THE COUNTY RECORDER

County of \_\_\_\_\_

I hereby certify that this document was filed in  
 the County Recorder's office at \_\_\_\_\_ M. on the  
 \_\_\_\_\_ day of \_\_\_\_\_ A.D., 20\_\_\_\_

County Recorder \_\_\_\_\_  
 BY \_\_\_\_\_ Deputy

DOCUMENT NO. \_\_\_\_\_

## STATEMENT OF EVIDENCE

Original corner was set in September 1855 by Silas Barnard. Original bearing no longer remain.

John Nelson (County Surveyor) did a survey along this line in 1901 and measured 80 chains. No record of what was set for a monument. In 1963 Gerald Sullivan used the centerline of a north-south road and a fence line east-west for this Quarter corner. Sullivan measured 2665.7 from Southeast corner to East Quarter. *We measured 2664.22 feet*

On October 23, 2002 we excavated a 15 foot by 9 foot by 4 foot deep hole at the intersection of the north-south road and occupation lines east-west. No evidence of any monument in this excavation. We set a Kanabec County Monument at this location.