

CERTIFICATE OF LOCATION OF GOVERNMENT CORNER

NORTHEAST Corner of Section 16, Township 39, Range 23, 4TH P.M.
 STATE OF MINNESOTA, County of KANABEC

At the corner location shown on the sketch:
 On 10/23/2002 Set a Monument at Centerline intersection of roads.

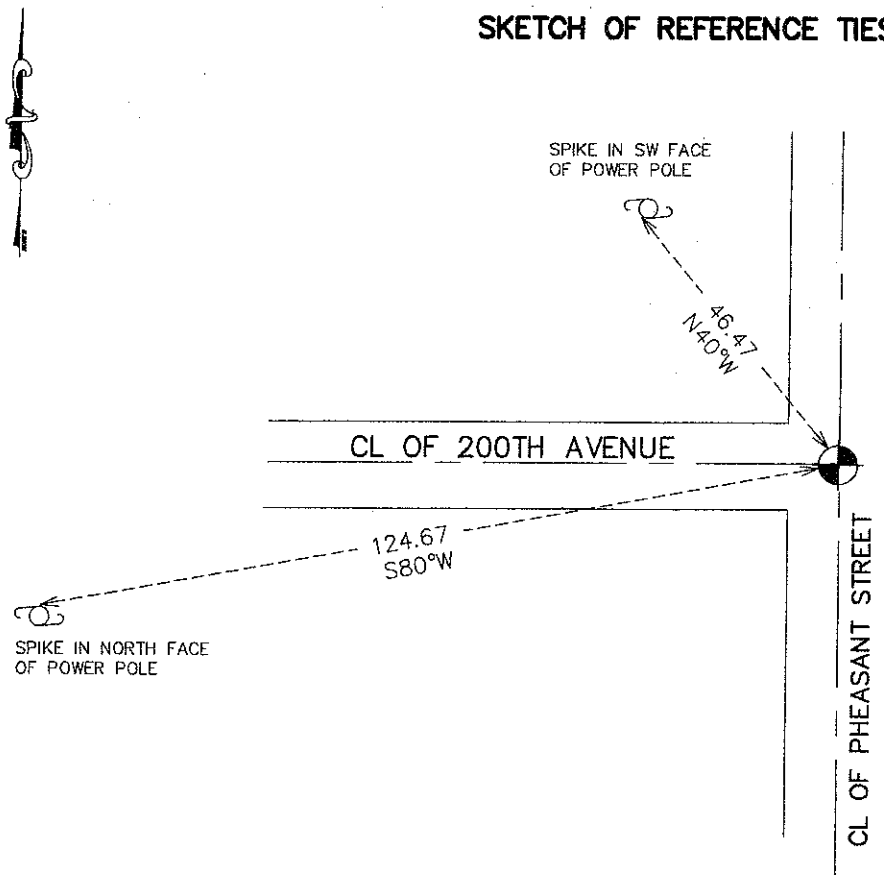
Kanabec County U.S. Survey Feet Coordinates
 NAD 1983, HARN 1996 Adjustment
 Obtained by RTK GPS Observation

Northing= 153125.214
 Easting= 422272.913

Note: NAD 1983, HARN 1996 Adjustment
 coordinates are NOT compatible with
 NAD 1983 coordinates

Note: 1 Meter=3937/1200 U.S. Survey Feet

SKETCH OF REFERENCE TIES



Statement of evidence relative to this corner location is on back of page.

I hereby certify that this document and the data contained herein was prepared by me or under my direct supervision.

Ernest J. Reed 12-21-2011
 Signature Date

Registration No. 9808

Land Surveyor, Professional Engineer

County Surveyor, County Engineer

OFFICE OF THE COUNTY RECORDER

County of _____

I hereby certify that this document was filed in the County Recorder's office at _____ M. on the _____ day of _____ A.D., 20 _____

County Recorder _____

BY _____ Deputy

DOCUMENT NO. _____

NE CORNER, SEC. 16, T39, R23

STATEMENT OF EVIDENCE

ORIGINAL CORNER WAS SET IN SEPTEMBER 1855 BY SILAS BARNARD. ORIGINAL BEARING TREES NO LONGER REMAIN.

JOHN NELSON DID A ROAD SURVEY BETWEEN SECTION'S 9 AND 10 IN DECEMBER 1901. RECORDS DO NOT INDICATE WHAT CORNER WAS SET. IN 1963 GERALD SULLIVAN DID A SURVEY IN PART OF SECTION 9 AND USED THE CENTERLINE OF A NORTH-SOUTH ROAD AND CENTERLINE OF EAST-WEST ROAD FOR THE SECTION CORNER.

ON OCTOBER 23, 2002 WE EXCAVATED A 10 FOOT BY 15 FOOT BY 3 FOOT DEEP HOLE AT THIS LOCATION. AT 16 INCHES DOWN WE FOUND A GREEN STONE WITH A DRILL HOLE ON TOP. WE EXCAVATED TO THE OLD CORDOROUY ROAD AND DID NOT FIND ANY FURTHER EVIDENCE. WE SET A MONUMENT AT THE STONE LOCATION AND ACCEPTED THIS AS THE PERPETUATED LOCATION. THE DISTANCE TO THE EAST QUARTER CORNER AGREES WITHIN 1.5 FEET OF WHAT GERALD SULLIVAN MEASURED.

WE ESTABLISHED KANABEC COUNTY COORDINATES ON THIS MONUMENT.

ON NOVEMBER 14, 2011 E.G. RUD AND SONS VERIFIED POSITION OF MONUMENT AND TOOK NEW TIES.