

CERTIFICATE OF LOCATION OF GOVERNMENT CORNER

EAST QUARTER Corner of Section 16, Township 39, Range 23, 4TH P.M.

STATE OF MINNESOTA, County of KANABEC

At the corner location shown on the sketch:
ON NOV. 14, 2011 SET A KANABEC COUNTY MONUMENT.

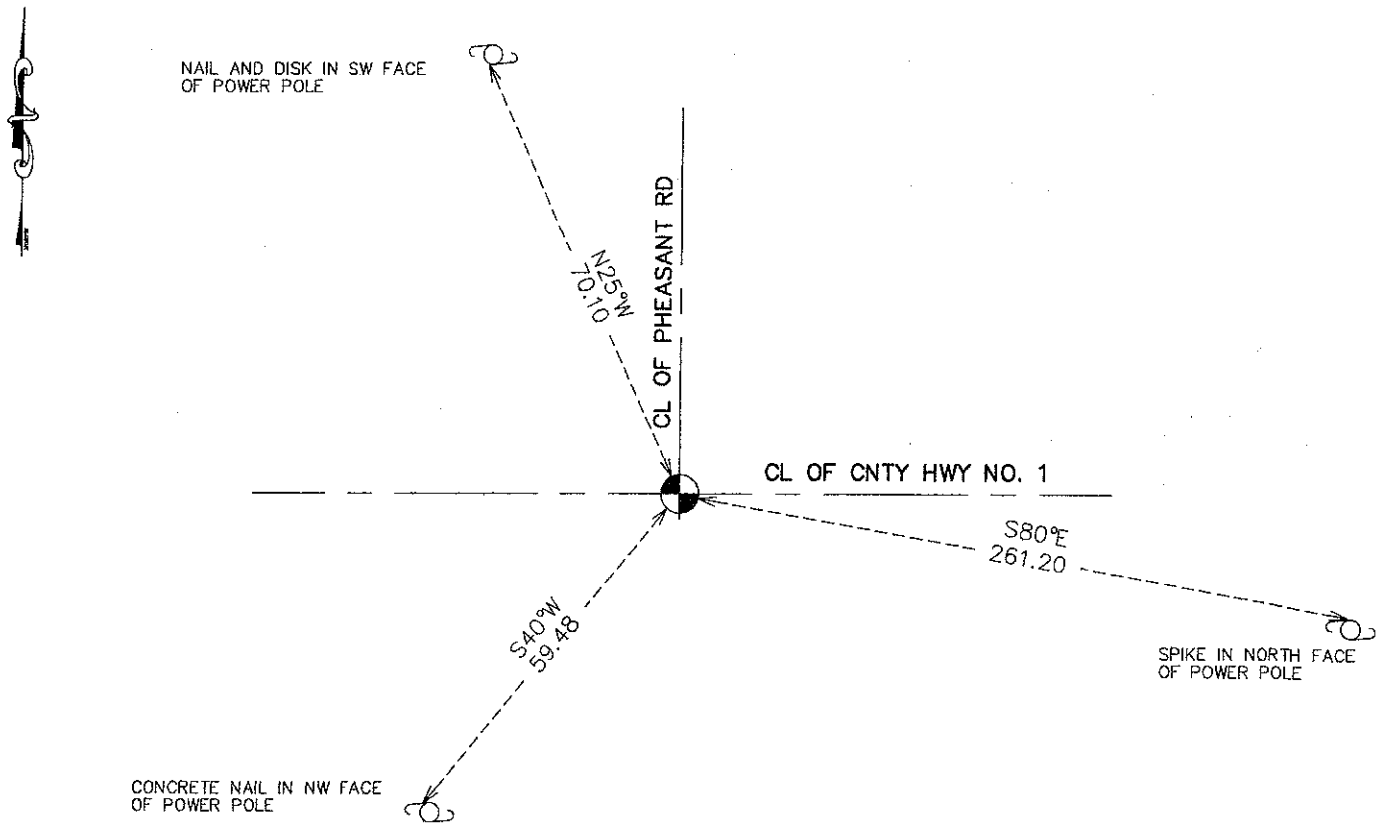
Kanabec County U.S. Survey Feet Coordinates
NAD 1983, HARN 1996 Adjustment
Obtained by RTK GPS Observation

Northing= 150501.646

Easting= 422299.494

Note: NAD 1983, HARN 1996 Adjustment
coordinates are NOT compatible with
NAD 1983 coordinates.
Note: 1 Meter=3937/1200 U.S. Survey Feet

SKETCH OF REFERENCE TIES



Statement of evidence relative to this corner location is on back of page.

I hereby certify that this document and the data contained herein was prepared by me or under my direct supervision.

Ernst J. Rud
Signature

12-21-2011
Date

Registration No. 9808

Land Surveyor, Professional Engineer

County Surveyor, County Engineer

OFFICE OF THE COUNTY RECORDER

County of _____

I hereby certify that this document was filed in the County Recorder's office at _____ M. on the _____ day of _____ A.D., 20 _____

County Recorder _____

BY _____ Deputy

DOCUMENT NO. _____

E 1/4 CORNER, SEC. 16, T39, R23

STATEMENT OF EVIDENCE

ALL OF THE ORIGINAL BEARING TREES ARE NOW GONE.

IN 1903, FORMER COUNTY SURVEYOR, JOHN NELSON, MADE A SURVEY OF THE EAST LINE OF SEC. 16 AND PLACES A BIG SANDSTONE WITH A "+" CUT IN IT. IN 1973, M.B. RUDE FOUND A SPIKE 0.20 FEET BELOW THE SURFACE AND SET A KANABEC COUNTY MONUMENT AND FILED A CORNER CERTIFICATE FOR THIS CORNER.

IN JULY OF 1987, M.B. RUDE MADE A SURVEY ALONG THE EAST-WEST QUARTER LINE OF SEC. 16 TO LOCATE EXISTING MONUMENTS, LINES OF OCCUPATION AND TO SEARCH THE AREA.

ON JULY 28, 1987, M.B. RUDE MADE AN EXCAVATION WITH THE BACKHOE AND FOUND THE SANDSTONE MONUMENT.

ON JULY 28, 1987 M.B. RUDE SET A 7/8" BY 24" CAPPED REBAR OVER THE SANDSTONE TO PERPETUATE THIS CORNER LOCATION. THIS LOCATION IS 1.48 FEET NORTH AND 2.26 FEET WEST OF THE CORNER SET IN 1973. THE CORNER SET IN 1973 WAS REMOVED.

ON NOVEMBER 14, 2011 E.G. RUD AND SONS RESET THIS CORNER WITH THE REMAINING TIE AND KANACEC COUNTY COORDINATES OBTAINED EARLIER. THE CORNER HAD BEEN REMOVED DURING MILLING AND OVERLAY OF COUNTY ROAD NO. 1. NEW TIES WERE TAKEN.