

CERTIFICATE OF LOCATION OF GOVERNMENT CORNER

North Quarter Corner of Section 22, Township 39 North, Range 23 West,
4th Principal Meridian, Kanabec County, State of Minnesota

At the corner location shown on the sketch:
On 10/08/2015 found a Cast Aluminum Monument per previous corner tie sheet.
On 08/26/2016 set a 7/8" x 20" Rebar with Aluminum Cap in its place.

Kanabec County U.S. Survey Feet Coordinates
NAD 1983, HARN 1996 Adjustment
Obtained by RTK GPS observation
Northing: 147811.0962
Easting: 424994.0606

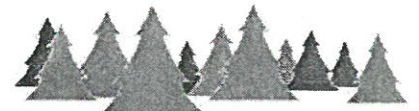
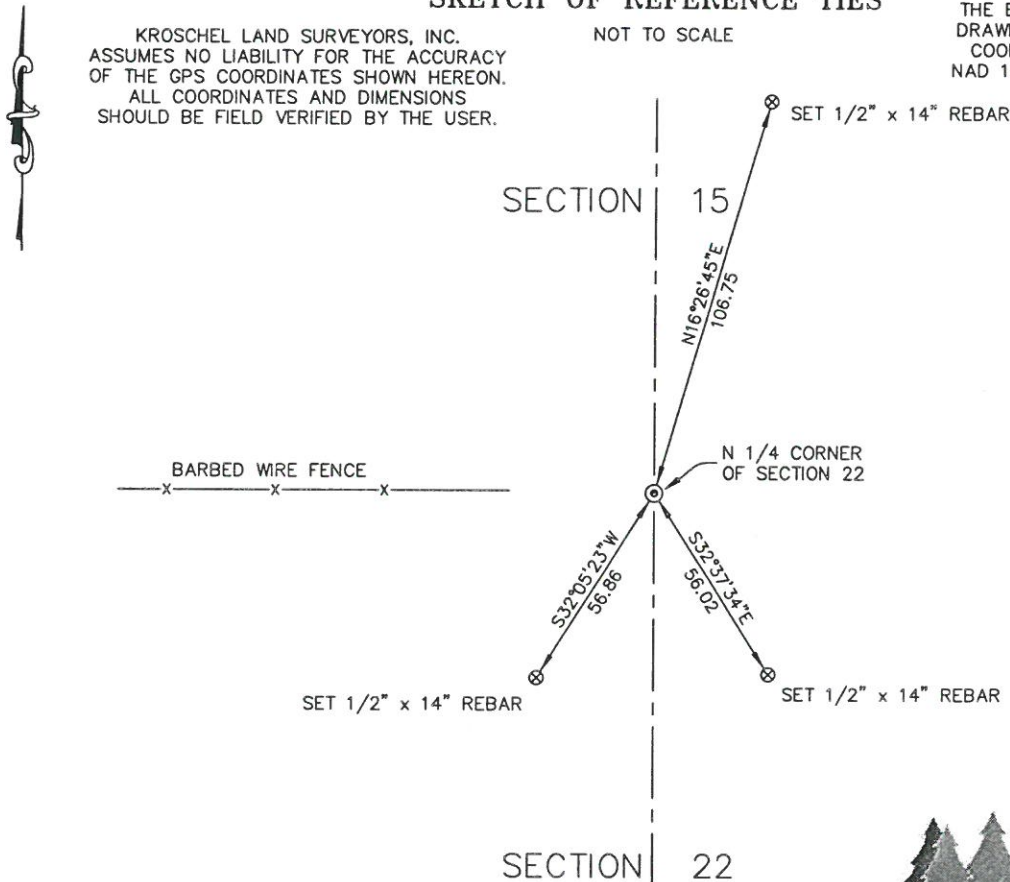
Note: 1 Meter = 3937/1200 U.S. Survey Feet

SKETCH OF REFERENCE TIES

KROSCHEL LAND SURVEYORS, INC.
ASSUMES NO LIABILITY FOR THE ACCURACY
OF THE GPS COORDINATES SHOWN HEREON.
ALL COORDINATES AND DIMENSIONS
SHOULD BE FIELD VERIFIED BY THE USER.

NOT TO SCALE

THE BASIS OF BEARINGS FOR THIS
DRAWING IS THE KANABEC COUNTY
COORDINATE SYSTEM BY MNDOT,
NAD 1983, HARN 1996 ADJUSTMENT



Kroschel Land Surveyors, Inc.

1639 Main Street North, Suite 6, Pine City, MN 55063
Phone: 320-629-3267 Fax: 320-629-0176

Statement of evidence relative to this corner location is on back of page.

I hereby certify that this survey, plan, or report was prepared by me or under my direct supervision, that the United States public land survey monument record is correct and complete to the best of my knowledge and belief, and that I am a duly Licensed Land Surveyor under the laws of the State of Minnesota.

Tyler J. Kroschel

9-26-2016
Date

License No. 44490

Land Surveyor County Surveyor

OFFICE OF THE COUNTY RECORDER
County of Kanabec

I hereby certify that this document was filed in the County Recorder's office at _____ .M. on the _____ day of _____ A.D., 20____
County Recorder _____

By _____, Deputy

DOCUMENT NO. _____

Statement of Evidence:

In August of 1855, Deputy Surveyor Silas Bernard set a post to mark the North Quarter Corner of Section 22, Township 39 North, Range 23 West, 4th Principal Meridian.

Reference ties were taken to:

10 inch Sugar at South 50 degrees West a distance of 25 links

10 inch Lind at North 47 degrees East a distance of 32 links

All of the original Government corner evidence was searched for. None was found.

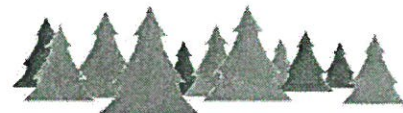
1892- A Township Supervisor's Road Order was filed in the Office of the County Auditor opening a road along the north-south quarter line of Sections 15 and 22. Attached to the road order is a survey signed by M.M.D. Nelson. He shows a distance of 40 chains north and south to the centers of Sections 15 and 22. He does not state what was found or set at the North Quarter corner of Section 22.

1973- County Surveyor M. B. Rude filed a Certificate for the South Quarter corner of Section 15. Rude states that he set a Kanabec County Monument at the intersection of the road and fence lines east and west. All of Rude's ties are now gone.

In October of 2015, I made a survey around Section 22, Township 39 North, Range 23 West, 4th Principal Meridian for Bob Walker to locate existing monuments, lines of occupation and establish search areas.

On 10/08/2015, a search was made by checking with a magnetic locator and digging with a shovel. I found a Cast Aluminum monument that was beginning to deteriorate approximately 2 feet below the road surface. We made a 15' x 15' x 4' deep excavation with a bobcat centered on the found Cast Aluminum monument. No additional evidence was found in the excavation.

On 08/26/2016 I reset a 7/8" x 20" rebar with Aluminum Cap in place of the found Cast Aluminum monument. This location was determined to be the best available evidence of the original corner location. Established reference ties and assigned Kanabec County Coordinates.



Kroschel Land Surveyors, Inc.

1639 Main Street North, Suite 6, Pine City, MN 55063
Phone: 320-629-3267 Fax: 320-629-0176