

CERTIFICATE OF LOCATION OF GOVERNMENT CORNER

NORTHEAST Corner of Section 21, Township 39, Range 23, 4TH P.M.

STATE OF MINNESOTA, County of KANABEC

At the corner location shown on the sketch:
SANDSTONE WITH CHISELED "X" ON TOP.

Kanabec County U.S. Survey Feet Coordinates
NAD 1983, HARN 1996 Adjustment
Obtained by RTK GPS Observation

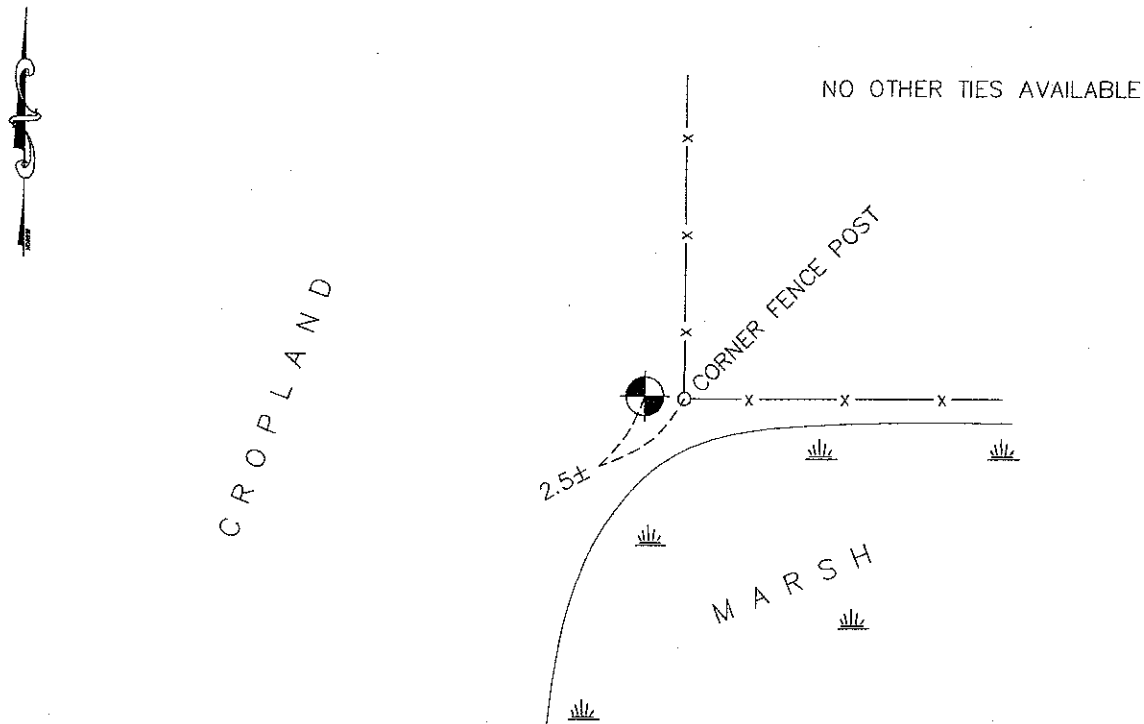
Northing= 147846.44

Easting= 422333.30

Note: NAD 1983, HARN 1996 Adjustment
coordinates are NOT compatible with
NAD 1983 coordinates

Note: 1 Meter=3937/1200 U.S. Survey Feet

SKETCH OF REFERENCE TIES



Statement of evidence relative to this corner location is on back of page.

I hereby certify that this document and the data contained herein was prepared by me or under my direct supervision.

Ernest J. Rud
Signature

12-21-2011
Date

Registration No. 9808

Land Surveyor, Professional Engineer

County Surveyor, County Engineer

OFFICE OF THE COUNTY RECORDER

County of _____

I hereby certify that this document was filed in the County Recorder's office at _____ M. on the _____ day of _____ A.D., 20 _____

County Recorder _____

BY _____ Deputy

DOCUMENT NO. _____

NE CORNER, SEC. 21, T39, R23

STATEMENT OF EVIDENCE

THE ORIGINAL GOVERNMENT CORNER WAS SET BY DEPUTY SURVEYOR SILAS BARNARD IN SEPT 1855 AND BEARING TREES NOTED AS:

8" TAMARACK @ 47 LINKS BEARING S65°W

10" TAMARACK @ 20 LINKS BEARING N68°E

THIS CORNER WAS SET ON THE EDGE OF A MARSH.

IN BOOK 2 OF 2 SURVEYS, JOHN NELSON RECORDED A SURVEY ALONG THE EAST LINE OF SEC. 16 DATED AUGUST 17, 1903. AT THAT TIME THE NE AND SE CORNERS OF SEC. 16 WERE GOOD CORNERS.

TODAY THIS CORNER FALLS AT THE EDGE OF A MARSH, WITH AN OLD FENCE LINE RUNNING EAST AND NORTH AND REMNANTS OF A FENCE RUNNING SOUTH. A 6" WOOD AT THE FENCE INTERSECTION IS 2.5 FEET EAST OF A SANDSTONE WITH A CHISELED "X" ON IT. THIS FITS THE LOCATION OF A SANDSTONE LOCATED IN 1973.

Post

NO OTHER TIES WERE AVAILABLE, BUT KANABEC COUNTY COORDINATES WERE ESTABLISHED ON THIS POSITION.