

CERTIFICATE OF LOCATION OF GOVERNMENT CORNER

N¹/₄ Corner of Section 34, Township 39, Range 23, 4TH P.M.

STATE OF MINNESOTA, County of KANABEC

At the corner location shown on the sketch:

found 1/2" iron

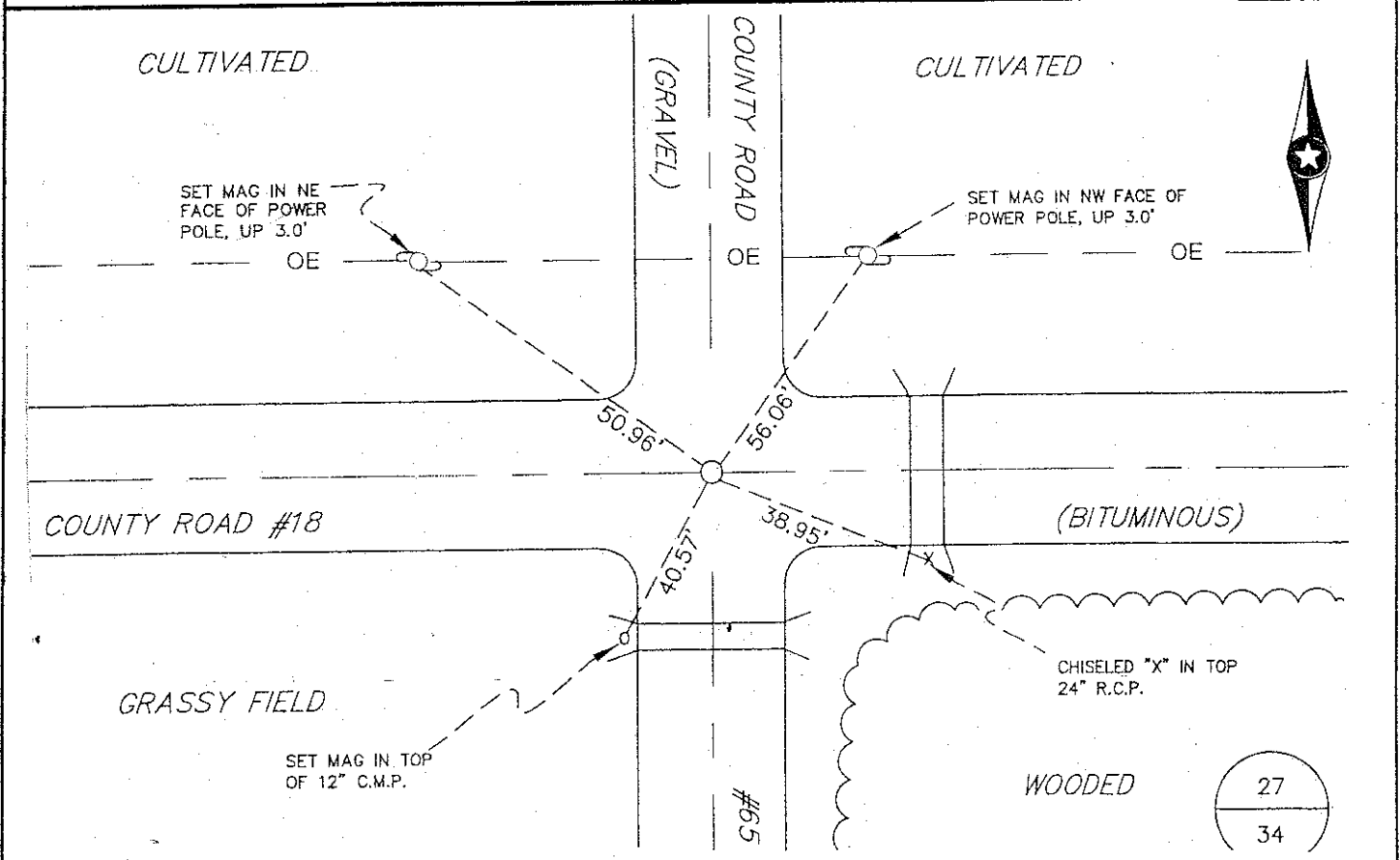
Kanabec County U.S. Survey Feet Coordinates
NAD 1983, HARN 1996 Adjustment
Obtained by RTK GPS Observation

Northing= 137210.67

Easting= 425111.16

Note: NAD 1983, HARN 1996 Adjustment coordinates are NOT compatible with NAD 1983 coordinates

Note: 1 Meter=3937/1200 U.S. Survey Feet



Statement of evidence relative to this corner location is on back of page.

I hereby certify that this document and the data contained herein was prepared by me or under my direct supervision.

Ernest J. Rud 11-12-12
Signature Date

Registration No. Minn No. 9808

- Land Surveyor, Professional Engineer
 County Surveyor, County Engineer

OFFICE OF THE COUNTY RECORDER

County of _____

I hereby certify that this document was filed in the County Recorder's office at _____ M. on the _____ day of _____ A.D., 20____

County Recorder _____

BY _____ Deputy

DOCUMENT NO. _____

STATEMENT OF EVIDENCE: NORTH ¼ 34-39-23 3923083

North Quarter corner of Section 34, Township 39 North, Range 23, West, 4th Principal Meridian, Comfort Township, Kanabec County, Minnesota.

During G.L.O. survey, a wood post was set to mark the corner and bearing trees were recorded as follows:

8" Elm	South 42 degrees East	100 links
20" Pine	North 85 degrees West	275 links

No trace of the original government corner or its accessories remain.

From records for County Road #65 obtained from the Kanabec County Highway Department (date unknown), prior to the survey indicated an assumed position for the North Quarter Corner of Section 27 on the centerline of County Road #65 and a township road heading west. Stationing on these notes indicate that said corner is 5308.9 feet south of the assumed North Quarter corner. The notes also list a distance of 2647.5 feet from said corner to an iron bar placed at the approximate location of the center of the section (not certified, just used for road stationing and alignment). A sketch of said corner shows a sandstone monument with a large chiseled "X" 6 inches below the surface of the road.

In 2005, Bogart, Pederson and Associates (BPA), in a private survey in Section 27, searched the area near the corner and preliminary results produced nothing. However, with the assistance of the Kanabec County Highway Department backhoe on May 9, 2006, the sandstone monument was found 3.0 feet below the road surface and a ½ inch rebar was found above the stone and was removed during the excavation process. The stone was located and accepted as the position for said corner. A ½ inch iron pipe (R.L.S. #12236) over the stone monument at the surface of the road. Reference ties were recorded at this time.

On November 15, 2006, E.G. Rud & Sons found this iron pipe and established Kanabec County coordinates on this position.