

# CERTIFICATE OF LOCATION OF GOVERNMENT CORNER

Northeast Corner of Section 33, Township 39 North, Range 23 West,  
4th Principal Meridian, Kanabec County, State of Minnesota

At the corner location shown on the sketch:  
On 10/18/2012 found a 1.25" Iron Pin.  
  
On 2/13/2023 set a large Mag Spike in new blacktop surface in its place.

Kanabec County U.S. Survey Feet Coordinates  
NAD 1983, HARN 1996 Adjustment  
Obtained by RTK GPS observation  
Northing: 137239.8149  
Easting: 422473.1061

Note: NAD 1983, HARN 1996 Adjustment coordinates are NOT compatible with NAD 1983 coordinates  
Note: 1 Meter = 3937/1200 U.S. Survey Feet

## SKETCH OF REFERENCE TIES

KROSCHEL LAND SURVEYORS, INC.  
ASSUMES NO LIABILITY FOR THE ACCURACY OF THE GPS COORDINATES SHOWN HEREON. ALL COORDINATES AND DIMENSIONS SHOULD BE FIELD VERIFIED BY THE USER.

NOT TO SCALE

THE BASIS OF BEARINGS FOR THIS DRAWING IS THE KANABEC COUNTY COORDINATE SYSTEM BY MNDOT, NAD 1983, HARN 1996 ADJUSTMENT

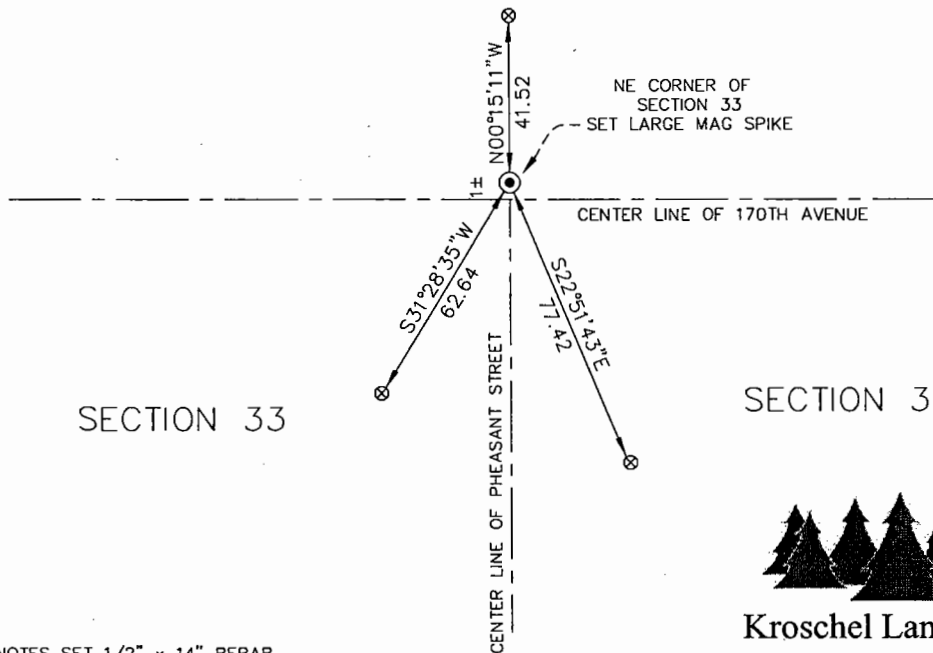


SECTION 28

SECTION 27

SECTION 33

SECTION 34



⊗ = DENOTES SET 1/2" x 14" REBAR



**Kroschel Land Surveyors, Inc.**

1639 Main Street North, Suite 6, Pine City, MN 55063  
Phone: 320-629-3267 Fax: 320-629-0176

Statement of evidence relative to this corner location is on back of page.

I hereby certify that this report was prepared by me or under my direct supervision, that the United States public land survey monument record is correct and complete to the best of my knowledge and belief, and that I am a duly Licensed Land Surveyor under the laws of the State of Minnesota.

Tyler J. Kroschel, County Surveyor

License No. 44490

2/15/2023  
Date

**OFFICE OF THE COUNTY RECORDER**  
County of Kanabec

I hereby certify that this document was filed in the County Recorder's office at \_\_\_\_\_ .M. on the \_\_\_\_\_ day of \_\_\_\_\_ A.D., 20\_\_\_\_

County Recorder \_\_\_\_\_  
By \_\_\_\_\_, Deputy

**DOCUMENT NO.** \_\_\_\_\_

Statement of Evidence:

In August of 1855, Deputy Surveyor Silas Bernard set a post to mark the Northeast Corner of Section 33, Township 39 North, Range 23 West, 4th Principal Meridian.

Reference ties were taken to:

- 12 inch Poplar at North 17 degrees East o distance of 150 links
- 10 inch Poplar at South 20 degrees East o distance of 150 links

All of the original Government corner evidence was searched for. None was found.

1898±- Surveyor T.B. Vickery filed a survey of Section 28 in Book A of Surveys, P.230 on file at the Kanabec County Highway Department. Vickery measured a distance of 81.52 chains along the south line of Section 28 and a distance of 80.64 chains along the east line of Section 28. He does not state what type of monument was found or set at the Southeast corner of Section 28.

1900- A Township Supervisor's Road Order was filed in the Office of the County Auditor opening a road along the East line of Section 28. Attached to the Road Order was a survey of the road by Surveyor T. B. Vickery. Vickery measured a distance of 80.65 chains along the east line of Section 28. He does not state what type of monument was found or set at the Southeast corner of Section 28.

1903- Surveyor John Nelson filed a survey of Section 28 in Book 2 of 2 of Surveys, P.24 on file at the Kanabec County Highway Department. Nelson set a sandstone monument at the Southeast corner of Section 28 and measured a distance of 81.72 choins along the south line of Section 28.

1903- A Township Supervisor's Road Order was filed in the Office of the County Auditor opening a rood along the East line of Section 33. Attached to the Road Order was a survey of the road by Surveyor John Nelson. Nelson measured a distance of 80.18 chains along the east line of Section 33. He does not state whot type of monument was found or set at the Northeast corner of Section 33.

1904- Surveyor John Nelson filed a survey of a road along the east line of Section 33 in Book 1 of 2 of Surveys, P.22 on file at the Kanabec County Highway Department. Nelson measured a distance of 80.18 chains along the east line of Section 33. He does not state what type of monument was found or set at the Northeast corner of Section 33.

1925- Surveyor George Jenks filed o Certificate of Public Highway Corner for the Northeast corner of Section 33. Jenks found a Stone marked "+" and made 3 new ties. I searched for these ties, but none were found.

1937- County Engineer Frank Turnacliﬀ filed a Certificate of Public Highway Corner for the Northeast corner of Section 33. Turnacliﬀ found a Stone marked "+" 1.5 feet below the road surfoce and made 4 new ties. I searched for these ties, but none were found. Turnacliﬀ's transit ties for the County Road show stationing to the corners east and west of the Northeast corner of Section 33. (Dimensions shown below)

1963- Kanabec County Highway plans show stationing distances to the east ond west of the Northeast corner of Section 33. The Highway Plans show a subcut beginning at the corner location and running east. (Dimensions shown below)

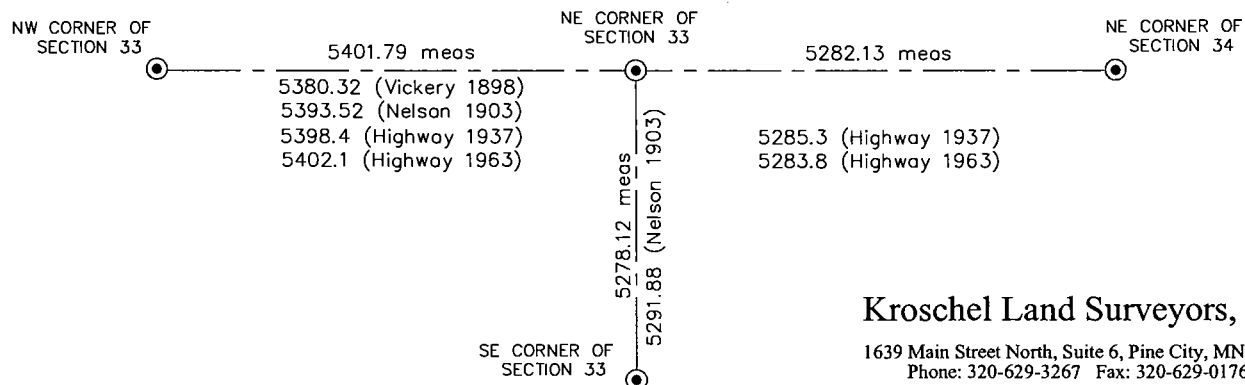
In October 2012, I made a survey in Section 34, Township 39 North, Range 23 West, 4th Principal Meridian for Christie Herschberger to locate existing monuments, lines of occupation and establish search areas.

On 10/18/2012 I made a search with a metal locator and found a 1.5" Iron Pin just below the blocktop surface of the County Highway and assigned Kanabec County coordinates. I left said Iron Pin as found. The found Iron Pin fit the County's distances from 1963 very well.

In the summer of 2019, the Kanobec County Highway Department resurfaced County Highway No. 18. The 1.5" Iron Pin was likely removed during removal of the old blocktop.

On 2/14/2023 I set a large Mag Spike in place of the found 1.5" Iron Pin in the new blacktop surface and made reference ties as shown. I accepted this location as the best available evidence of the original corner monument. No excavation search was made at this location as construction of the Highway would likely have removed any prior evidence of the corner.

SKETCH OF RECORDED DISTANCES  
(NOT TO SCALE)



**Kroschel Land Surveyors, Inc.**

1639 Main Street North, Suite 6, Pine City, MN 55063  
Phone: 320-629-3267 Fax: 320-629-0176